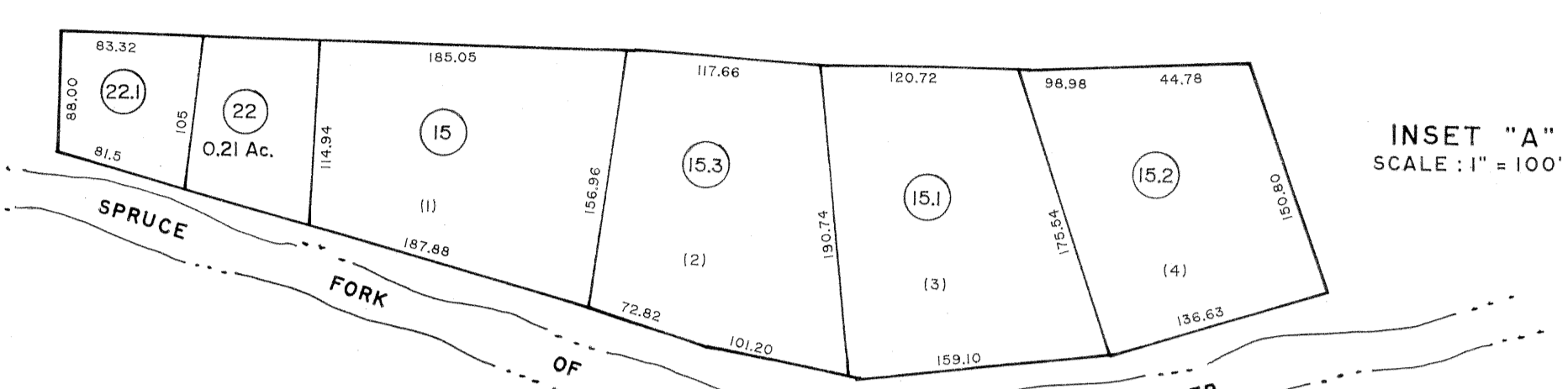
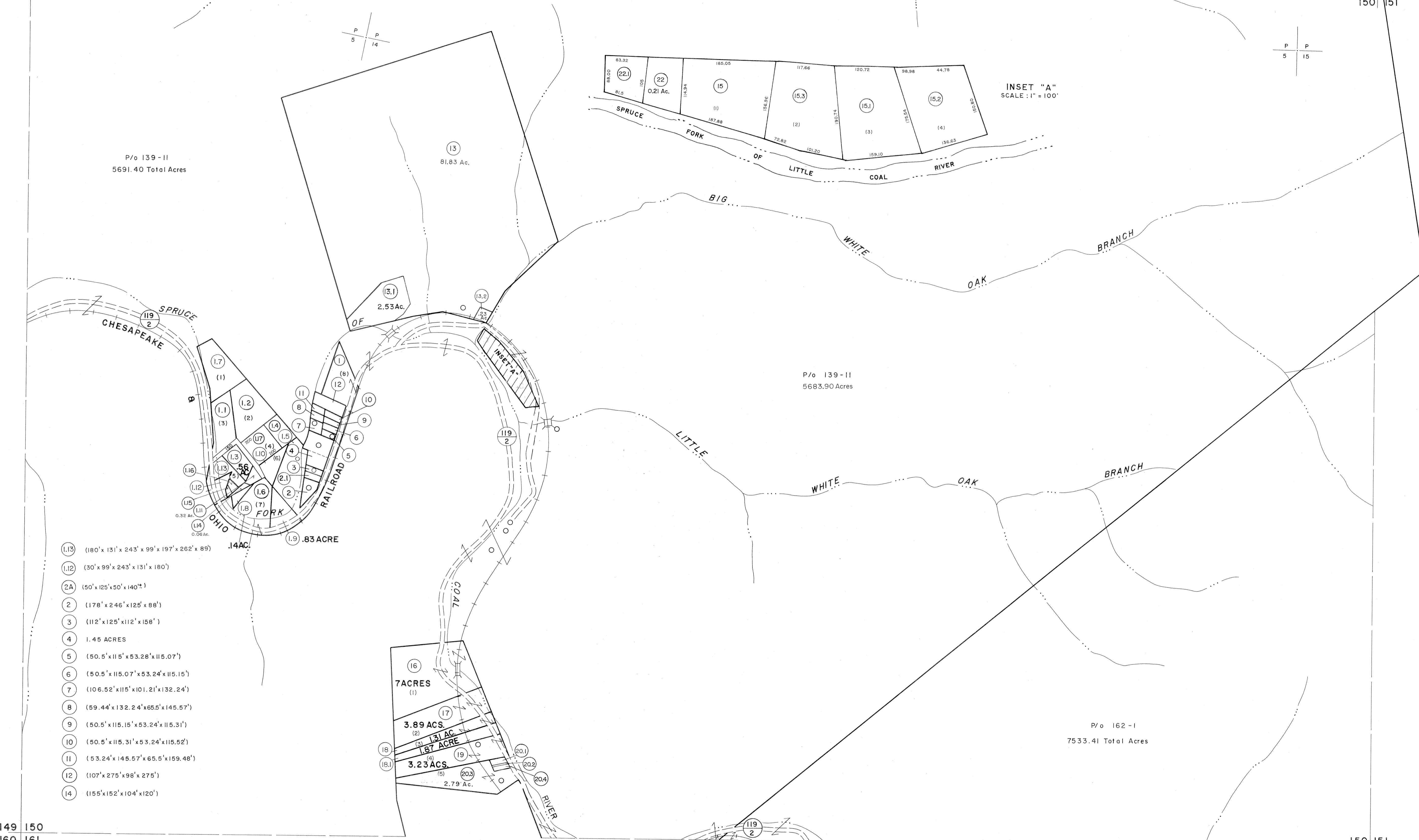


138 139  
149 150

139 140  
150 151

149 150  
160 161

150 151  
161 162



- (1.13) (180' x 131' x 243' x 99' x 197' x 262' x 89') .14AC.
- (1.12) (30' x 99' x 243' x 131' x 180')
- (2A) (50' x 125' x 50' x 140')
- (2) (178' x 246' x 125' x 88')
- (3) (112' x 125' x 112' x 158')
- (4) 1.45 ACRES
- (5) (50.5' x 115.7' x 53.28' x 115.07')
- (6) (50.5' x 115.07' x 53.24' x 115.15')
- (7) (106.52' x 115' x 101.21' x 132.24')
- (8) (59.44' x 132.24' x 65.5' x 145.57')
- (9) (50.5' x 115.15' x 53.24' x 115.31')
- (10) (50.5' x 115.31' x 53.24' x 115.52')
- (11) (53.24' x 145.57' x 65.5' x 159.48')
- (12) (107' x 275' x 98' x 275')
- (14) (155' x 152' x 104' x 120')

For Tax Purposes Only  
 Prepared by  
**MICHAEL BAKER, JR., INC.**  
 Consulting Engineers  
 Rochester, Pennsylvania

Legend	
Property line	Original lot line
Edge of pavement or roadway	Dead lot number
Corporation line	Parcel or index number
District line	Improvement
County line	Railroad

Revisions			
1	4-1-64	9	6-2-2003 JEB
2	2-2-78	10	
3	TO JULY 1981 C.P.	11	
4		12	
5	TO 7-1-86 C.P.	13	
6	REV. TO 7-1-88	14	
7	8-1-97	15	J.E.B
8	7-1-2000	16	JEB

KEY MAP

**LOGAN COUNTY**  
 STATE OF WEST VIRGINIA  
 Office of Assessor

DISTRICT  
**LOGAN**  
 SHEET NO: 150  
 Date, Aerial Photography: November, 1962 Date, Map: April, 1963  
 Photo No: Scale: 1" = 400'