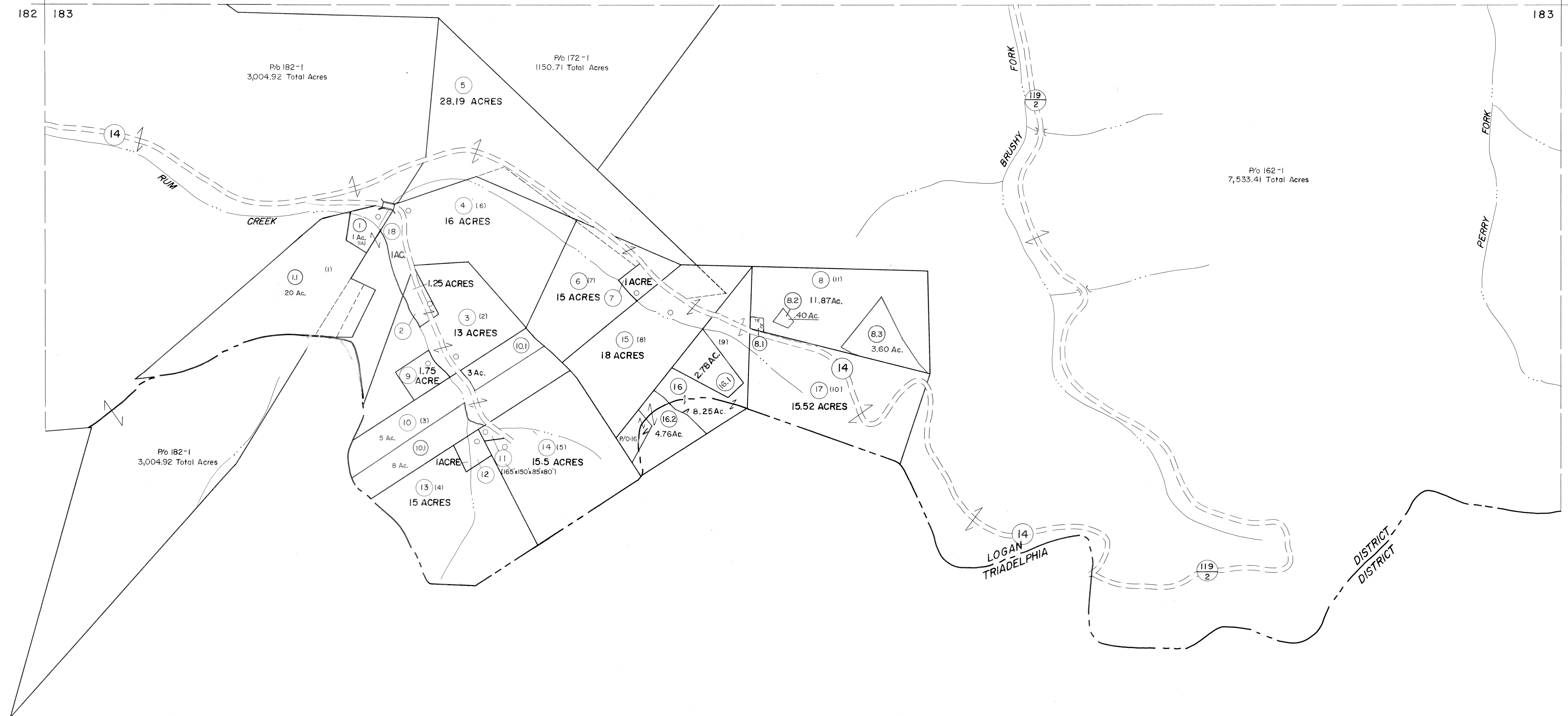


171 | 172
182 | 183

172 | 173
183 | 184



182 | 183

183 | 184

(8,3) 100' x 80' x 296' x 228.29' x 299.69' x 268.29' x 81'
 (8,2) 143.01' x 158.45' x 126.64' x 100.99'

For Tax Purposes Only

Prepared by
 MICHAEL BAKER, JR., INC.
 Consulting Engineers
 Rochester, Pennsylvania

Legend

Property line	—————	Original lot line	-----
Edge of pavement or roadway	-----	Deed lot number	(15)
Corporation line	-----	Parcel or index number	(9)
District line	-----	Improvement	o
County line	-----	Railroad	+

Revisions

1	4-1-64	9	17
2	2-2-76 BAH	10	18
3	TO JULY 1981 C.P.	11	19
4	To 7-1-86 C.P.	12	20
5	REV TO 7-1-88 NCS	13	21
6	OGIS 4/30/92 DSH	14	22
7	7-1-2000 J.E.B	15	23
8	6-2-2003 JEB	16	24

KEY MAP



LOGAN COUNTY
 STATE OF WEST VIRGINIA
 Office of Assessor

DISTRICT

LOGAN

SHEET NO: 183

Date, Aerial Photography: November, 1962 Date, Map: April, 1963
 Photo No: Scale: 1" = 400'