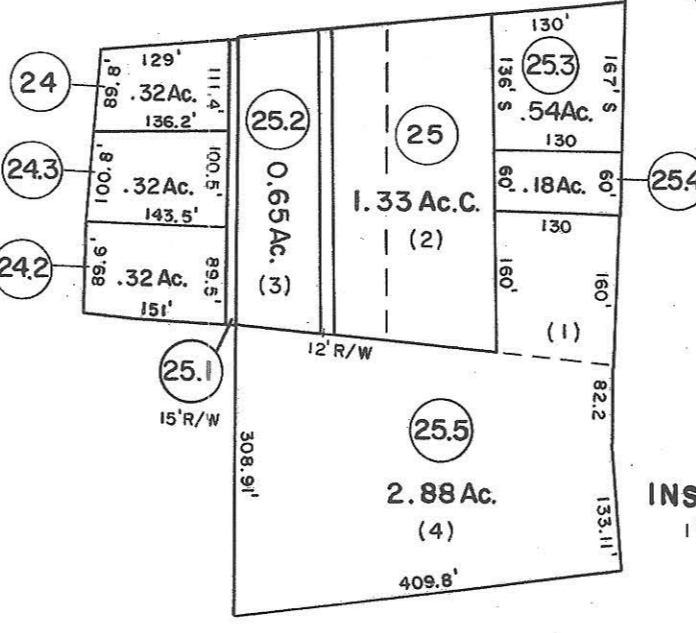
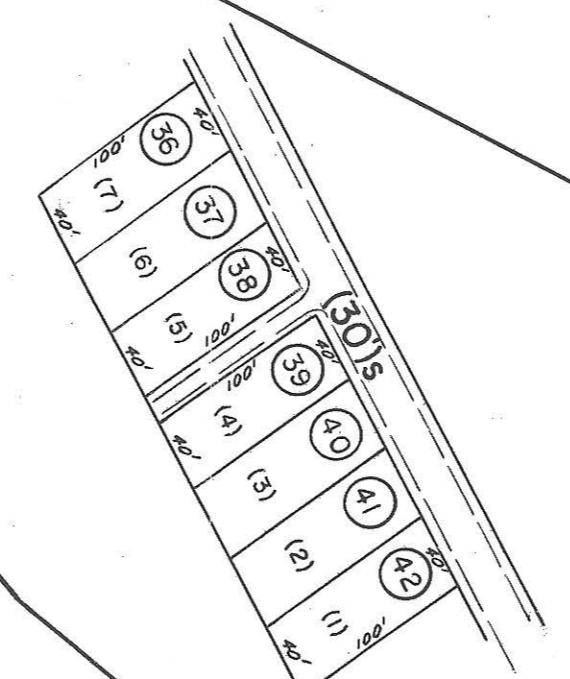
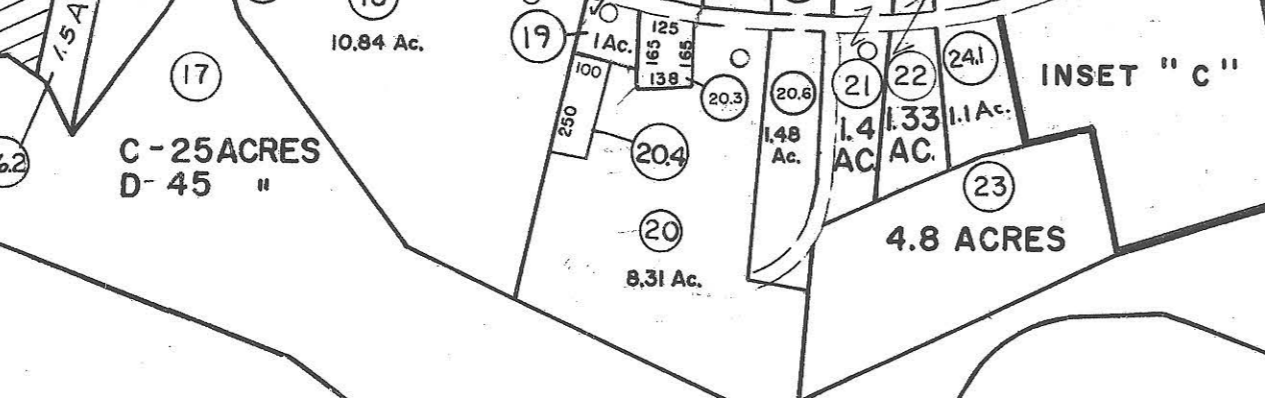
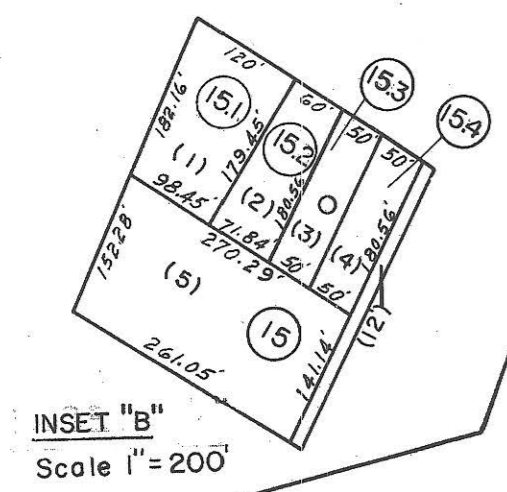
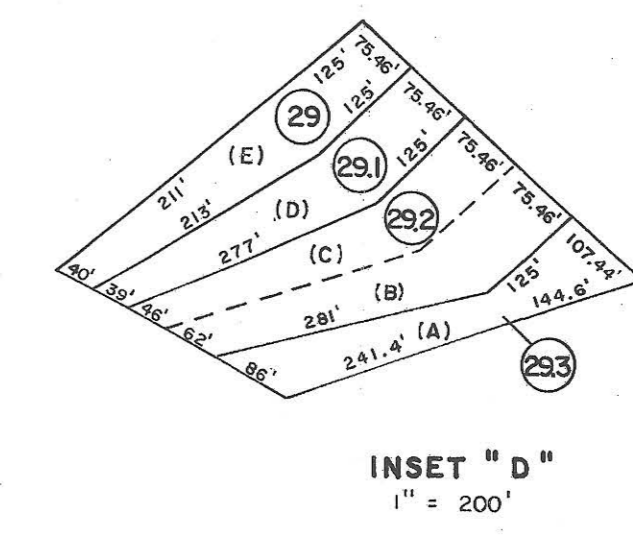
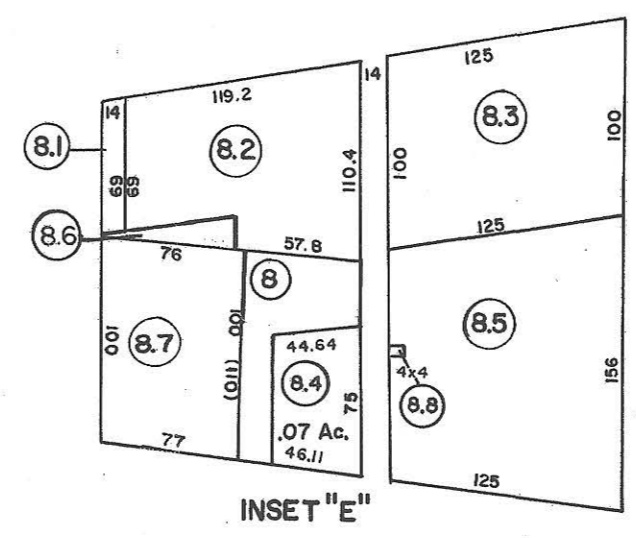


- ① 0.25 ACRE
- ④ (105'x150)
- ⑥ (175'x114'x175'x163')
- ⑦ (394.8'x164.7'x219.9'x162.7')
- ⑩ (134'x132.9'x109'x132.9')
- ⑪ (132.9'x177.5'x132.9'x165')
- ⑰ 1 ACRE
- ⑳ (125'x138'x145'x144')
- ⑳.2 (145'x138'x142'x138')
- ⑳.6 (77'x20'x76.2')



133|134  
139|140

134|135  
140|141

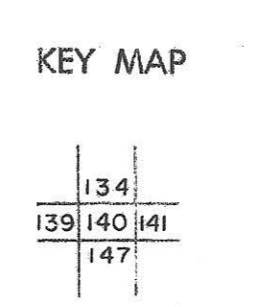
139|140  
146|147

140|141  
147|148

For Tax Purposes Only  
Prepared by  
MICHAEL BAKER, JR., INC.  
Consulting Engineers  
Rochester, Pennsylvania

Legend	
Property line	—
Edge of pavement or roadway	—
Corporation line	—
District line	—
County line	—
Original lot line	- - - - -
Deed lot number	(15)
Parcel or index number	(99)
Improvement	o
Railroad	—

Revisions			
1	4-1-64	9	7-1-2000 J.E.B.
2	1-78	10	6-2-2003 JEB
3	Amended 1982	11	11-6-08 H.S.
4	To 7-1-84 C.P.	12	2/25/15 S.B.H.
5	July, 1986	13	TRL
6	Revised 12-1-89	14	
7	OGIS 5/2/92	15	DSH
8	B-1-97	16	J.E.B.



LOGAN COUNTY  
STATE OF WEST VIRGINIA  
Office of Assessor

DISTRICT  
**TRIADDELPHIA**  
SHEET NO: 140  
Date, Aerial Photography: November 1962 Date, Map: April 1963  
Photo No: Scale: 1" = 400'