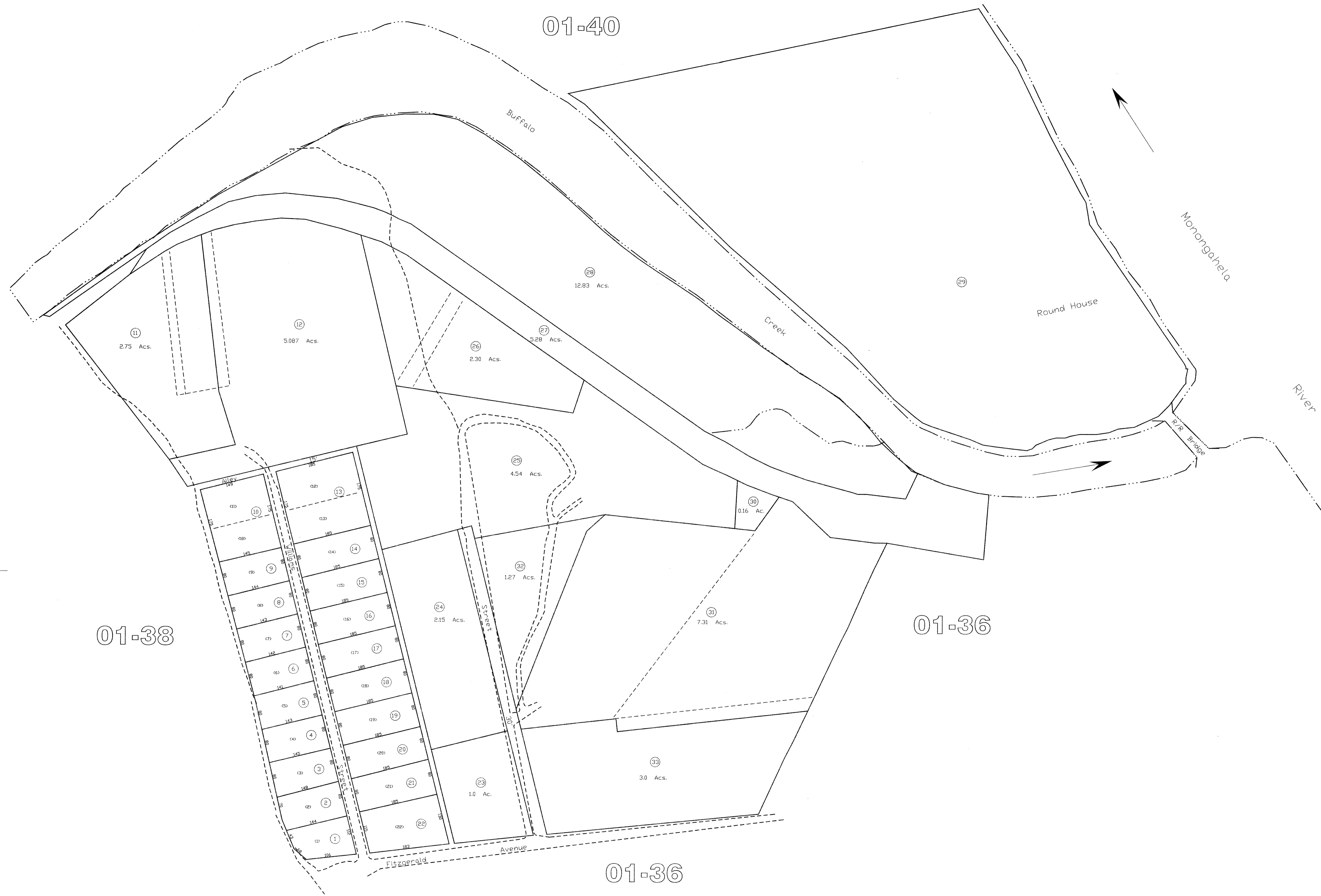


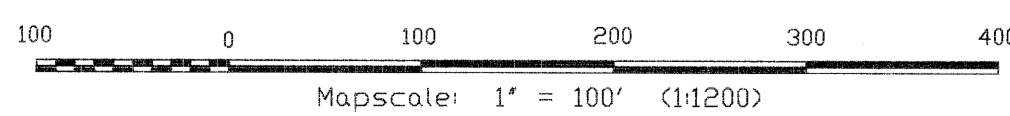
01-40



01-38

01-36

01-36



THIS DOCUMENT IS A TAX MAP: It was compiled for purposes of taxation from available record evidence and has not been field verified. It is not a valid survey plat. The existence of data on this map does not imply any "official" status to such data. The WV State Tax Dept. and the Marion County Assessor's Office assume no liability that might result from use of this document.

LEGEND	
Property Line	—————
Edge of roadway	- - - - -
Corporation Line	—————
Hydrography	~~~~~
Original Lot Line	- - - - -
Lot number	(8)
Tax Parcel Number	(9)
Railroad	+++++

**Office of the
Marion County Assessor**
James P. Priester, Assessor

Revision	History	Date
1	NEW MAP	TN MAY, 2002
2	NEW MAP	TN 2004
3		
4		
5		

All tax maps created under the provisions of reappraisal legislation are the property of the Marion County Reappraisal Program and the reproduction, copying, distribution or sale of such maps or any copies thereof without the written permission of the Marion County Assessor is prohibited by law. 03-14

Fairmont City

01-37