

02-11

02-12

02-10

02-05

02-04

02-05A

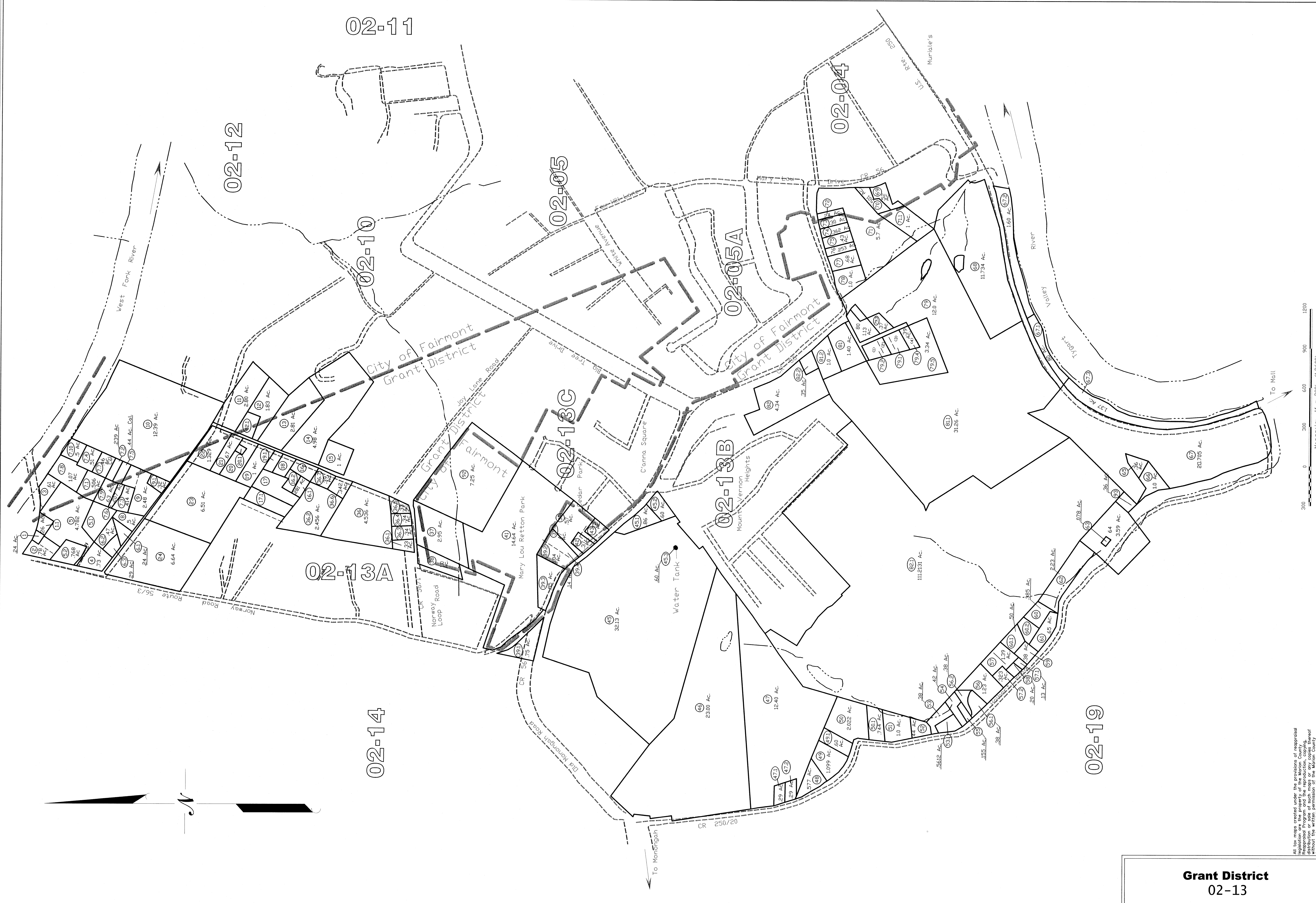
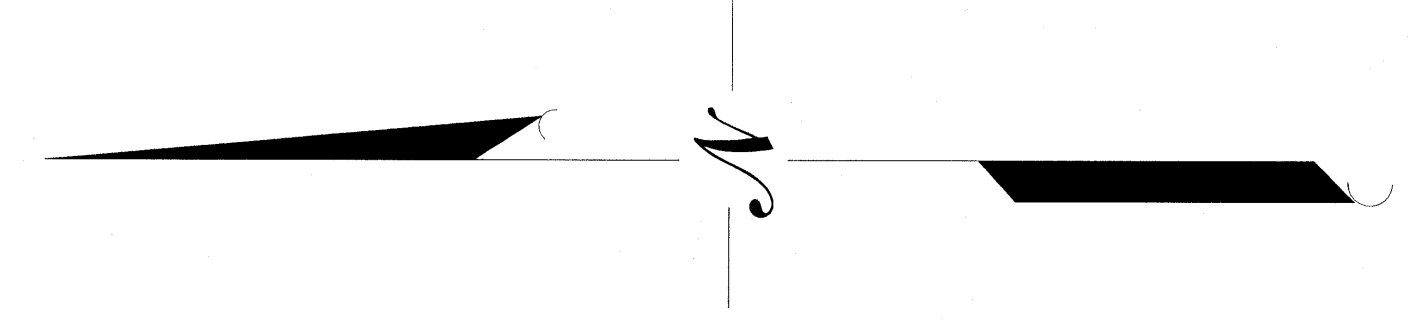
02-13C

02-13B

02-13A

02-14

02-19



All tax maps created under the provisions of reapportionment are the property of the Marion County Assessor's Office. The existence of data on this map does not imply any official distribution or sale of such maps or any copies thereof. The Assessor's Office assumes no liability that might result from use of this document.

**Grant District**  
02-13

LEGEND

- Property Line
- Easement
- Corporation Line
- Hydrography
- Original Lot Line
- Lot Number
- Tax Parcel Number
- Railroad

**Office of the**  
**Marion County Assessor**  
*James P. Presler, Assessor*

Revision	Mapper	Date
1	NEW MAP	APRIL 2002
2	NEW MAP	APRIL 2005
3	NEW MAP	JUNE 2005
4		
5		

**Grant District**  
02-13