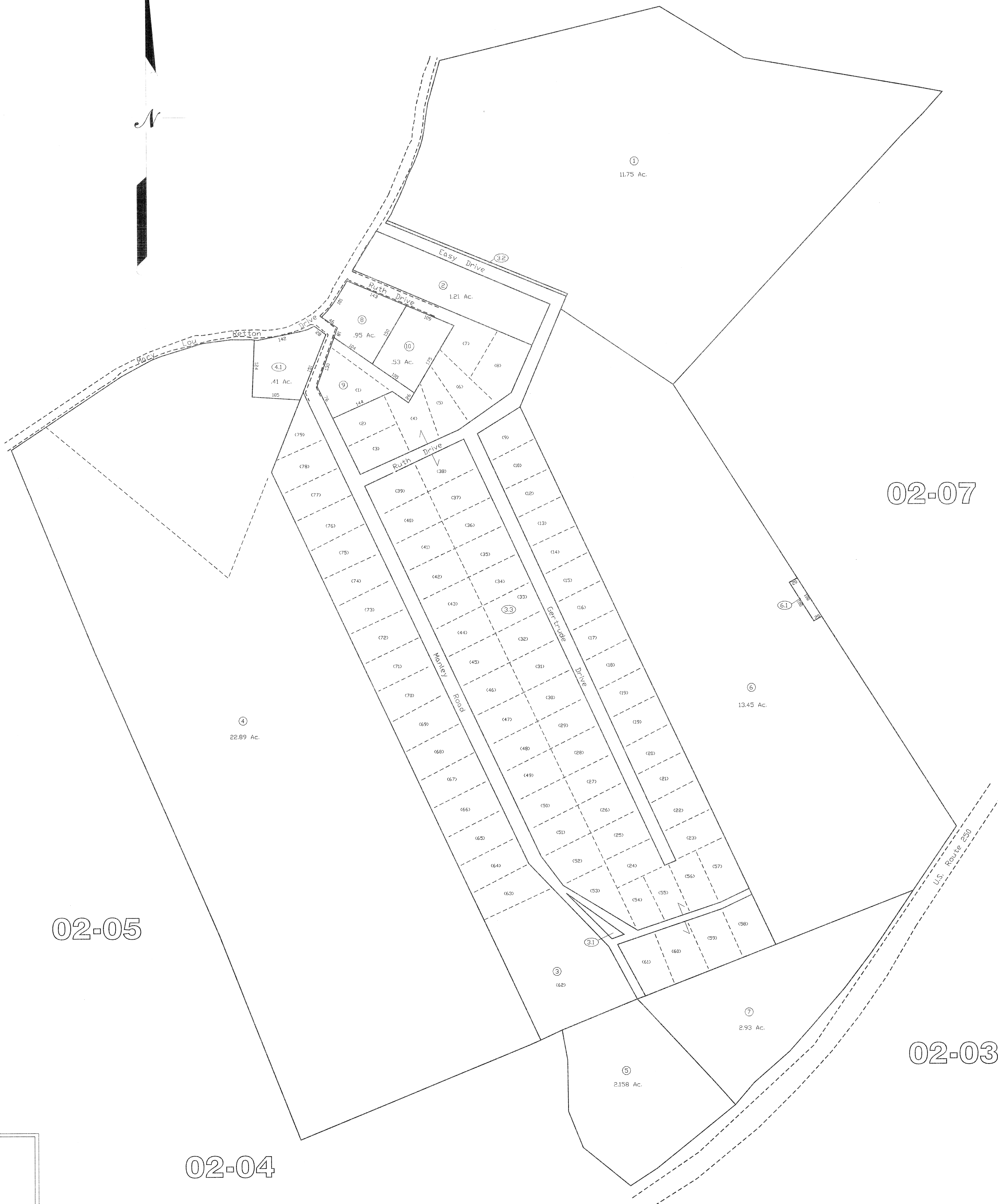
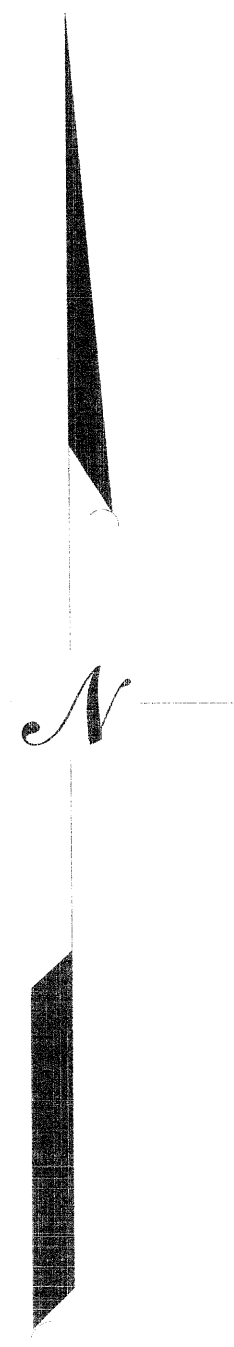


02-09



02-07

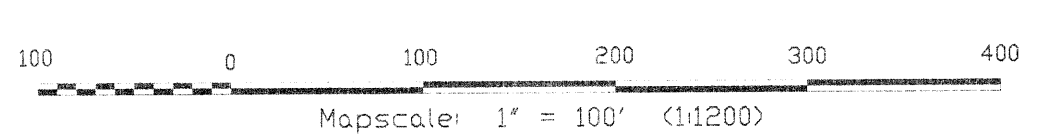
02-05

02-03

02-04

Grant Annex  
02-06

All tax maps created under the provisions of reappraisal legislation are the property of the Marion County Reappraisal Program and the reproduction, copying, distribution or sale of such maps or any copies thereof without the written permission of the Marion County Assessor is prohibited by law. 03-14



**LEGEND**

Property Line	—————	Original Lot Line	-----
Edge of roadway	-----	Lot number	(#)
Corporation Line	-----	Tax Parcel Number	17
Hydrography	~~~~~	Railroad	+++++

**Office of the  
Marion County Assessor**  
*James P. Prieder, Assessor*

Revision	Mapper	History	Date
1	NEW MAP_TN		APRIL, 2002
2	NEW MAP_JT		2004
3			
4			
5			

**Grant Annex**  
02-06