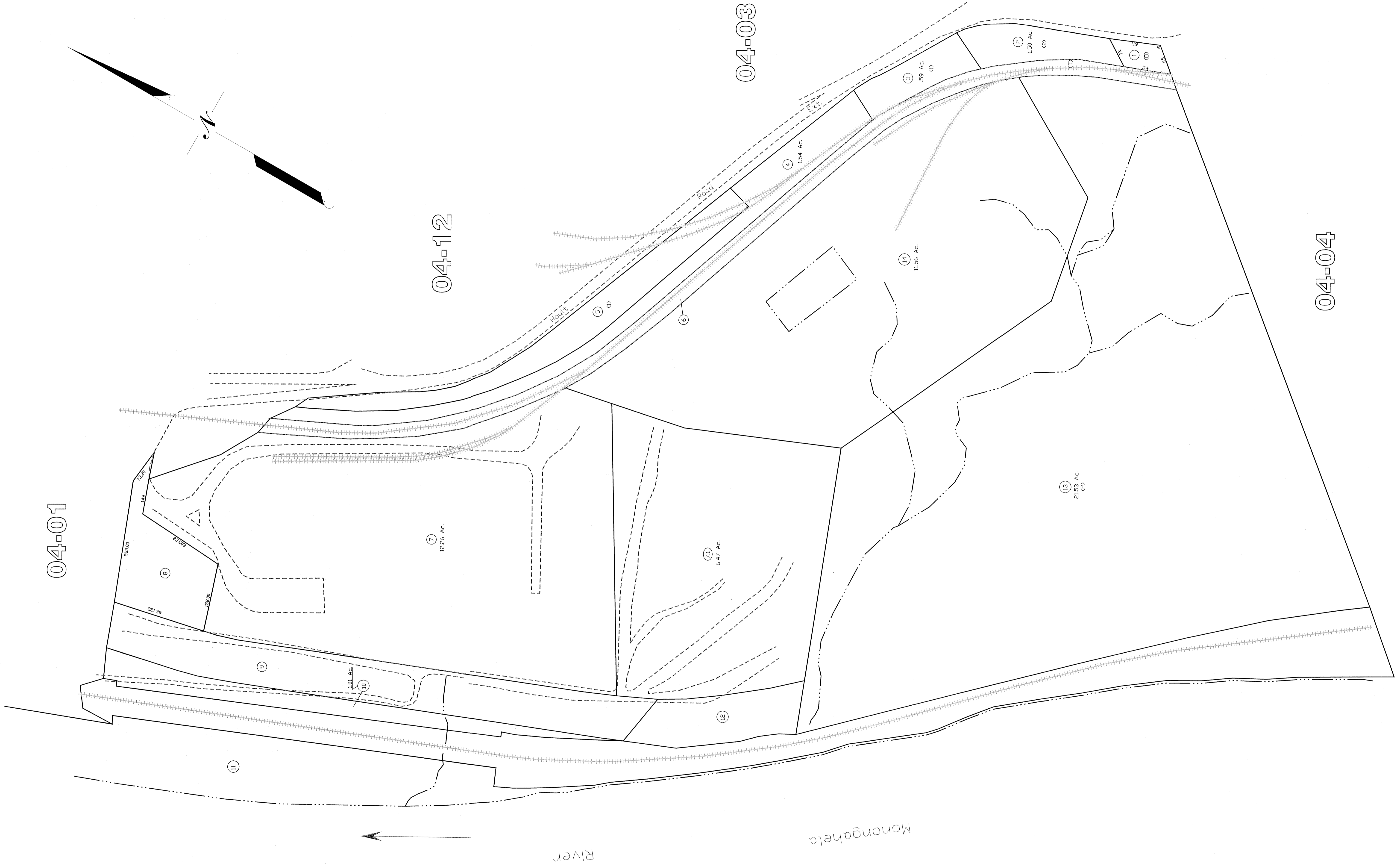


04-01

04-12

04-03

04-04



All tax maps created under the provisions of taxation from legislation are the property of the Marion County Assessor's Office. The existence of data on this map does not imply any "official" status to such data. The WV State Tax Dept. and the Marion County Assessor's Office assume no liability that might result from use of this document.

Map Scale: 1" = 100' (1:1200)

Revision	Date	History
1	NEW MAP TN	MARCH, 2002
2	NEW MAP NLK	SEPTEMBER, 2005
3		
4		
5		

LEGEND

Property Line	Original Lot Line
Edge of roadway	Lot number
Corporation Line	Tax Parcel Number
Hydrography	Railroad

Office of the Marion County Assessor
James P. Proctor, Assessor

Winfield City
04-02

Winfield City
04-02