

Match Line
A-A

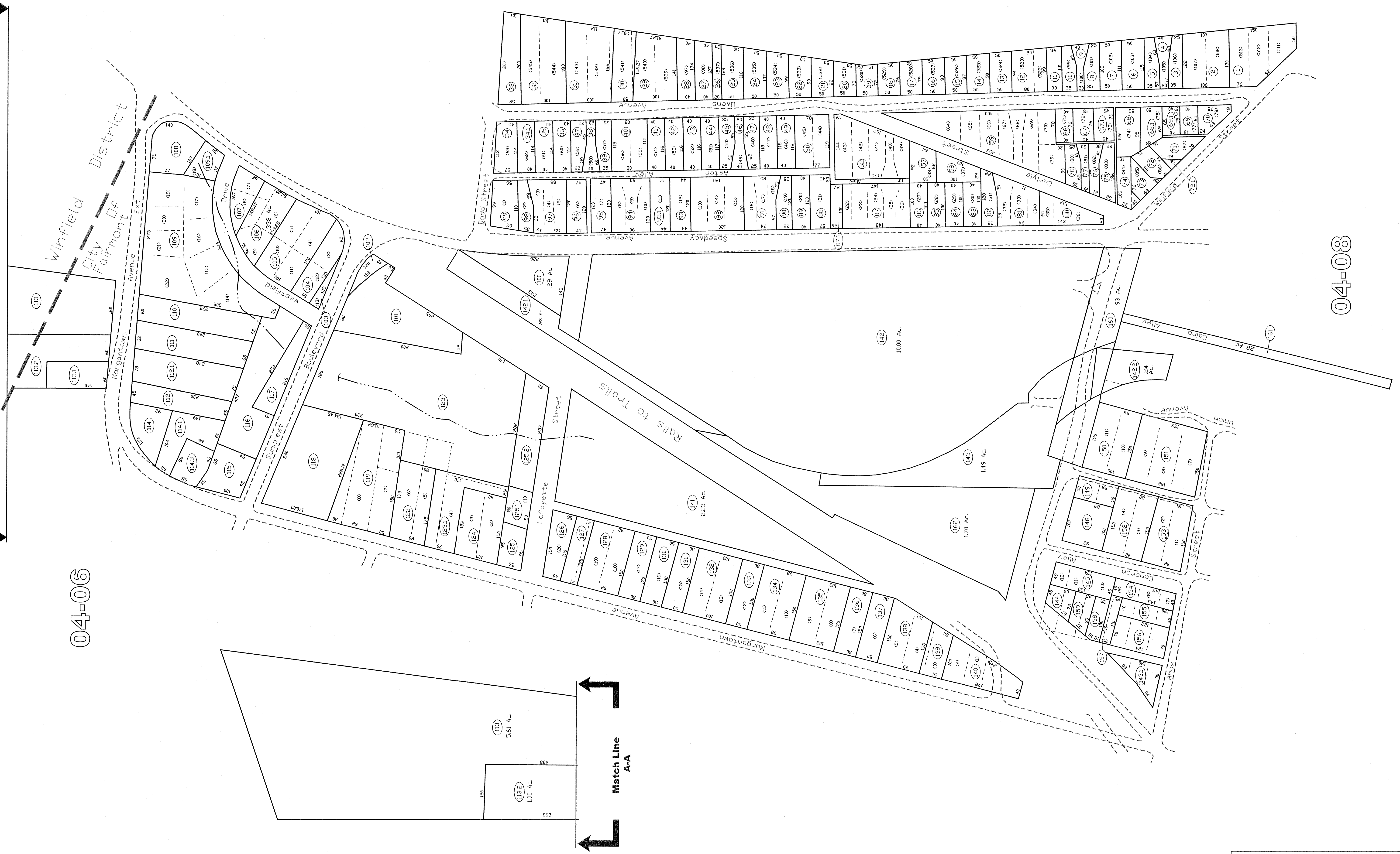
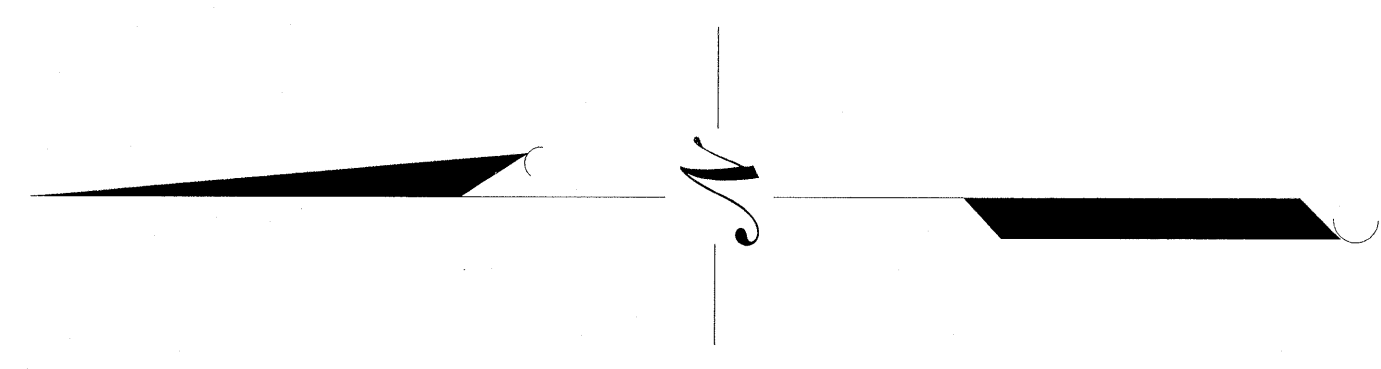
Match Line
A-A

Match Line
A-A

04-06

04-11

04-08



All tax maps created under the provisions of reapportioned legislation are the property of the Marion County Assessor's Office. The existence of data on this map does not imply any "official" status to such data. The WV State Tax Dept. and the Marion County Assessor's Office assume no liability and might result from use of this document. Assessor is prohibited by law, 20-14.

THIS DOCUMENT IS A TAX MAP. It was compiled for purposes of taxation from survey plat. The existence of data on this map does not imply any "official" status to such data. The WV State Tax Dept. and the Marion County Assessor's Office assume no liability and might result from use of this document. Assessor is prohibited by law, 20-14.

Property Line
Edge of roadway
Corporation Line
Hydrography

Original Lot Line
Lot number
Tax Parcel Number
Railroad

Office of the
Marion County Assessor
James P. Pricer, Assessor

Revision History
MADDER, J.P. MARCH, 2002
NEW MAP, J.T. MARCH, 2004
NEW MAP, N.E.K. SEPTEMBER, 2005

Winfield City
04-07

Winfield City
04-07

