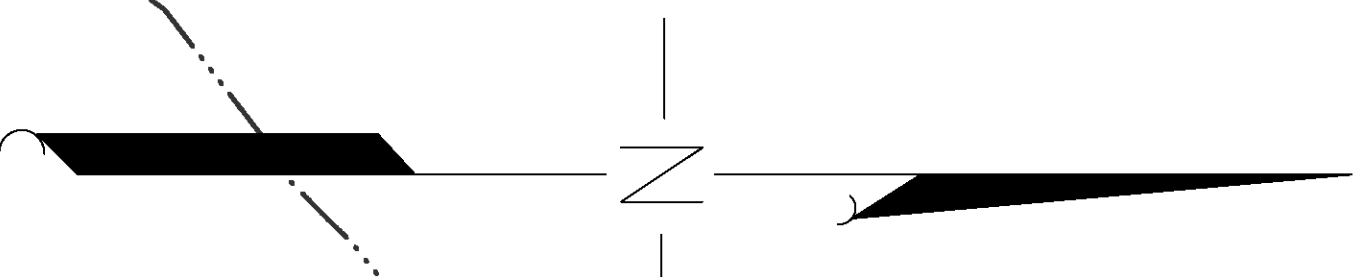


DISTRICT

21_0027A

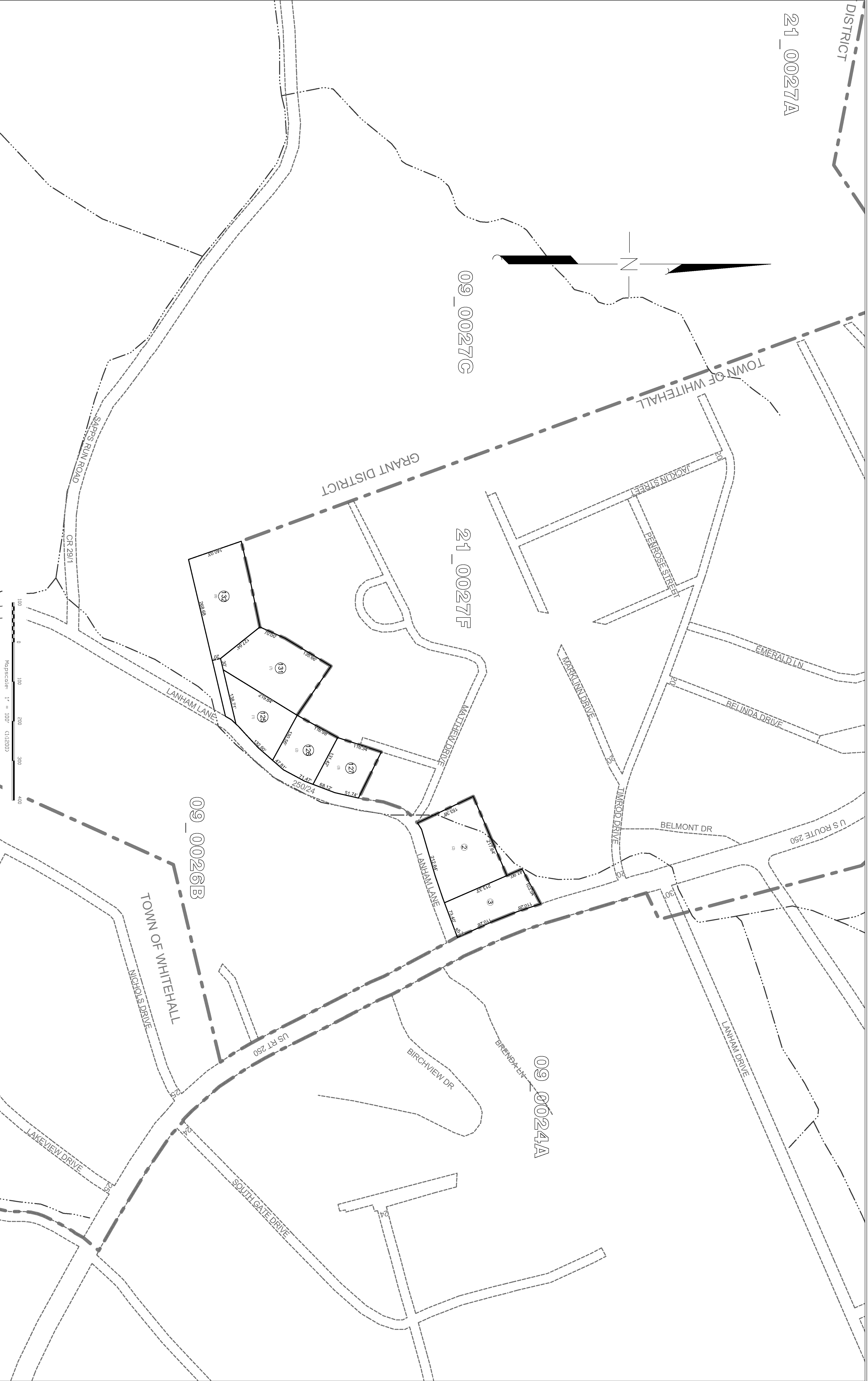


09_0027G

21_0027F

09_0024A

09_0026B



THIS DOCUMENT IS A TAX MAP. It was compiled for purposes of taxation from available record evidence and has not been field verified. It is not a valid survey plat. The existence of data on this map does not imply any "official" status to such data. The WV State Tax Dept. and the Marion County Assessor's Office assume no liability that might result from use of this document.

Property Line	Original Lot Line
Edge of roadway	Lot number
Corporation Line	Tax Parcel Number
Hydrography	Railroad

Office of the
Marion County Assessor
James P. Proctor, Assessor

Revision	History	Date
1	NEW MAP	MAY, 2002
2	NEW MAP	DECEMBER, 2007
3	NEW MAP	SEPT., 2014
4	NEW MAP	
5		

All tax maps created under the provisions of reappraisal registration are the property of the Marion County Reappraisal Program and the reproduction, copying, distribution or sale of such maps or any copies thereof without the written permission of the Marion County Assessor is prohibited by law. 03-14

Grant District
09-27F