

02-01

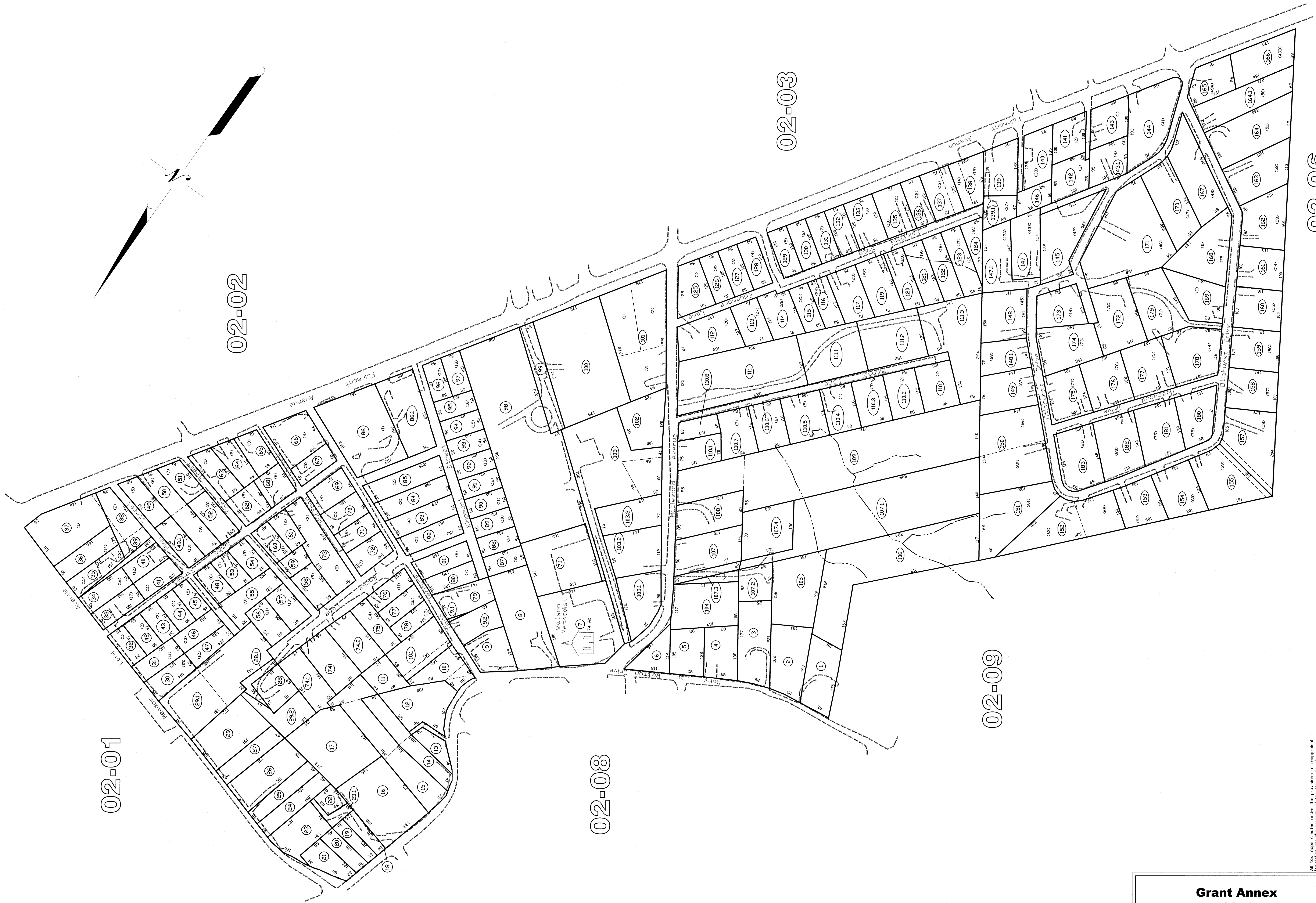
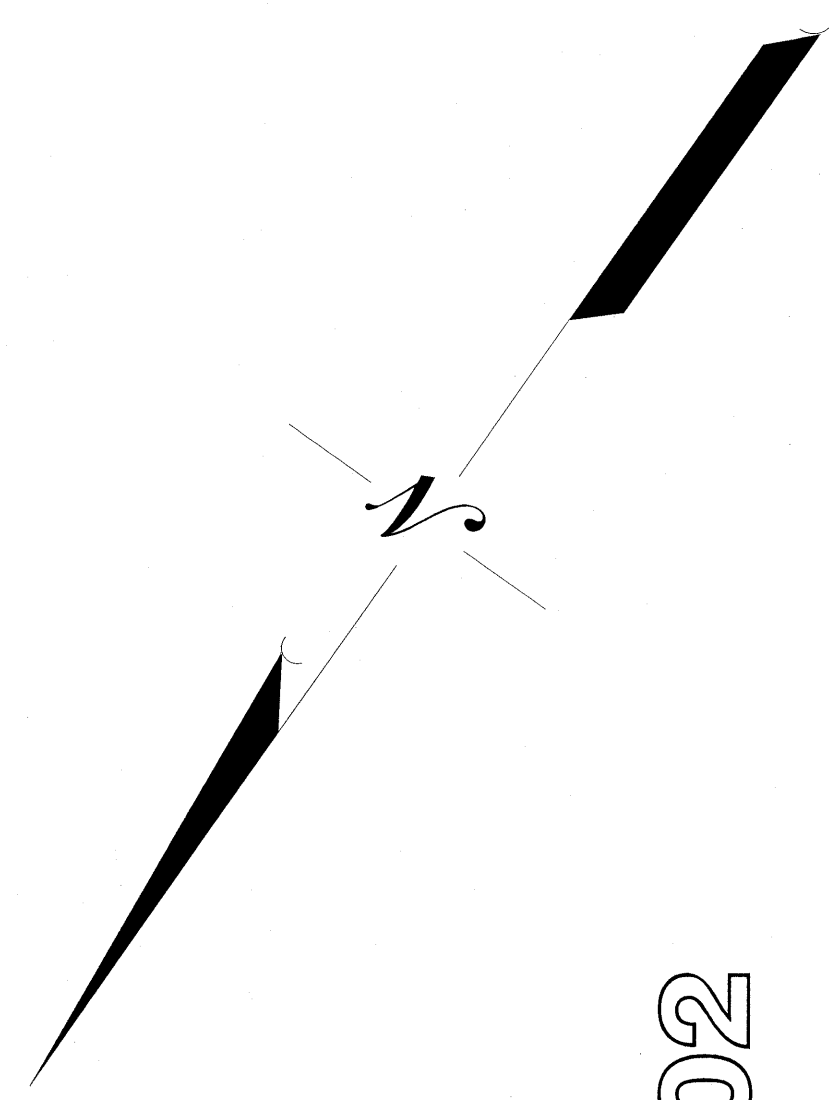
02-02

02-03

02-09

02-08

02-06



**Grant Annex**  
02-07

All tax maps created under the provisions of reauthorized legislation are the property of the Marion County Assessor's Office. The existence of data on this map does not imply any "official" status to such data. The WV State Tax Dept. and the Marion County Assessor's Office assume no liability that might result from use of this document. Assessor's Office is prohibited by law. 02-14

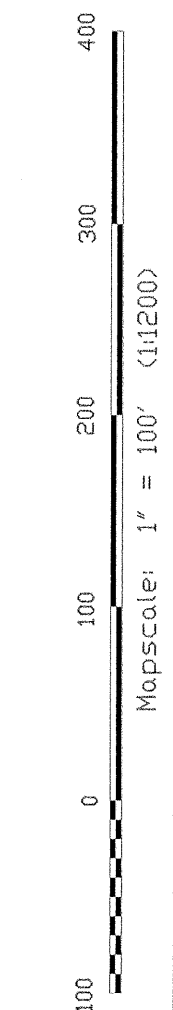
THIS DOCUMENT IS A TAX MAP. It was compiled for purposes of taxation from survey plat. The existence of data on this map does not imply any "official" status to such data. The WV State Tax Dept. and the Marion County Assessor's Office assume no liability that might result from use of this document.

**LEGEND**

Property Line	Original Lot Line
Edge of roadway	Lot number
Corporation Line	Tax Parcel Number
Hydrography	Railroad

**Office of the Marion County Assessor**  
*James P. Proctor, Assessor*

REVISION	HISTORY
1	NEW MAP TN APRIL, 2002
2	NEW MAP TN NOVEMBER, 2003
3	NEW MAP TN NOVEMBER, 2003
4	NEW MAP VMS SEPTEMBER, 2005



**Grant Annex**  
02-07