

02-11

02-12

02-10

02-05

02-04

02-05A

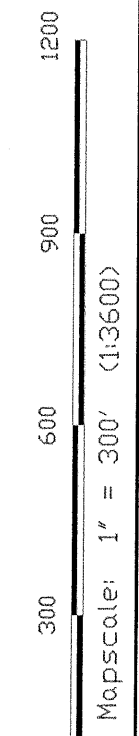
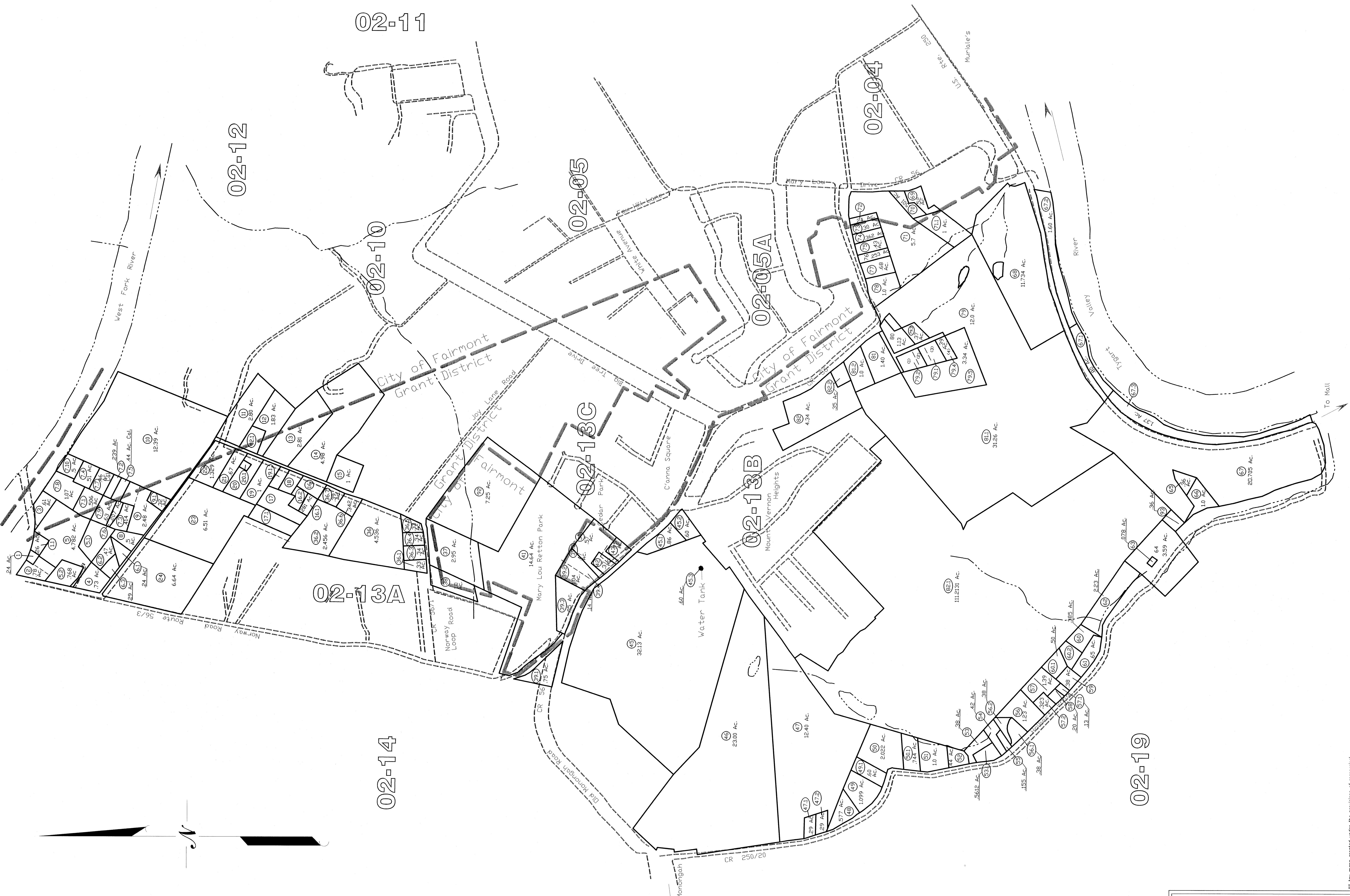
02-13C

02-13B

02-13A

02-14

02-19



All tax maps created under the provisions of reapportionment are the property of the Marion County Assessor's Office. The existence of data on this map does not imply any official distribution or sale of such maps or any copies thereof. Assessor's Office assumes no liability that might result from use of this document.

Grant District
02-13

LEGEND

- Property Line
- Original Lot Line
- Lot Number
- Corporation Line
- Hydrography
- On
- Off
- Tax Parcel Number
- 17
- +++++
- Railroad

Office of the
Marion County Assessor
James P. Prister, Assessor

Revision	Mapper	History	Date
1	NEW MAP	TN	APRIL 2002
2	NEW MAP	VS	SEPTEMBER 2005
3	NEW MAP	VS	JUNE 2005
4			
5			

Grant District
02-13