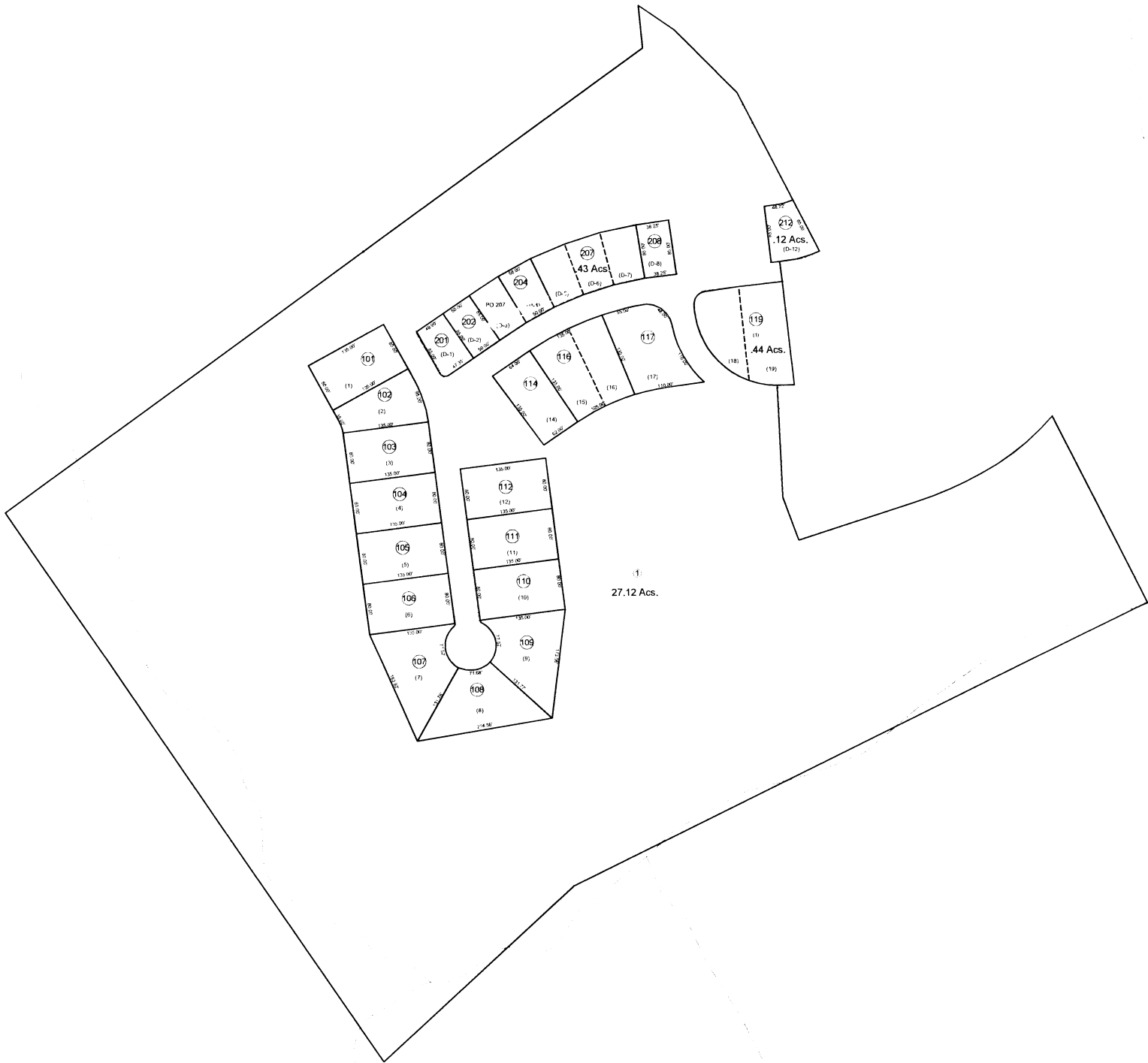


09_0021C

09_0021

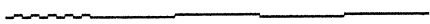


09_0021

09_0021

Grant District
09_21B

All tax maps created under the provisions of reappraisal legislation are the property of the Marion County Reappraisal Program and the reproduction, copying, distribution or sale of such maps or any copies thereof without the written permission of the Marion County Assessor is prohibited by law. 03-14



LEGEND

Property Line	—	Original Lot Line	—
Edge of roadway	—	Lot number	(11)
Corporation Line	—	Tax Parcel Number	(17)
Hydrography	—	Railroad	—

Office of the
Marion County Assessor
James P. Priesler, Assessor

Revision History	
Mapper	Date
1 NEW MAP TN	NOV, 2011
2	
3	
4	
5	

Grant District
09_21B

THIS DOCUMENT IS A TAX MAP: It was compiled for purposes of taxation from available record evidence and has not been field verified. It is not a valid survey plat. The existence of data on this map does not imply any "official" status to such data. The WV State Tax Dept. and the Marion County Assessor's Office assume no liability that might result from use of this document.