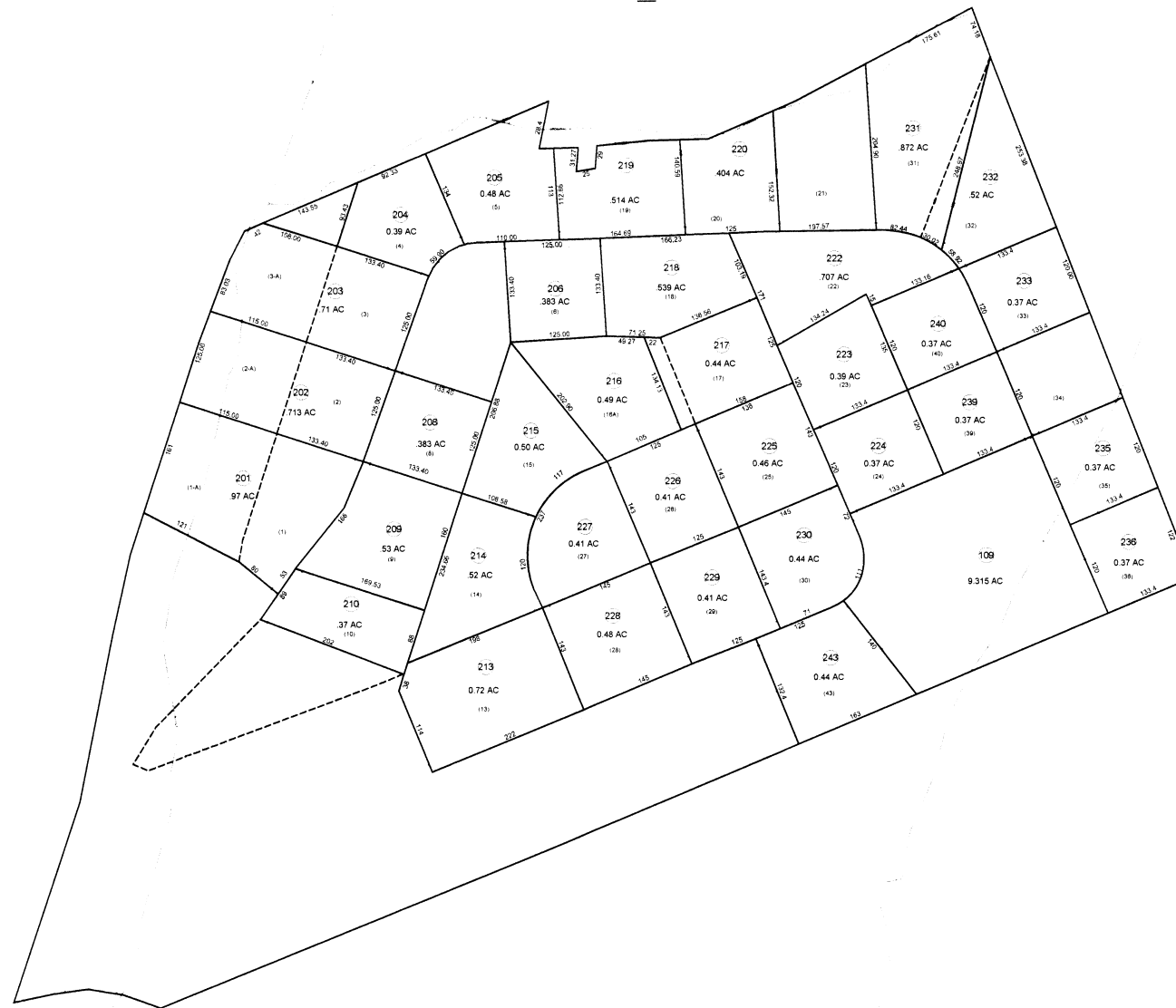


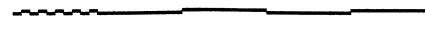
21_0027B

21_0027A



09_0027C

09_0027B



THIS DOCUMENT IS A TAX MAP: It was compiled for purposes of taxation from available record evidence and has not been field verified. It is not a valid survey plat. The existence of data on this map does not imply any "official" status to such data. The WV State Tax Dept. and the Marion County Assessor's Office assume no liability that might result from use of this document.

Property Line
Edge of roadway
Corporation Line
Hydrography

LEGEND

Original Lot Line
Lot number
Tax Parcel Number
Railroad

Office of the
Marion County Assessor
James P. Priester, Assessor

Revision	History	Date
1	NEW MAP	OCT, 2011
2		
3		
4		
5		

All tax maps created under the provisions of reappraisal legislation are the property of the Marion County Reappraisal Program and the reproduction, copying, distribution or sale of such maps or any copies thereof without the written permission of the Marion County Assessor is prohibited by law. 03-14

Grant District
09-27G