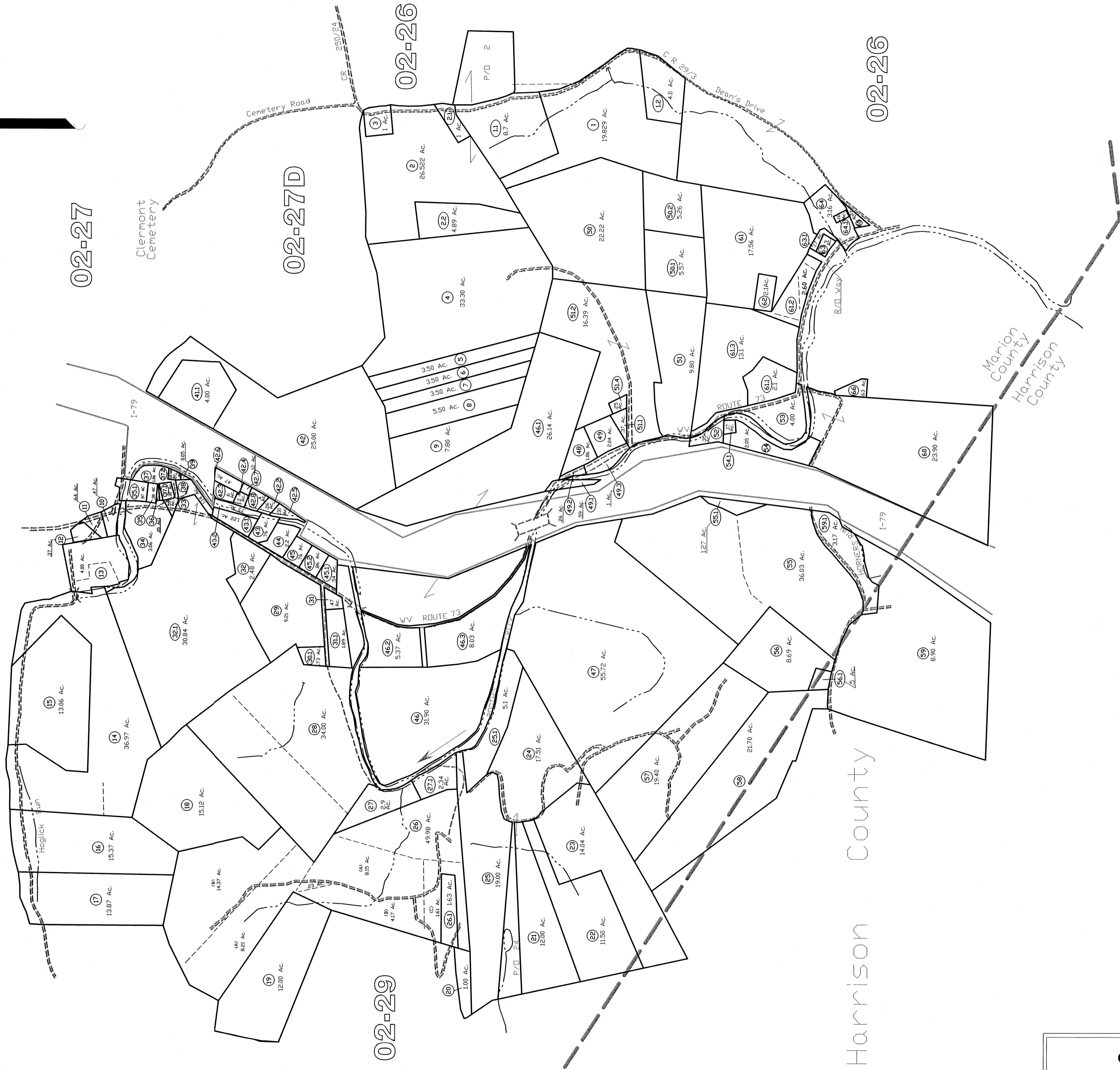




02-30

02-27



02-27D

02-29

02-26

Harrison County

02-26

Grant District
02-28

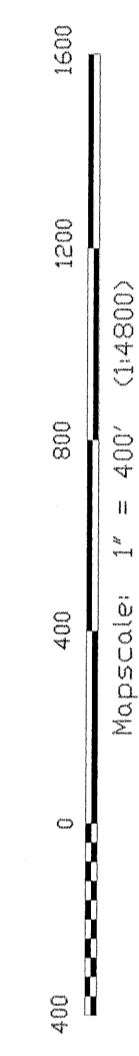
All lots were checked under the provisions of appropriate legislation on the property of the Marion County Assessor's Office and the reproduction, copying, or distribution of this map without the written permission of the Marion County Assessor is prohibited by law. 03-14

THIS DOCUMENT IS A TAX MAP. It was compiled for purposes of taxation from available record evidence and has not been field verified. It is not a valid status to such data. The WV State Tax Dept. and the Marion County Assessor's Office assume no liability that might result from use of this document.

LEGEND

Property Line	Original Lot Line
Edge of roadway	Lot number
Corporation Line	Tax Parcel Number
Hydrography	Railroad

Map Scale: 1" = 400' (1:16000)



Office of the
Marion County Assessor
James P. Bricker, Assessor

Revision	Mapper	History
1	NEW MAP TN	APRIL, 2002
2	NEW MAP TN	NOVEMBER, 2003
3	NEW MAP JT	2004
4	NEW MAP NLK	SEPTEMBER, 2005

Grant District
02-28