

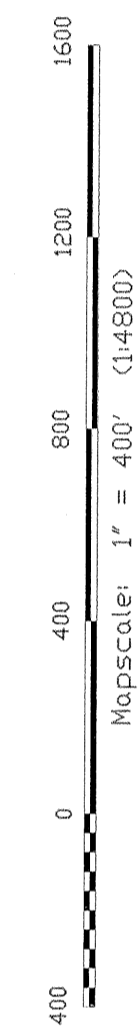
Paw Paw District
05-27

All tax maps created under the provisions of appraisal legislation are the property of the Marion County Appraisal Program and the reproduction, copying, or reuse of such data without the written permission of the Marion County Assessor is prohibited by law 03-14

THIS DOCUMENT IS A TAX MAP. It was compiled for purposes of taxation from evidence and has not been field verified. It is not a "warranty" or "guarantee" of accuracy. The WV State Tax Dept. and the Marion County Assessor's Office assume no liability that might result from use of this document.

LEGEND

- Property Line
- Highway
- District Line
- Hydrography
- Original Lot Line
- Lot number
- Tax Parcel Number
- Railroad

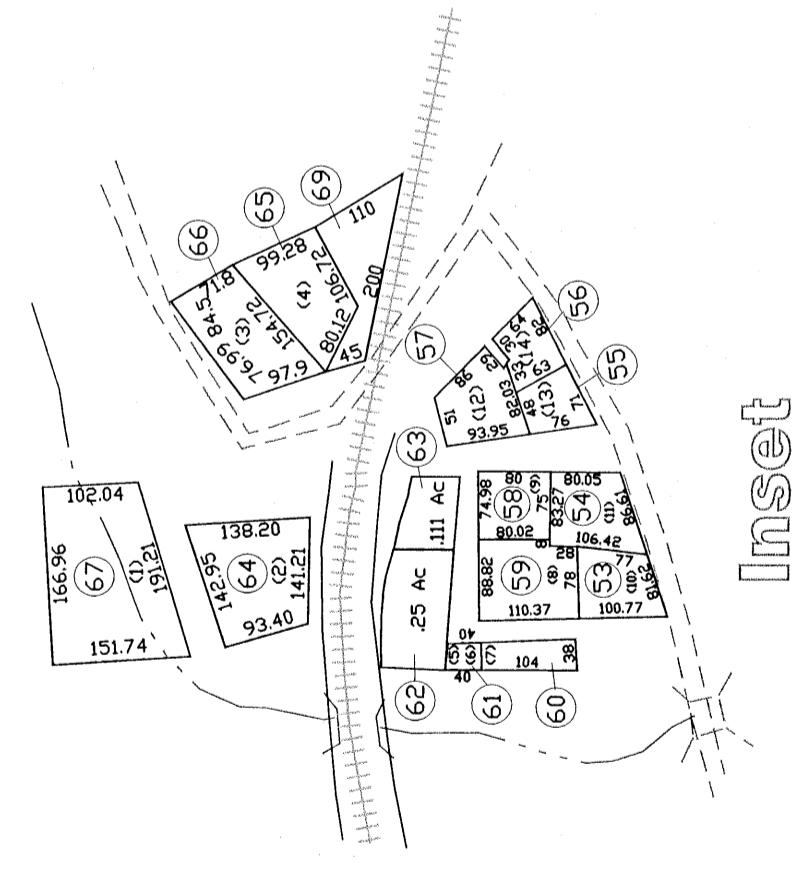


Office of the Marion County Assessor
James P. Prosser, Assessor

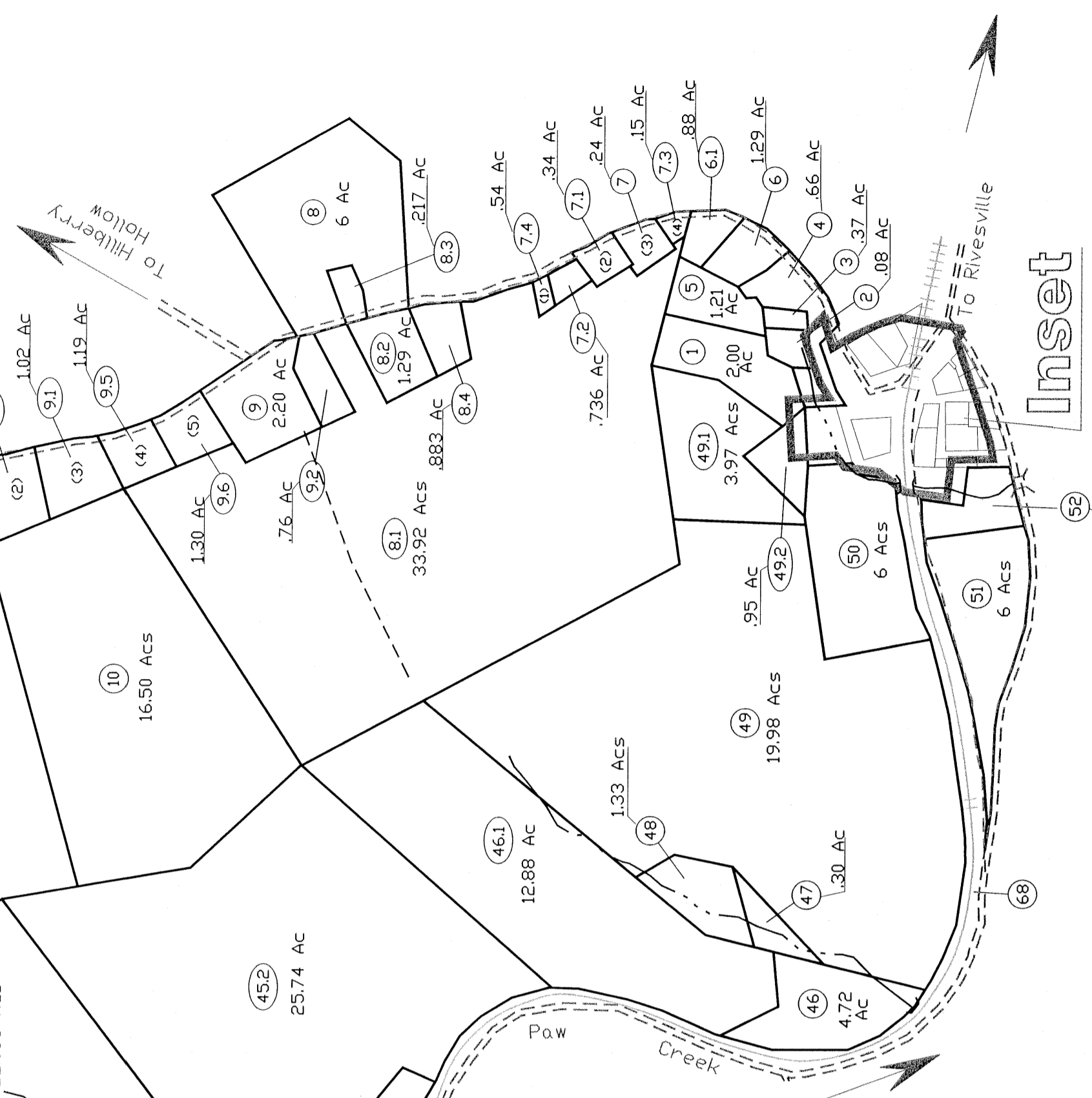
| REVISION | REVISION | DATE |
|----------|----------|--------------|
| 1 | NEW MAP | MARCH, 2002 |
| 2 | NEW MAP | AUGUST, 2005 |
| 3 | | |
| 4 | | |
| 5 | | |

Paw Paw District
05-27

Inset
Mapscale: 1" = 200' (1:2400)



Inset
Mapscale: 1" = 400' (1:1600)



05-31

05-28

05-32

05-26

05-23

05-27A