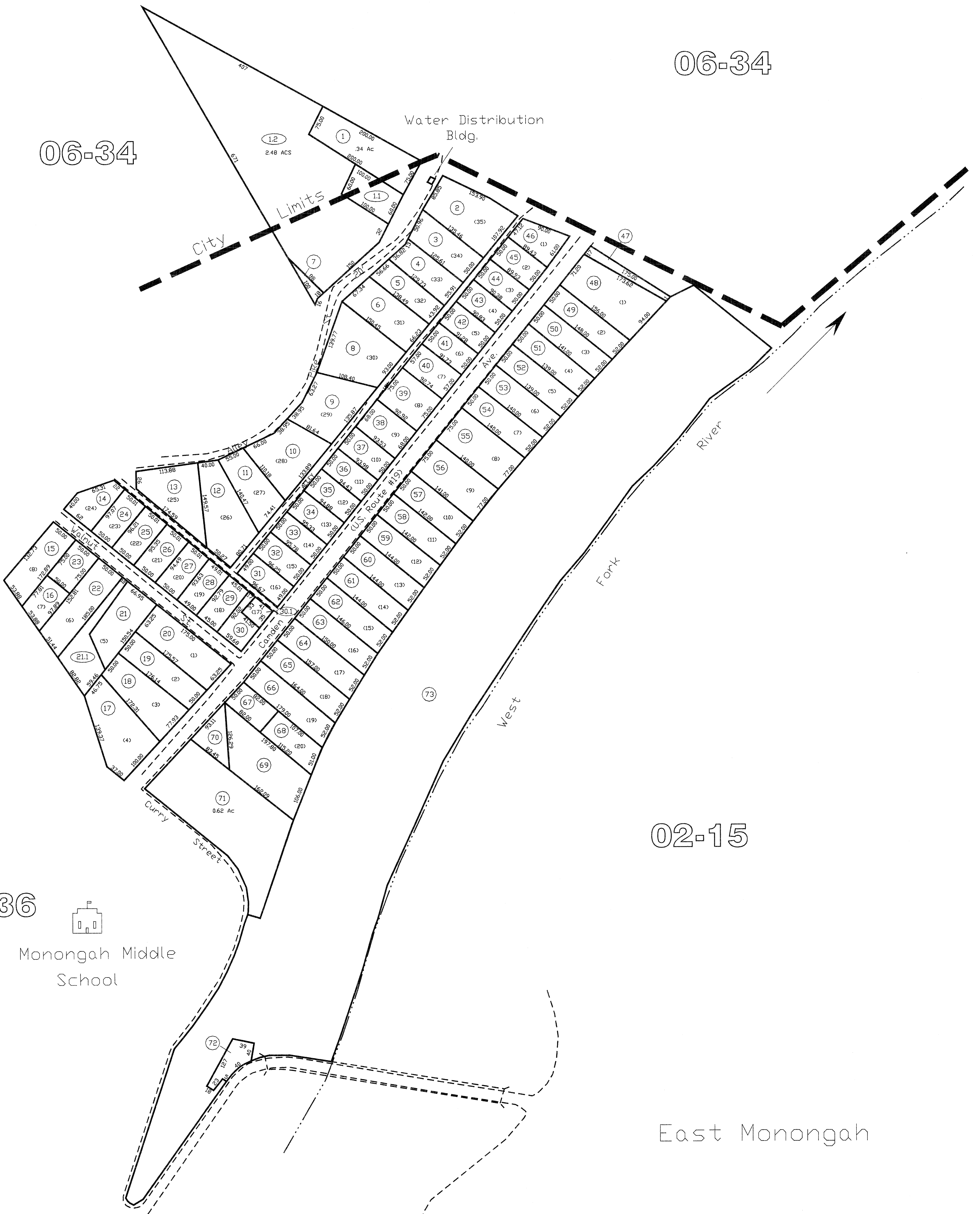
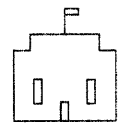


06-34

06-34



06-36



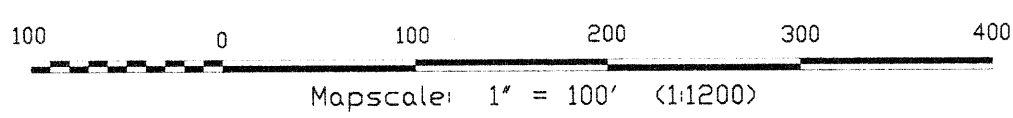
Monongah Middle School

02-15

East Monongah

Lincoln District
06-35

All tax maps created under the provisions of reappraisal legislation are the property of the Marion County Reappraisal Program and the reproduction, copying, distribution or sale of such maps or any copies thereof without the written permission of the Marion County Assessor is prohibited by law. 03-14



LEGEND

- Property Line ————
- Edge of roadway - - - - -
- City Limits - - - - -
- Hydrography - - - - -
- Original Lot Line - - - - -
- Lot number (17)
- Tax Parcel Number (17)

Office of the
Marion County Assessor
James P. Priesler, Assessor

Revision	History
Mapper	Date
1	NEW MAP TN
2	FEBRUARY, 2002
3	
4	
5	

Lincoln District
06-35