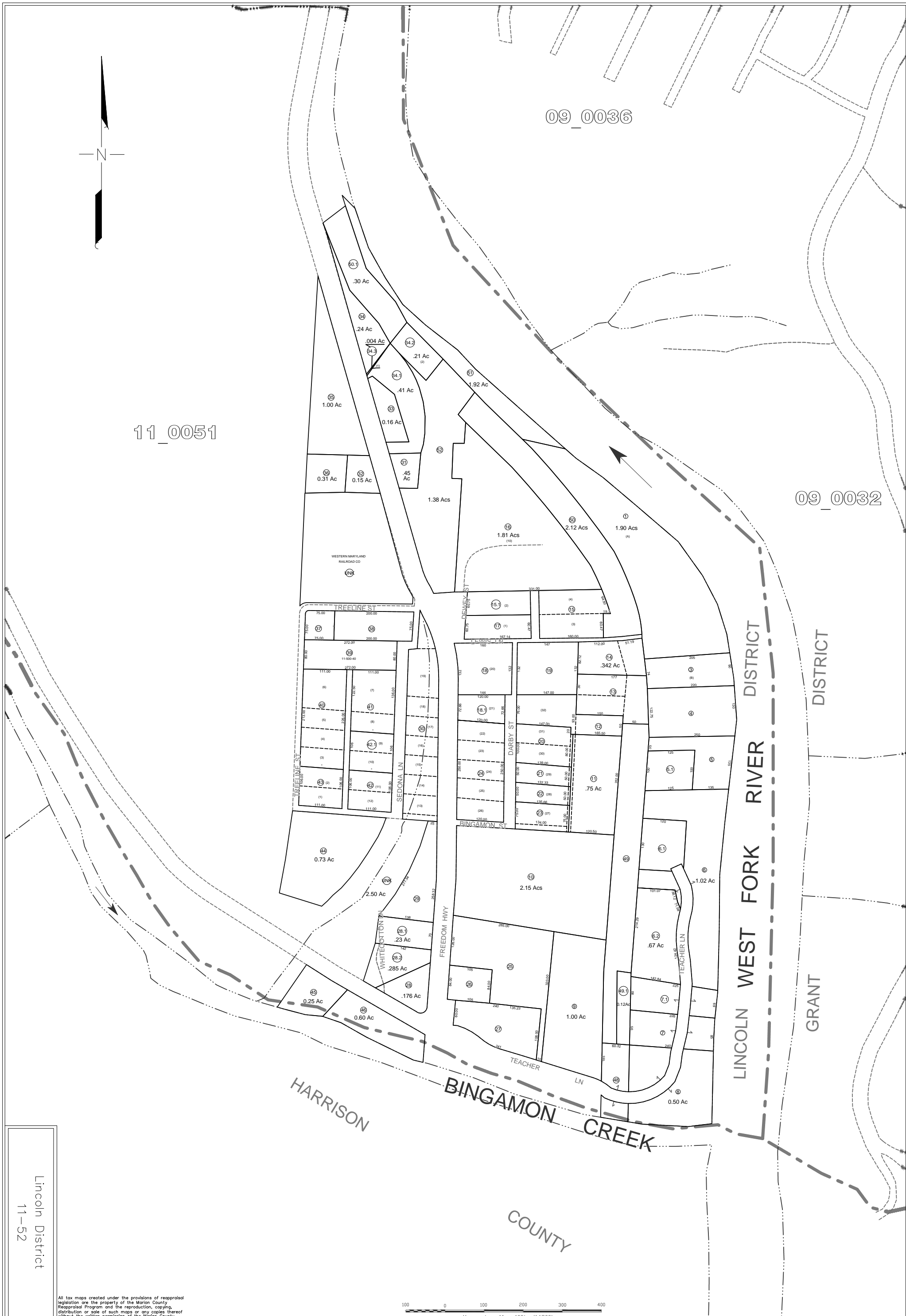


09\_0036

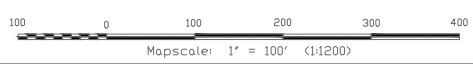
11\_0051

09\_0032



Lincoln District  
11-52

All tax maps created under the provisions of reappraisal legislation are the property of the Marion County Reappraisal Program and the reproduction, copying, distribution or sale of such maps or any copies thereof without the written permission of the Marion County Assessor is prohibited by law. 03-14



**LEGEND**

Property Line	—————	Original Lot Line	- - - - -
Edge of roadway	-----	Lot number	17
Corporation Line	-----	Tax Parcel Number	17
Hydrography	~~~~~	Railroad	+++++

Office of the  
Marion County Assessor

Revision History	
Revision	Date
1	NEW MAP TN
2	OCT, 2016
3	
4	

Lincoln District  
11-52