



05-17

06-10

01-47

01-47-12

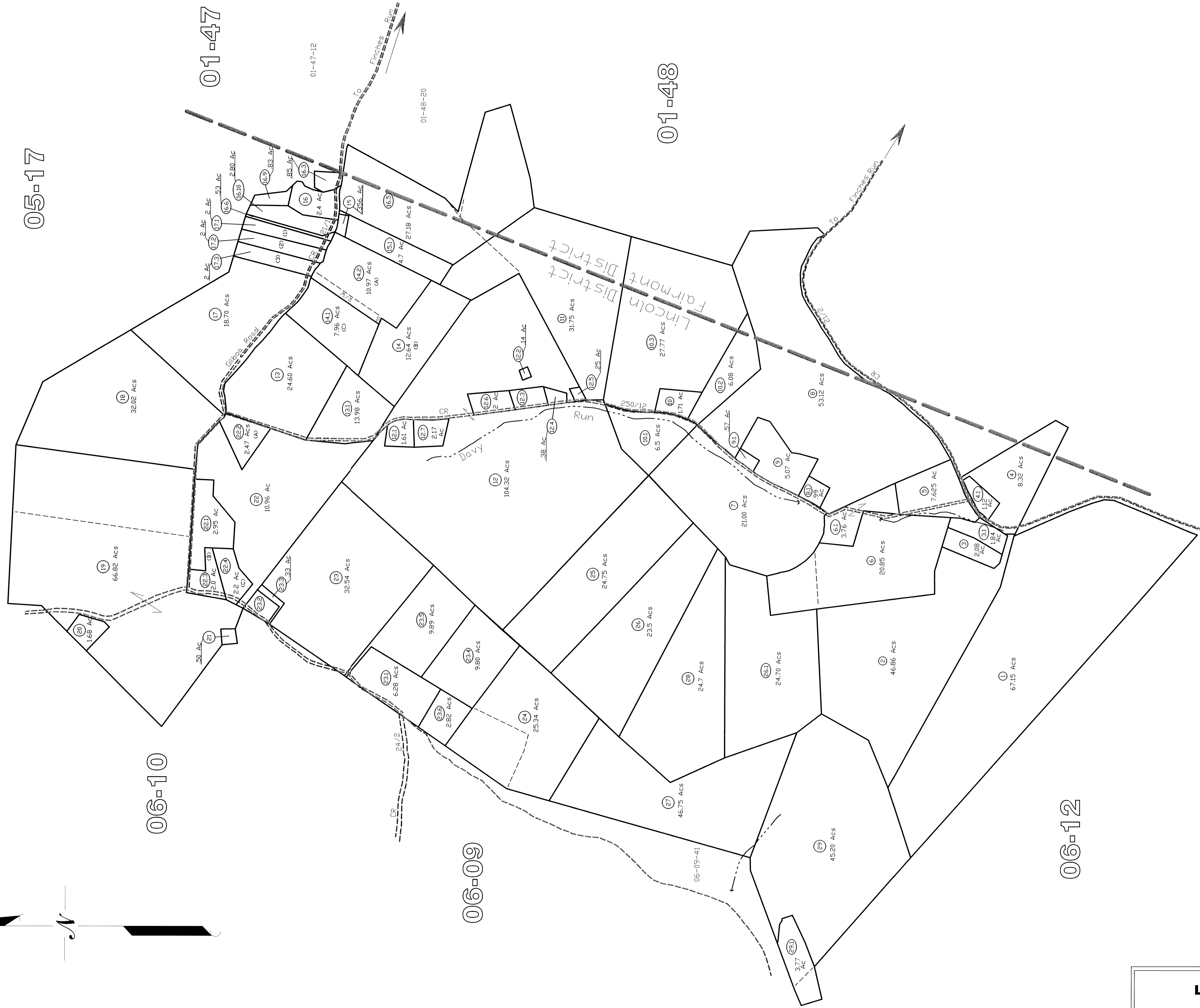
01-48-20

01-48

06-09

06-09-41

06-12



**Lincoln District**  
06-11

THIS DOCUMENT IS A TAX MAP. It was compiled for purposes of taxation from survey plat. The existence of data on this map does not imply any official status to such data. The WV State Tax Dept. and the Marion County Assessor's Office assume no liability for any errors or omissions that may appear hereof without the written permission of the Marion County Assessor's Office. Prepared by: 05-11.

**LEGEND**

Property Line	-----
Original Lot Line	-----
District Line	-----
Hydrography	-----
Lot Number	15
Page Number	HHHHHH
Railroad	-----

**Office of the**  
**Marion County Assessor**  
*James P. Prosser, Assessor*

Revision	Reviser	History	Date
1	NEW MAP_TN	Mapper	FEBRUARY, 2002
2	NEW MAP_JT		2004
3	NEW MAP_VMS		AUGUST, 2005
4			
5			

**Lincoln District**  
06-11