

Inset
Society Hill
Mapscale: 1" = 200' (1:2400)

06-30

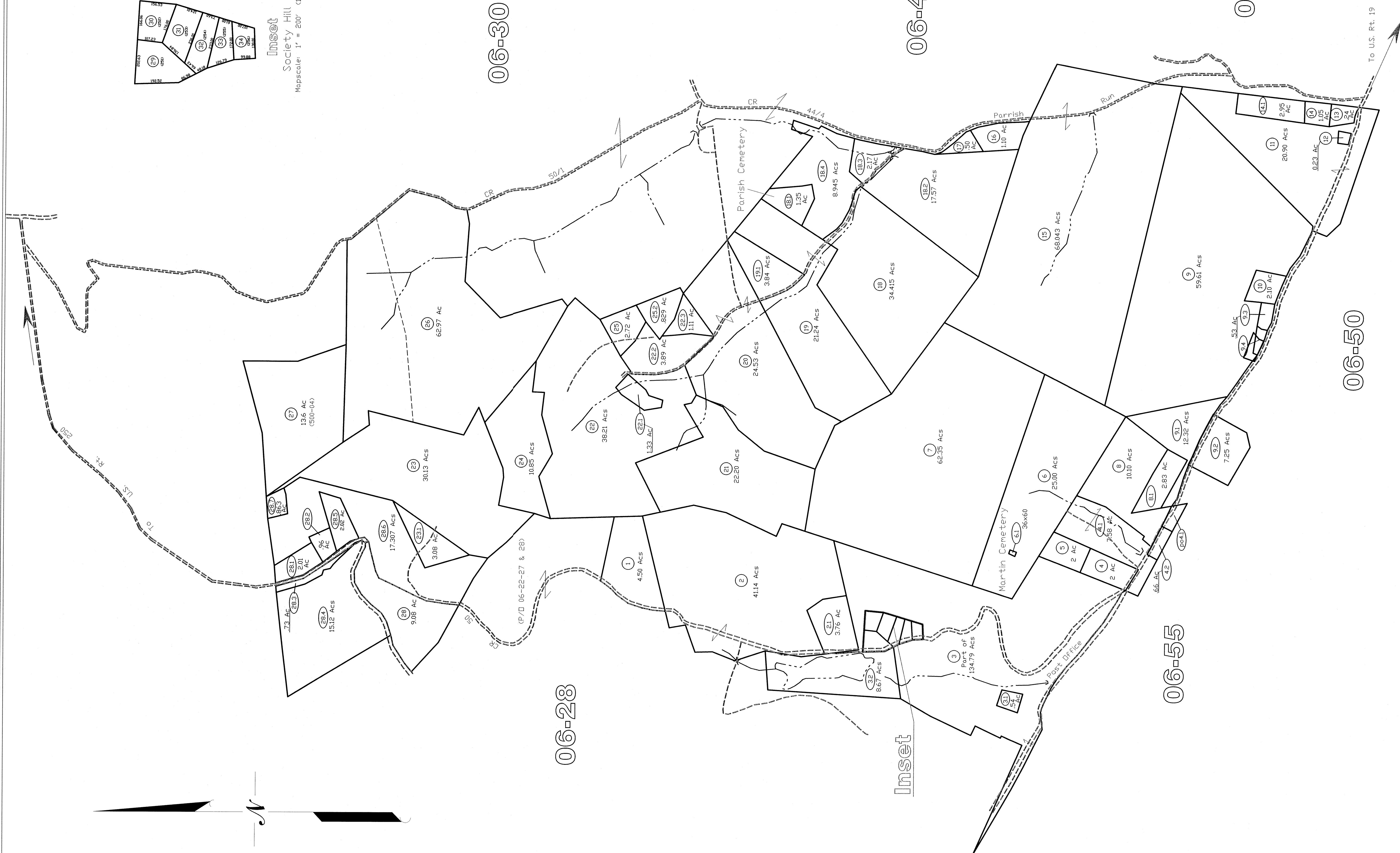
06-47

06-50

06-28

06-55

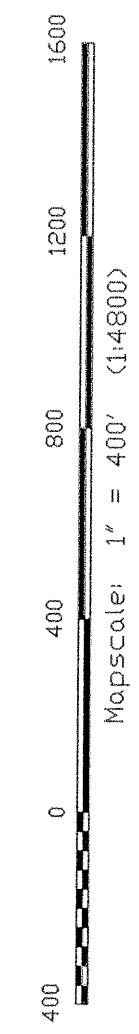
06-50



Inset

All tax maps created under the provisions of reorganized legislation are the property of this Marion County Assessor's Office. The existence of data on this map does not imply any "official" distribution or sale of such maps or any copies thereof without the written permission of the Marion County Assessor's Office.

THIS DOCUMENT IS A TAX MAP. It was compiled for purposes of taxation from available records and is not a survey. It is not to be used for any other purpose. The existence of data on this map does not imply any "official" distribution or sale of such maps or any copies thereof without the written permission of the Marion County Assessor's Office. The Assessor's Office assumes no liability that might result from use of this document.



LEGEND

Property Line	Original Lot Line
Edge of roadway	County Parcel Number
Cooperation Line	Railroad
Hydrography	

**Office of the
Marion County Assessor**
James P. Prosser, Assessor

Revision	History	Date
1	NEW MAP	FE BRUARY, 2002
2	NEW MAP	JULY, 2004
3	NEW MAP	AUGUST, 2005
4		
5		

Lincoln District
06-29

Lincoln District
06-29