

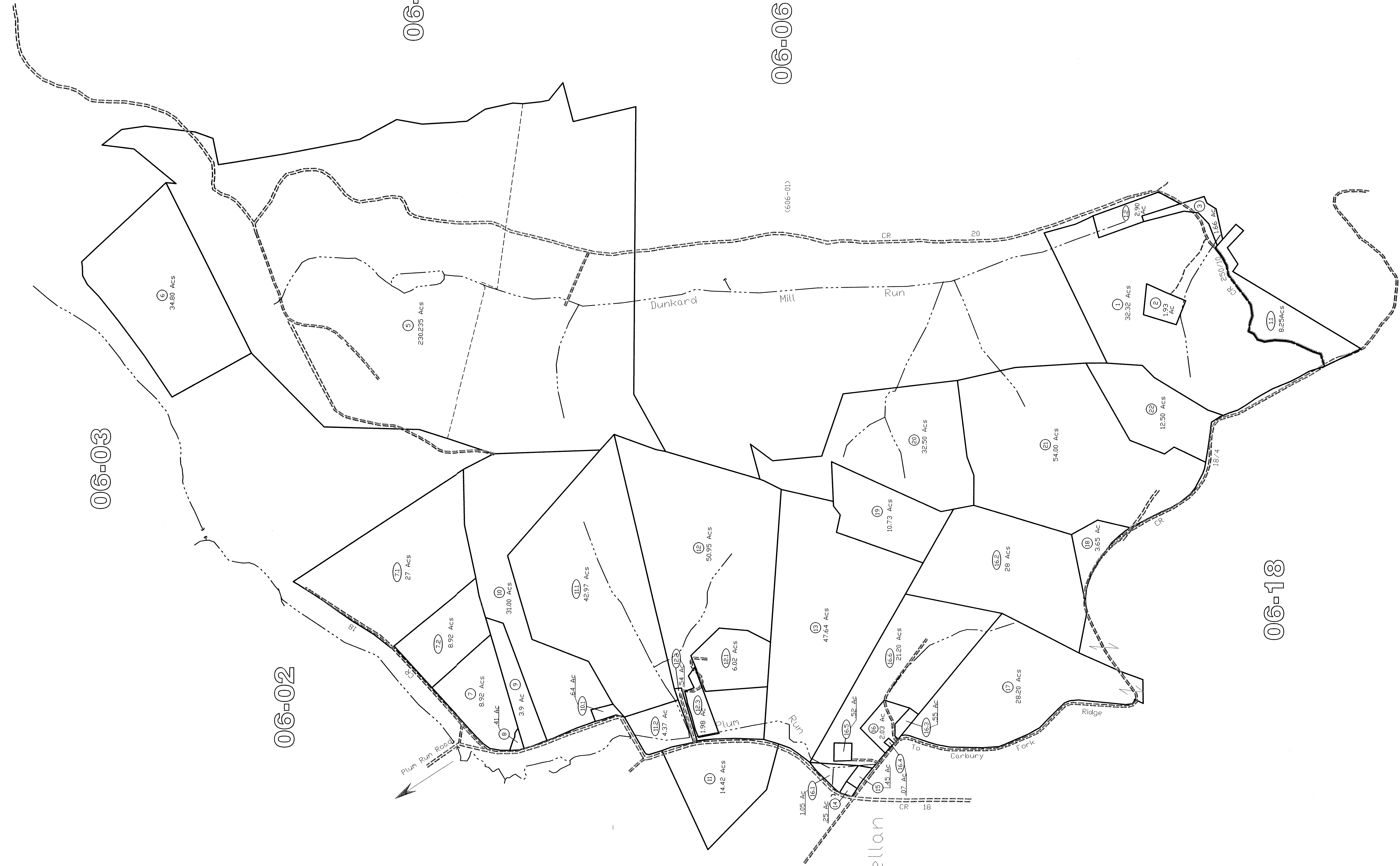
06-03

06-05

06-06

06-02

06-18



All tax maps created under the provisions of reorganizational legislation are the property of the Marion County Assessor's Office. The existence of state tax liens, and the Marion County Assessor's Office assume no liability that might result from use of this document.

Lincoln District
06-04

LEGEND

- Property Line
- Survey Line
- Corporation Line
- Hydrography
- Original Lot Line
- Lot Number
- Lot Parcel Number

Office of the
Marion County Assessor
James P. Prosser, Assessor

Revision	History	Date
1	NEW MAP	FE BRUARY, 2002
2	NEW MAP	JULY, 2004
3	NEW MAP	AUGUST, 2005

Lincoln District
06-04