

Inset
Mapscale: 1" = 200' (1:2400)

06-31

Inset

06-30

06-32

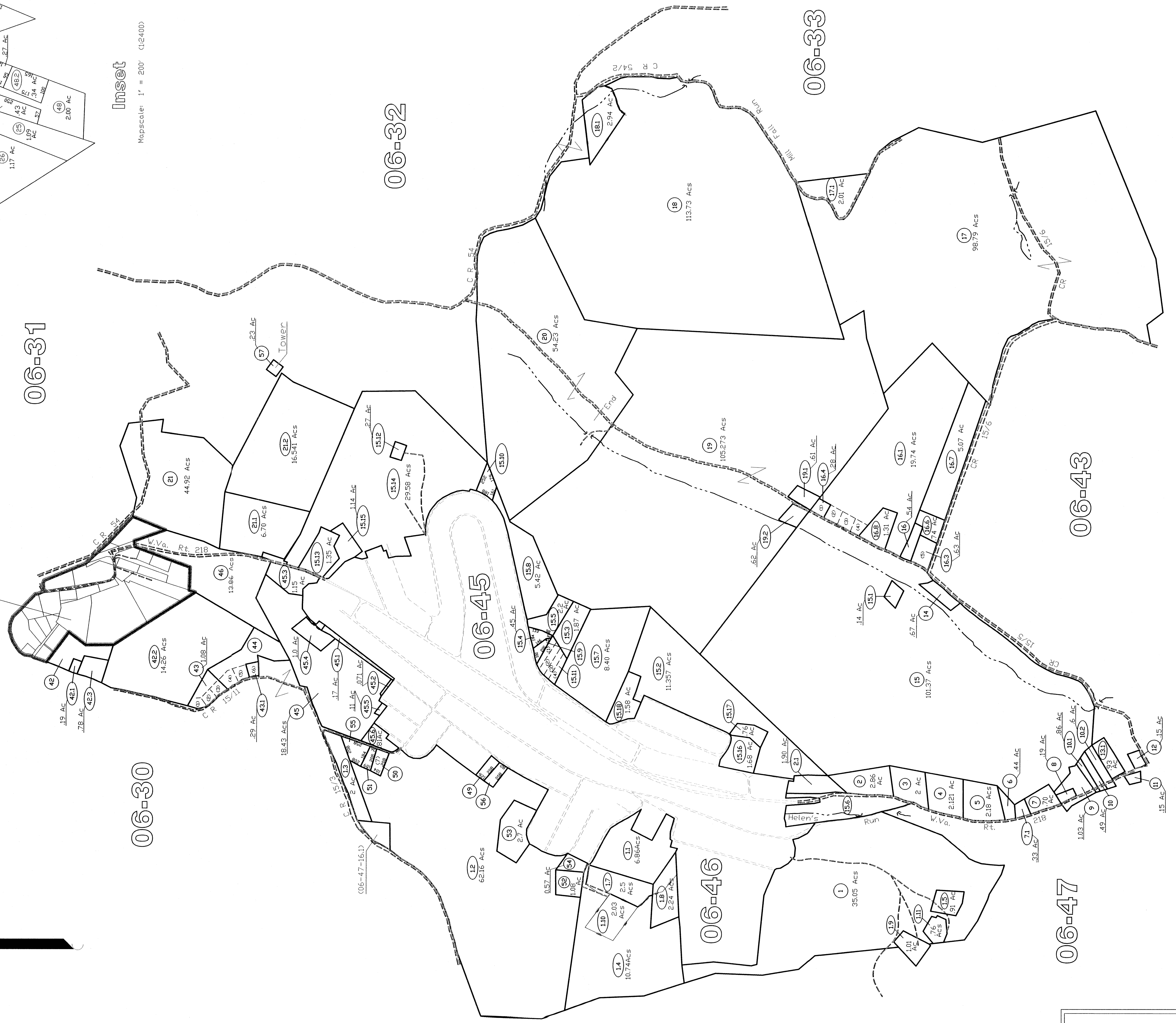
06-33

06-45

06-46

06-47

06-43



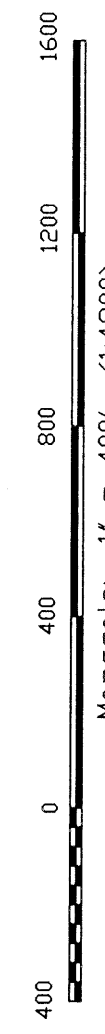
All tax maps created under the provisions of reprobated legislation are the property of the Marion County Assessor's Office. The existence of data on this map does not imply any "official" distribution or sale of such maps or any copies thereof. The Assessor's Office assumes no liability that might result from use of this document.

THIS DOCUMENT IS A TAX MAP. It was compiled by reference to location from available record evidence and has been field verified. It is not a survey plat. The existence of data on this map does not imply any "official" distribution or sale of such maps or any copies thereof. The Assessor's Office assumes no liability that might result from use of this document.

LEGEND

- Property Line
- Edge of roadway
- Inset
- Hydrography
- Original Lot Line
- Tax Parcel Number

Mapscale: 1" = 400' (1:4800)



Revision History

Revision	Mapper	Date
1	NEW MAP	FEBRUARY, 2002
2	NEW MAP	NOVEMBER, 2003
3	NEW MAP	JUN, 2004
4	NEW MAP	AUGUST, 2005

Office of the
Marion County Assessor
James P. Prisker, Assessor

Lincoln District
06-44

Lincoln District
06-44