

06-42

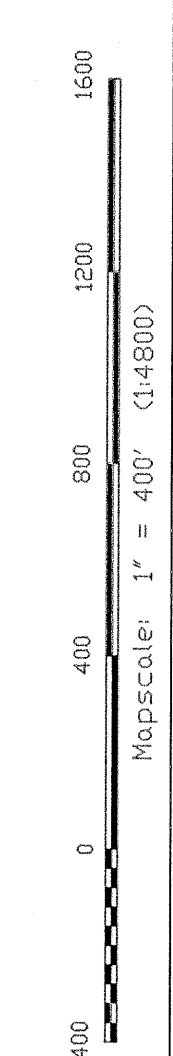
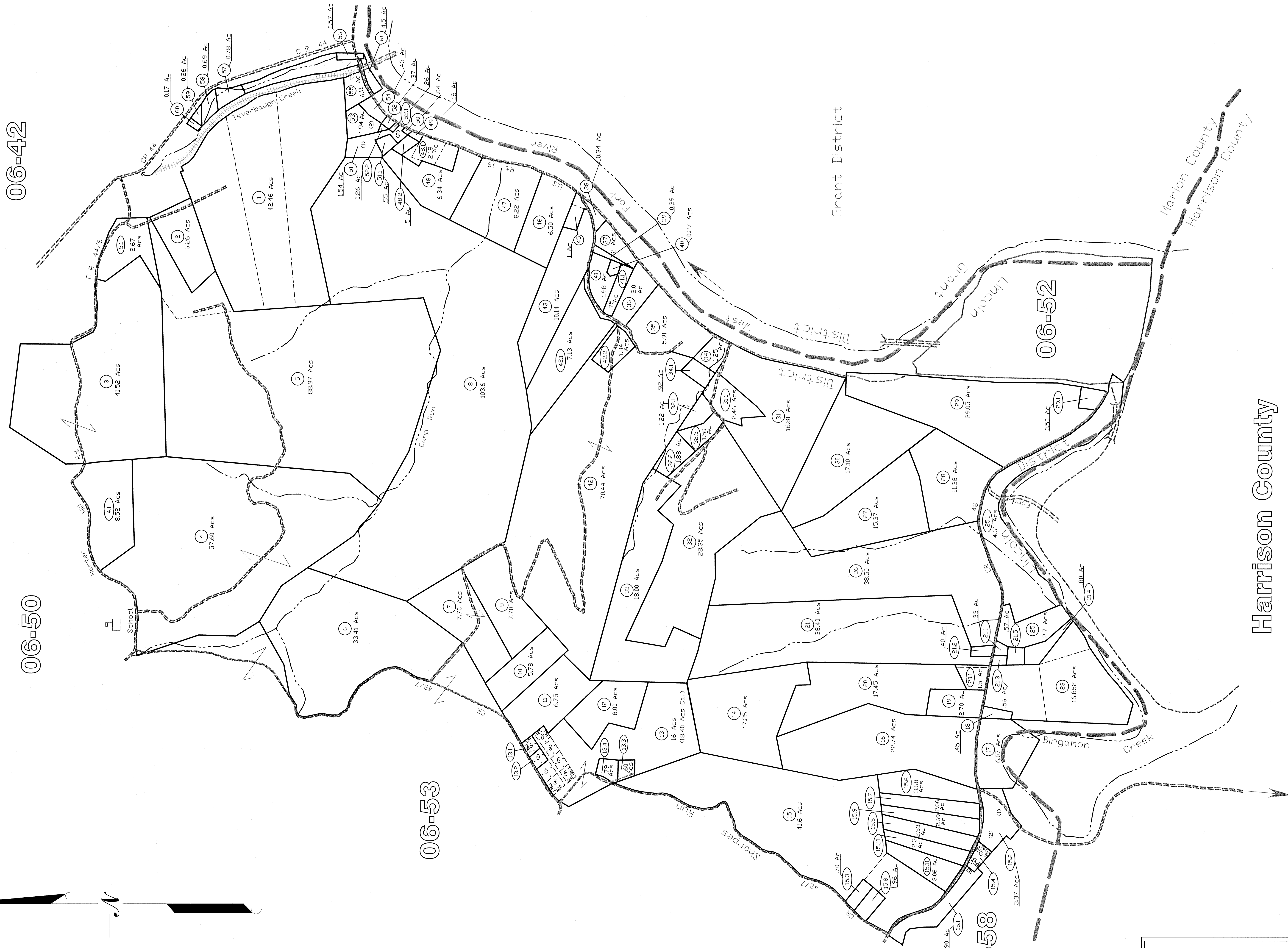
06-50

06-53

06-58

06-52

Lincoln District
06-51



All tax maps created under the provisions of reorganized legislation are the property of the Marion County Assessor's Office. The existence of data on this map does not imply any "official" distribution or sale of such maps or any copies thereof without the written permission of the Marion County Assessor's Office. No liability may be assumed from use of this document.

LEGEND

- Parcel Line
- County Line
- Edge of town
- Hydrography
- Original Lot Line
- Top Parcel Number
- Railroad

Office of the
Marion County Assessor
James P. Pincason, Assessor

Revision	History
1	NEW MAP TN
2	NEW MAP TN
3	NEW MAP VMS
4	NEW MAP VMS

Lincoln District
06-51