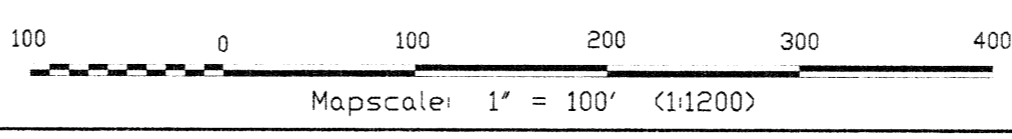
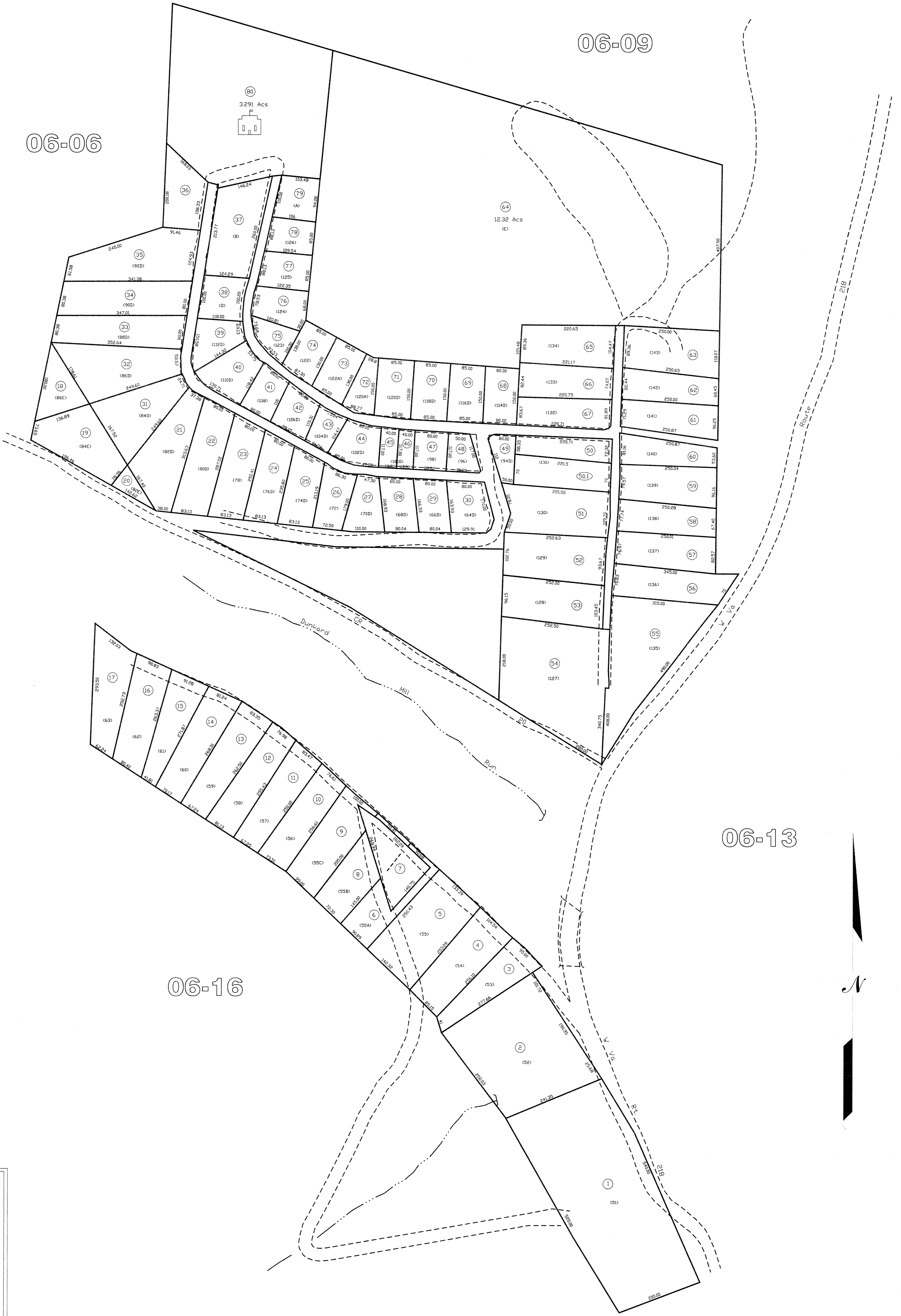


06-06

06-09

06-13

06-16



Lincoln District
 06-07

All tax maps created under the provisions of reappraisal legislation are the property of the Marion County Reappraisal Program and the reproduction, copying, distribution or sale of such maps or any copies thereof without the written permission of the Marion County Assessor is prohibited by law. 03-14

THIS DOCUMENT IS A TAX MAP. It was compiled for purposes of taxation from available record evidence and has not been field verified. It is not a valid survey plat. The existence of data on this map does not imply any "official" status to such data. The WV State Tax Dept. and the Marion County Assessor's Office assume no liability that might result from use of this document.

LEGEND	
Property Line	Original Lot Line
Edge of roadway	List number
Corporation Line	Tax Parcel Number
Hydrography	17

Office of the
Marion County Assessor
James P. Priesler, Assessor

Revision	History
Mapper	Date
NEW MAP TN	FEBRUARY, 2002

Lincoln District
 06-07