



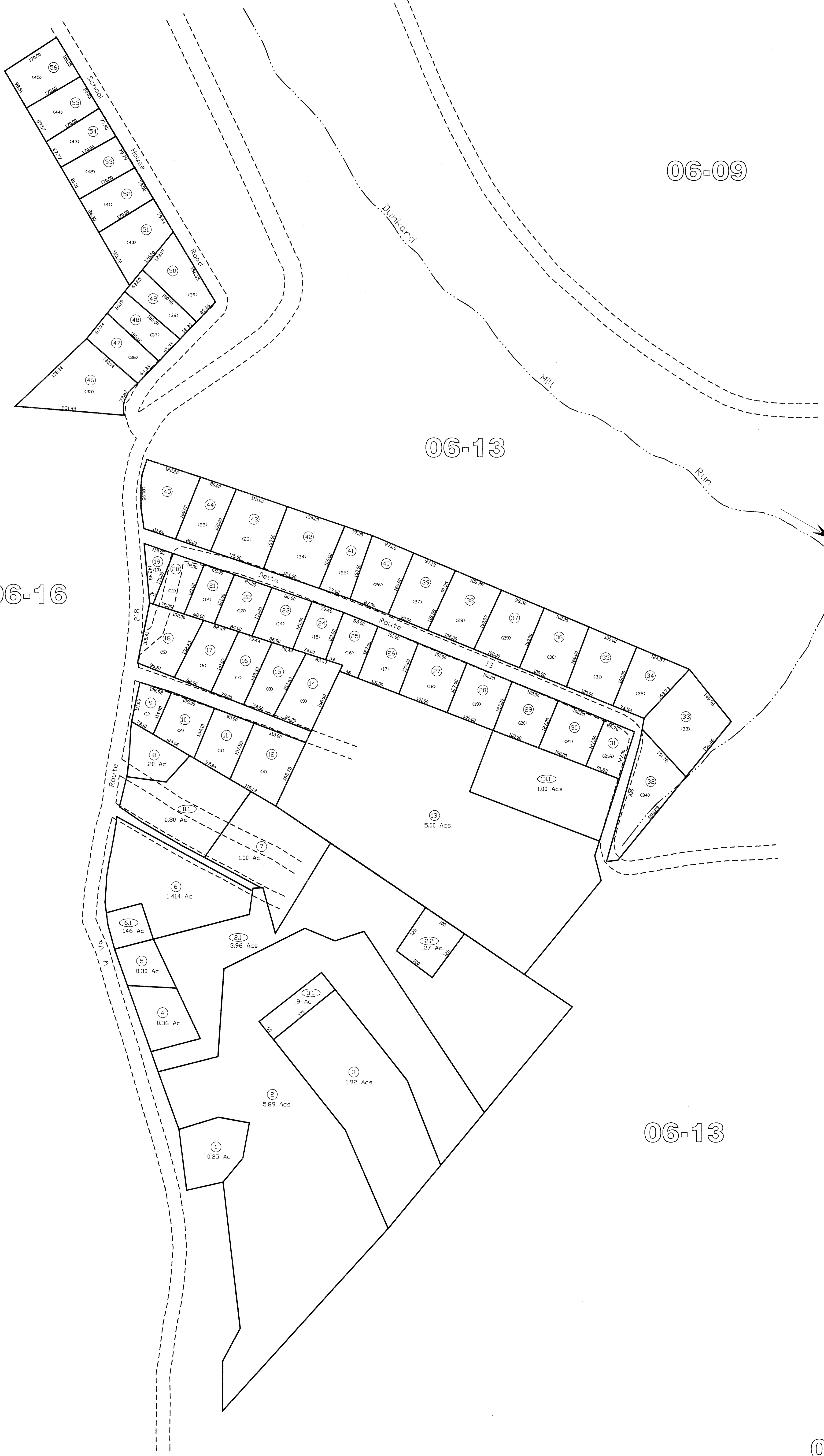
06-09

06-13

06-16

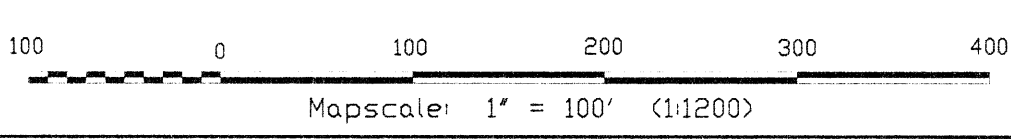
06-13

01-12



Lincoln District
06-08

All tax maps created under the provisions of reappraisal legislation are the property of the Marion County Reappraisal Program and the reproduction, copying, distribution or sale of such maps or any copies thereof without the written permission of the Marion County Assessor is prohibited by law. 03-14



LEGEND

Property Line	Original Lot Line
Edge of roadway	Lot number
Corporation Line	Tax Parcel Number
Hydrography	

**Office of the
Marion County Assessor**
James P. Priesler, Assessor

Revision History	
Mapper	Date
NEW MAP TN	FEBRUARY, 2002

Lincoln District
06-08