

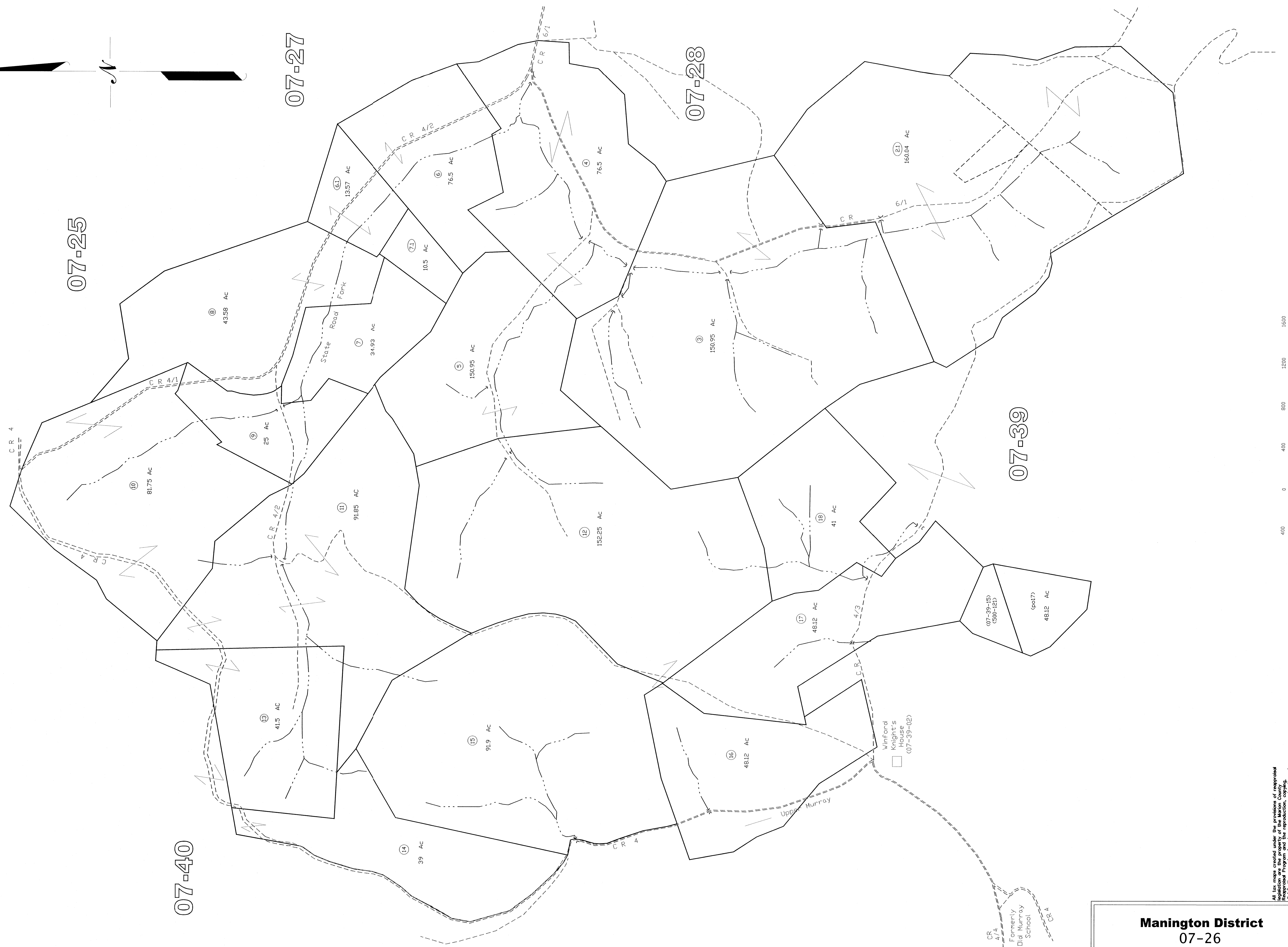
07-25

07-27

07-28

07-39

07-40



All lot maps created under the provisions of legislation are the property of the Marion County Assessor's Office. No warranty is made as to the accuracy of the information shown on this map. The existence of state tax liens and the Marion County Assessor's Office assume no liability for any errors or omissions on this document.

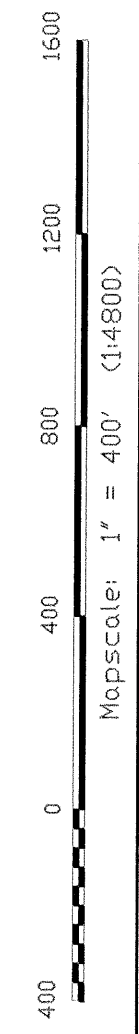
THIS DOCUMENT IS A TAX MAP. It was compiled for purposes of taxation from survey plat. The existence of state tax liens and the Marion County Assessor's Office assume no liability for any errors or omissions on this document.

LEGEND

Property Line	Original Lot Line
Edge of roadway	Lot number
Corporation Line	Tax Parcel Number
Hydrography	Railroad

Office of the Marion County Assessor James P. Prosser, Assessor

Revision	Reviser	History	Date
1	NEW MAP	TN	JUNE, 2002
2	NEW MAP	JN	JUNE, 2004
3	NEW MAP	TRN	AUGUST, 2005
4			
5			



Manington District 07-26

Manington District 07-26