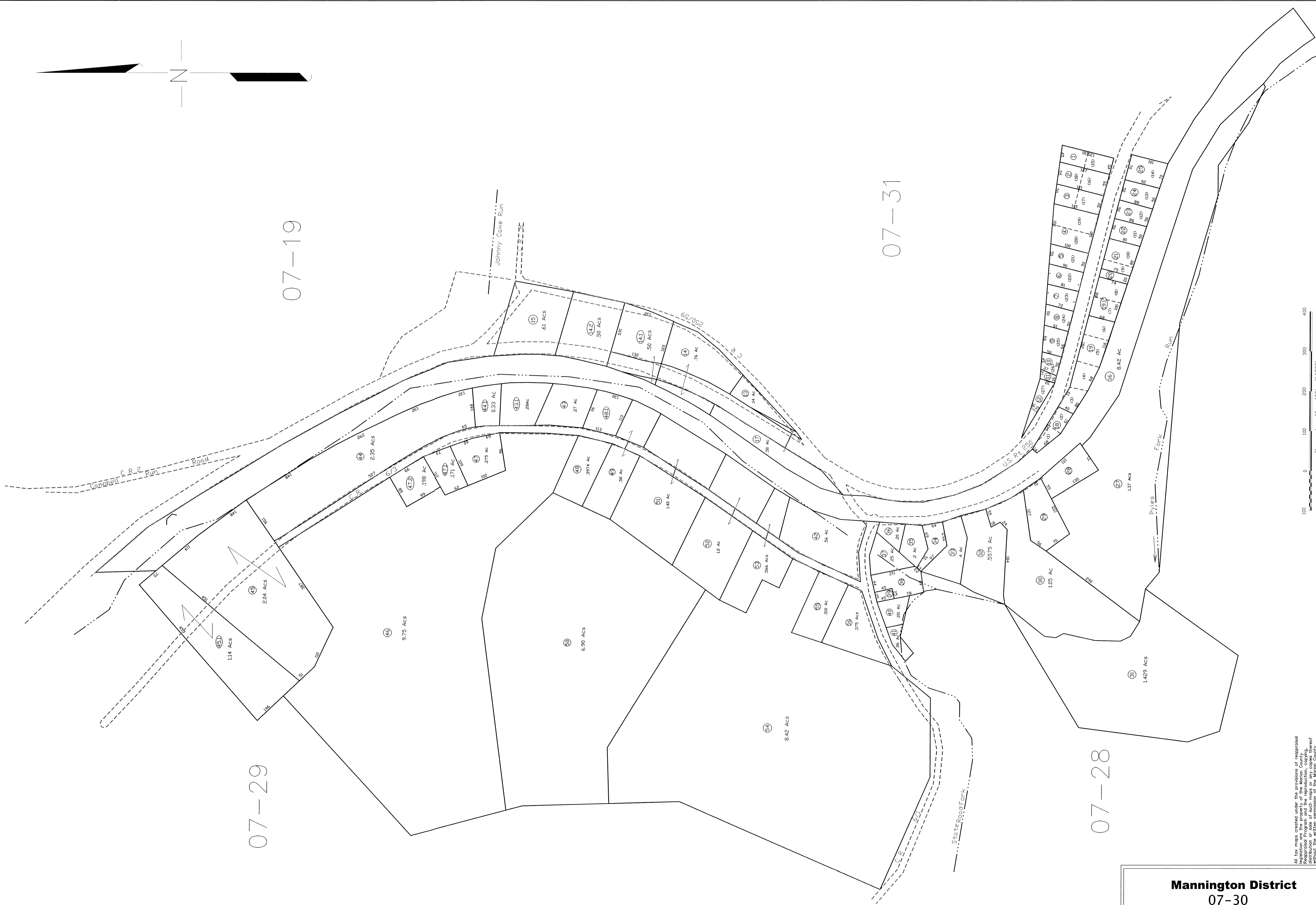


07-19

07-31

07-29

07-28



THIS DOCUMENT IS A TAX MAP. It was compiled for purposes of taxation from survey plat. The existence of data on this map does not imply any official status to such data. The WV State Tax Dept. and the Marion County Assessor's Office assume no liability for any errors that may appear in this document.

**Mannington District**  
07-30

**LEGEND**

- Property Line
- Edge of roadway
- Cooperation Line
- Hypography
- Original Lot Line
- Lot number
- Tax Parcel Number
- Railroad

Office of the  
**Marion County Assessor**  
James P. Pincator, Assessor

REVISION	HISTORY
1	NEW MAP
2	NEW MAP
3	NEW MAP
4	NEW MAP
5	NEW MAP

MAP SCALE: 1" = 100'

