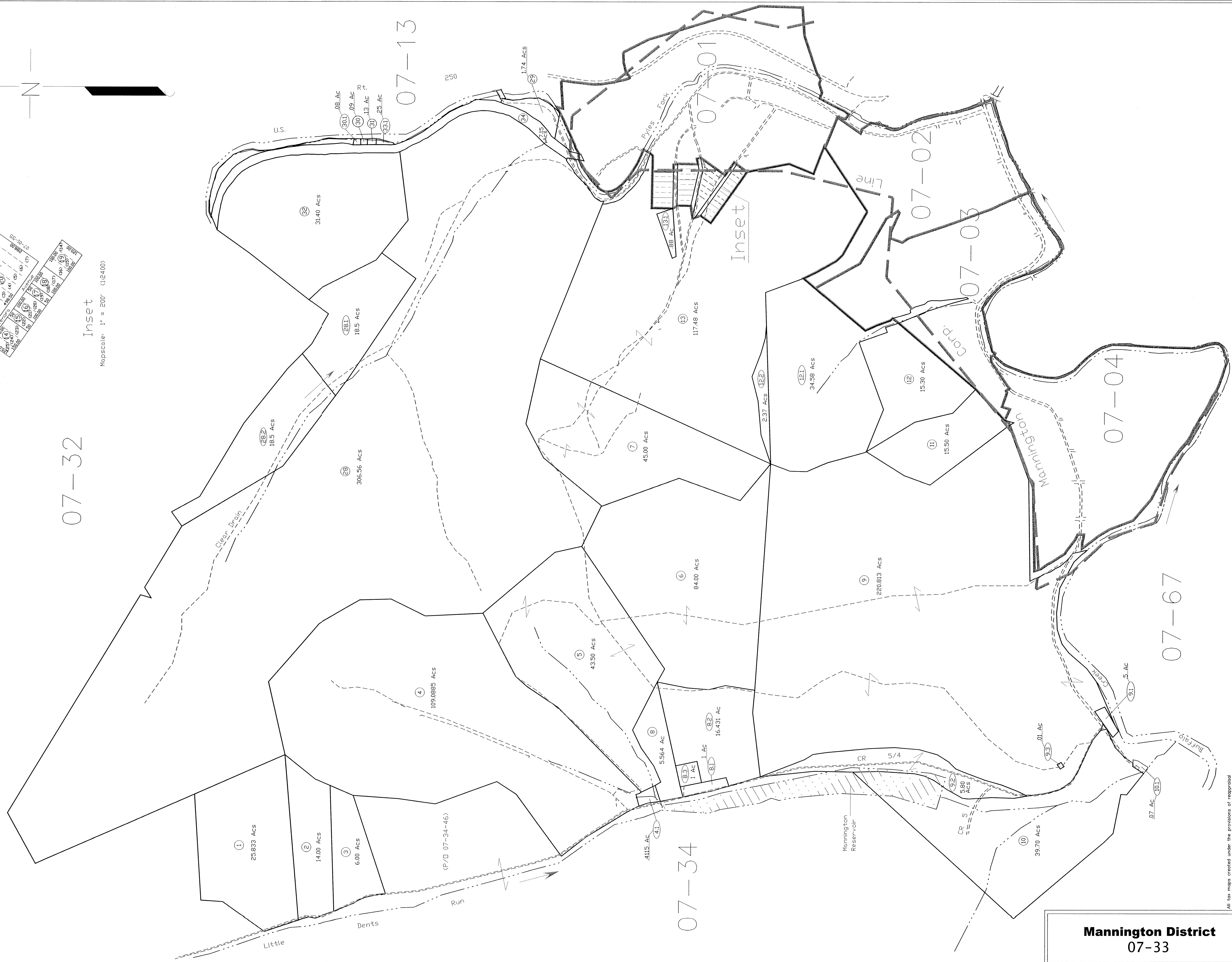


Inset  
Mapscale: 1" = 200' (1:2400)

07-32



All the maps created under the provisions of Appraisal Repeal are the property of the Marion County Reappraisal Program and the reproduction, copying, or distribution of such maps without the written permission of the Marion County Assessor is prohibited by law. 03-14

THIS DOCUMENT IS A TAX MAP. It was compiled for purposes of taxation from available record evidence and has not been field verified. It is not a valid legal document. The WV State Tax Dept. and the Marion County Assessor's Office assume no liability that might result from use of this document.

LEGEND

Property Line	Original Lot Line
Corporation Line	Lot Number
Hydrography	Tax Parcel Number

Office of the  
Marion County Assessor  
*James P. Pridemore, Assessor*

Revision	History	Date
1	NEW MAP	JANUARY, 2002
2	NEW MAP TRN	AUGUST, 2005
3		
4		
5		

Mannington District  
07-33

**Mannington District**  
07-33

