

07-48

07-47

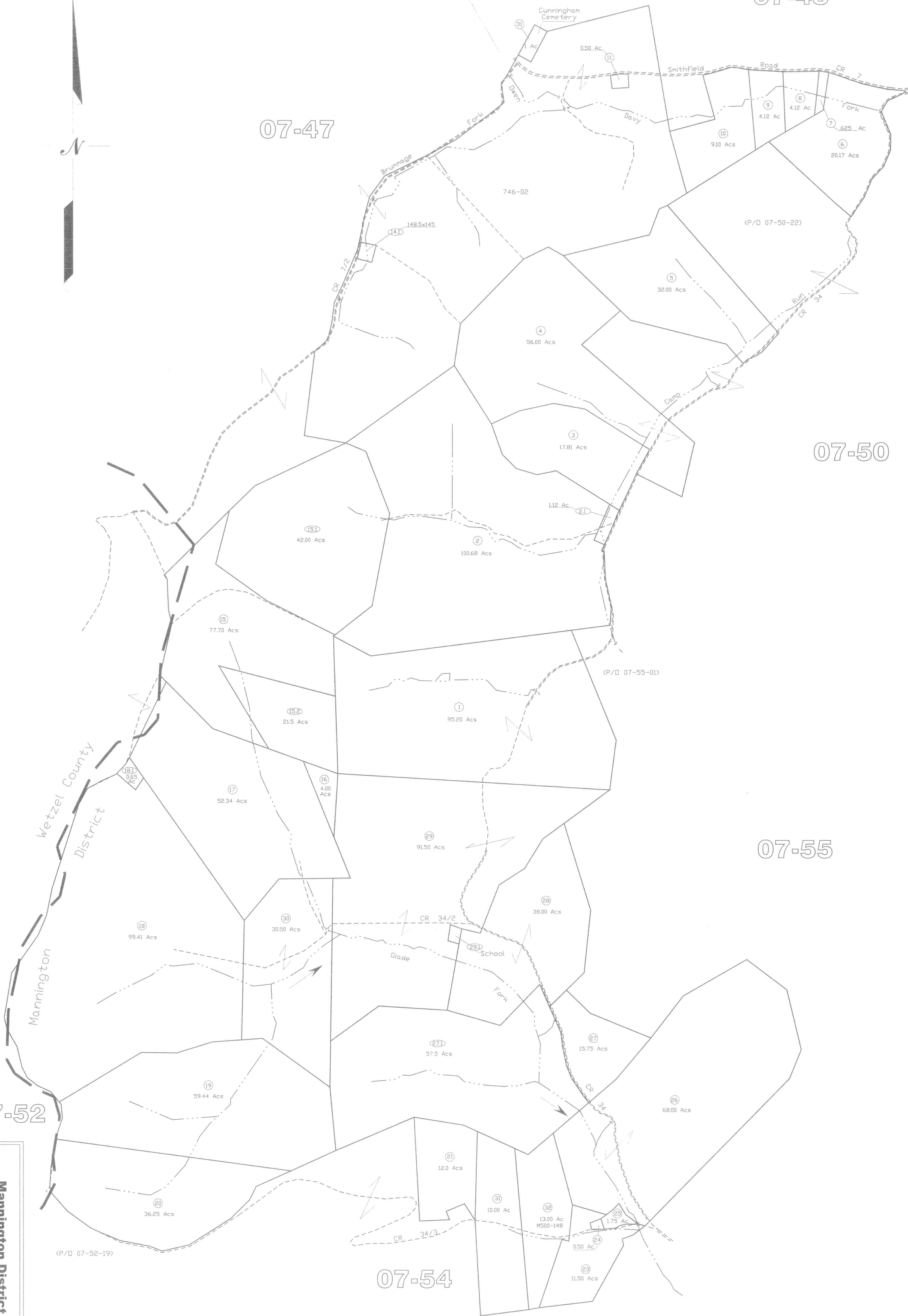
07-50

07-55

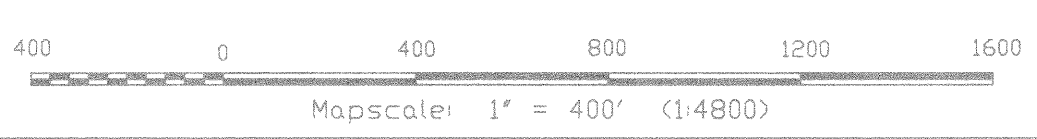
07-52

07-54

Mannington District
07-51



All tax maps created under the provisions of reappraisal legislation are the property of the Marion County Reappraisal Program and the reproduction, copying, distribution or sale of such maps or any copies thereof without the written permission of the Marion County Assessor is prohibited by law. 03-14



LEGEND

Property Line	-----	Original Lot Line	-----
Edge of roadway	-----	Lot number	①
County Line	-----	Tax Parcel Number	①②③
Hydrography	~~~~~	Railroad	

**Office of the
Marion County Assessor**
James P. Priester, Assessor

Revision	History
Mapper	Date
NEW MAP TN	JANUARY, 2002
NEW MAP TN	NOVEMBER, 2003

Mannington District
07-51