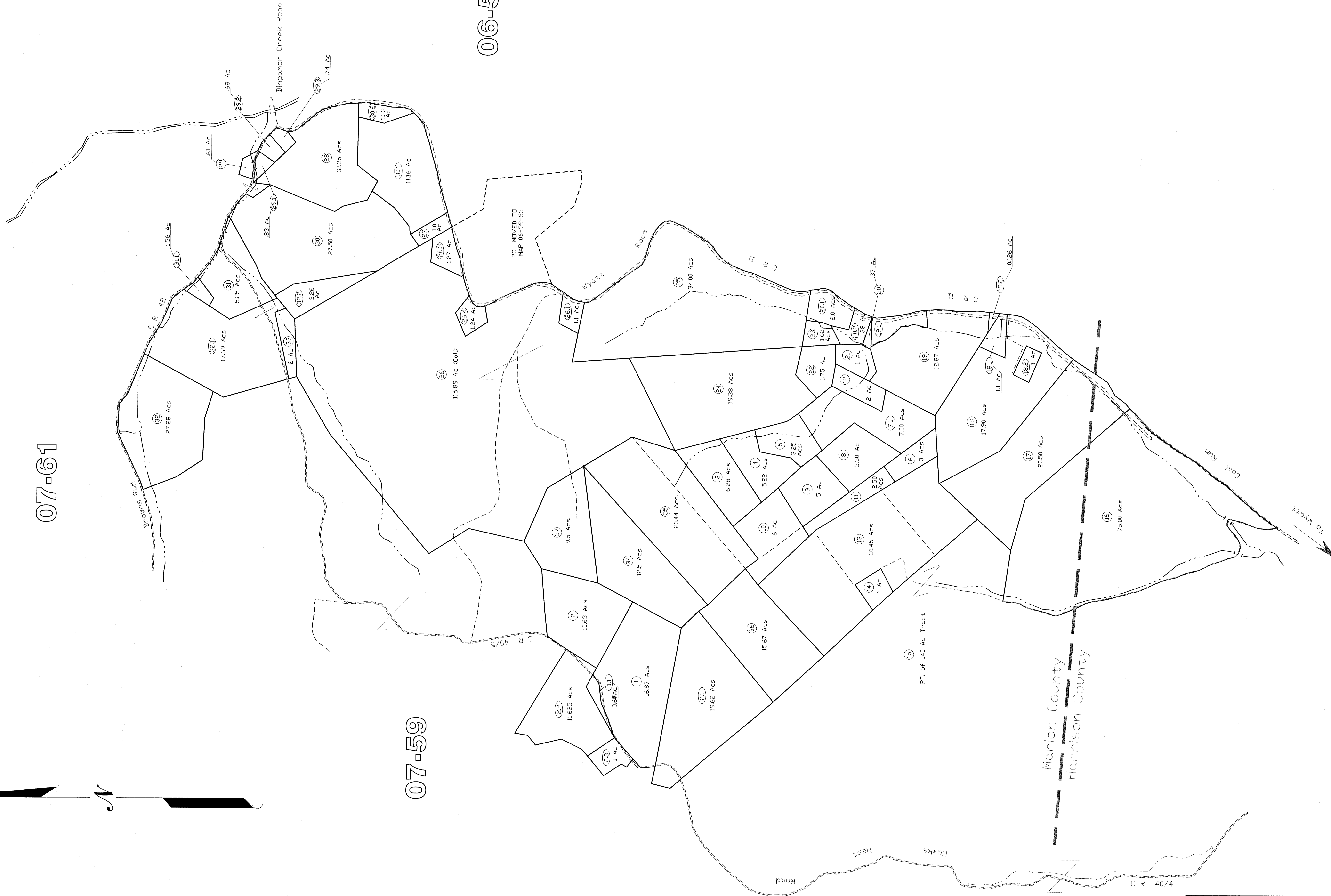




07-61



06-59

07-59

All tax maps created under the provisions of reopposed legislation are the property of the Marion County Assessor's Office. The existence of data on this map does not imply any official distribution or sale of such maps or any copies thereof. Assessor's Office assumes no liability that might result from use of this document. Assessor is prohibited by law, O.C.G. 19-2-1.

THIS DOCUMENT IS A TAX MAP. It was certified for purposes of transfer from available record evidence and has not been field verified. It is not to be used as a survey plat. The existence of data on this map does not imply any official distribution or sale of such maps or any copies thereof. Assessor's Office assumes no liability that might result from use of this document.

Property Line
County Line
Edge of roadway
Topography

Original Lot Line
Tax Parcel Number
Railroad

HHHHHHH
⑦

Office of the
Marion County Assessor
James P. Prosser, Assessor

Revision	Revised By	Date
1	NEW MAP	JANUARY, 2002
2	NEW MAP	NOVEMBER, 2003
3	NEW MAP	AUGUST, 2005
4		
5		

Mannington District
07-60

Mannington District
07-60

