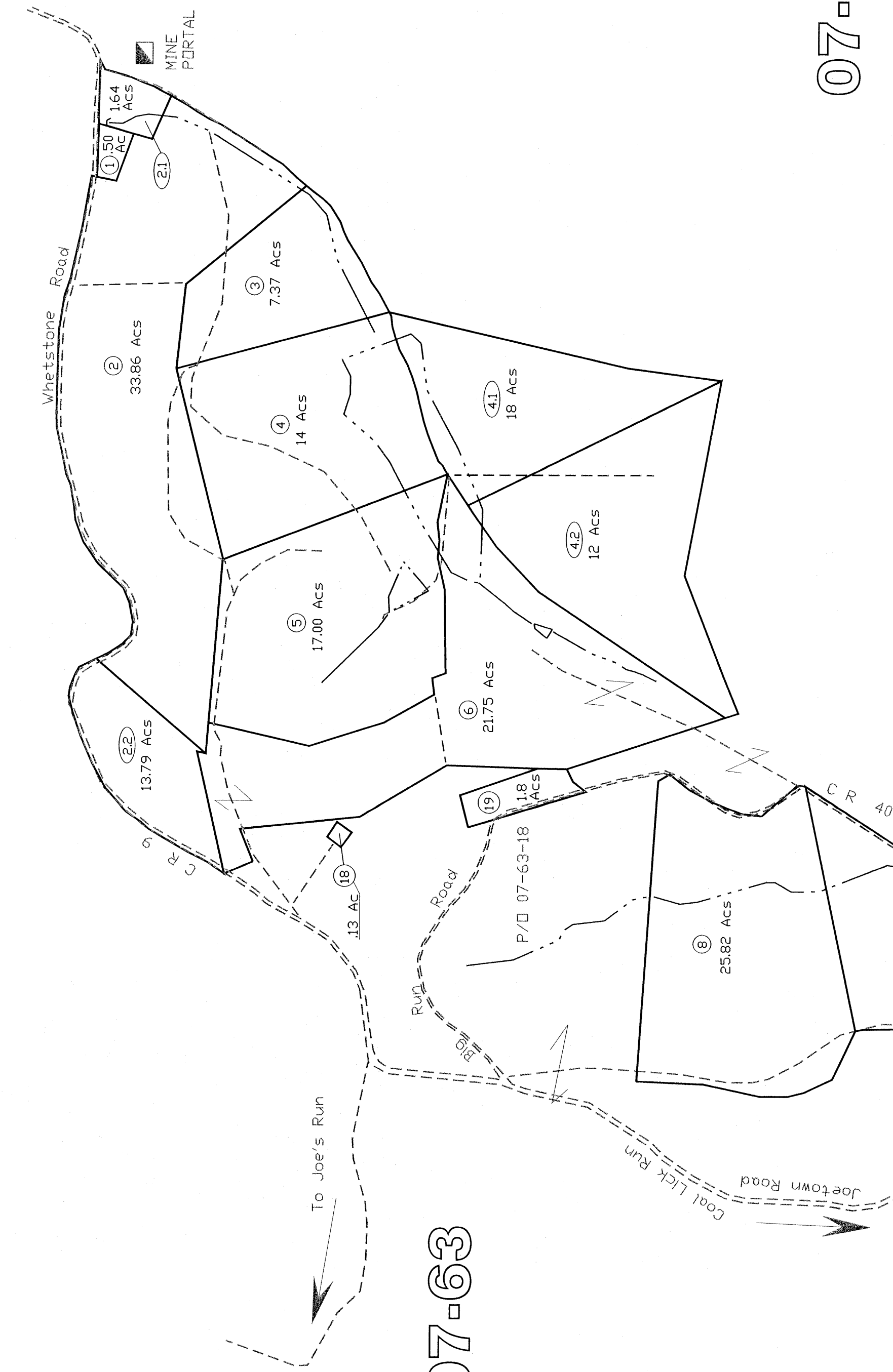
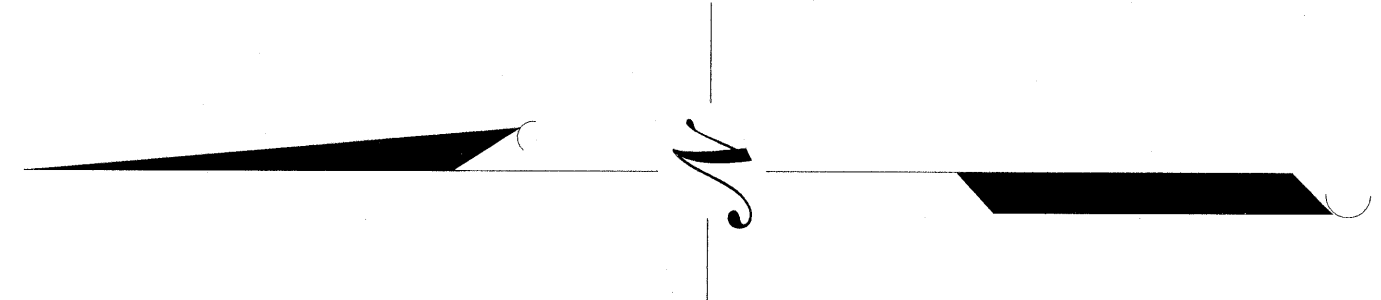
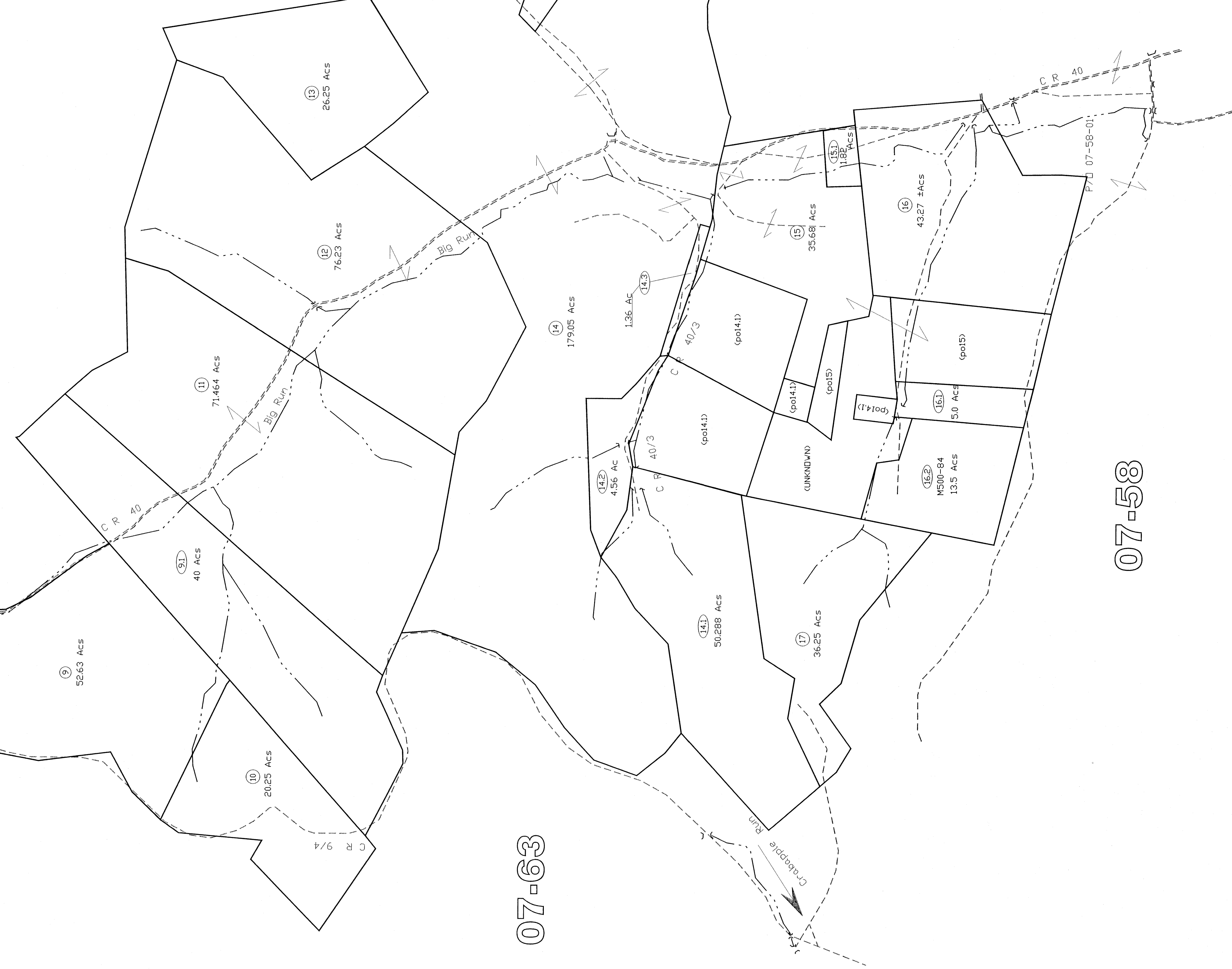


07-65



07-66

07-63



07-63

07-61

07-58

Mannington District
07-62

All tax maps created under the provisions of reapportionment are prepared by the Marion County Reapportionment Program and the distribution or sale of such maps or any copies thereof is prohibited by law. 07-14
THIS DOCUMENT IS A TAX MAP. It was compiled for purposes of levying taxes from available record evidence and has not been field verified. It is not a valid survey plat. The existence of state on this map does not imply any "official" status for any parcel. The Office of the Assessor's Office assume no liability that might result from use of this document.

Property Line
Edge of roadway
Hydrography
Railroad

Legend
Ordinal Lot Line
Lot number
Tax Parcel Number
Railroad

Office of the
Marion County Assessor
James P. Prosser, Assessor

Revision
No. 1
2
3
4
5

History
Date
Description
1. NEW MAP - AUGUST 17, 2002
2. NEW MAP - AUGUST 17, 2002
3. NEW MAP - AUGUST 17, 2002
4. NEW MAP - AUGUST 17, 2002
5. NEW MAP - AUGUST 17, 2002

