

05-02

05-09

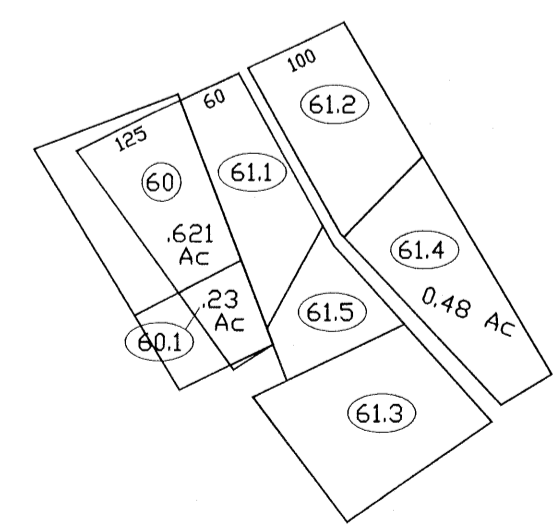
05-10A

05-13

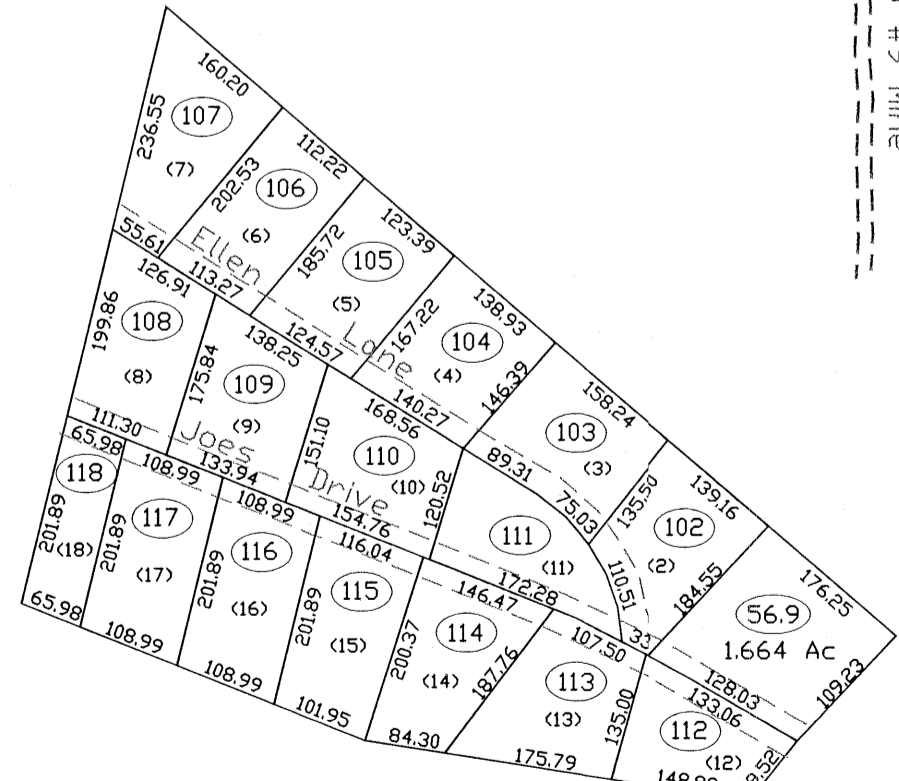
05-03

06-03

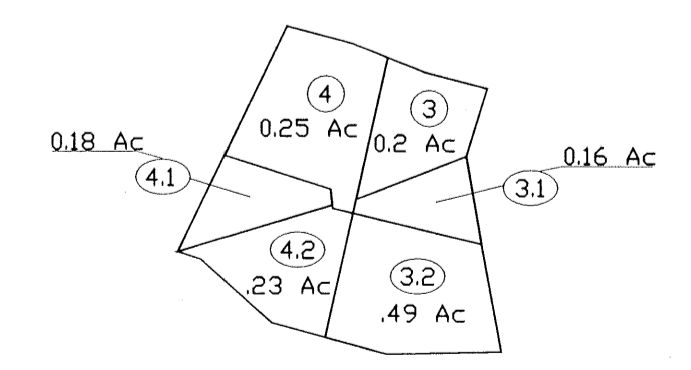
06-05



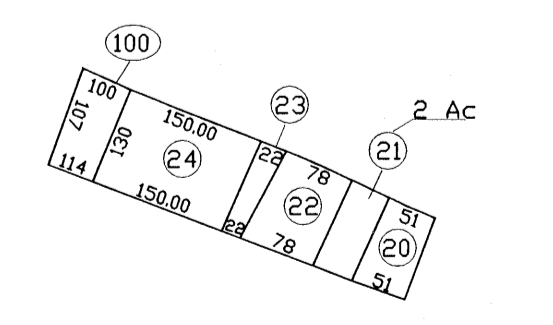
Inset 2
Mapscale: 1" = 200' (1:2400)



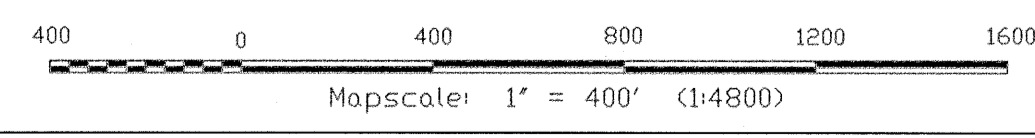
Inset 1
Mapscale: 1" = 200' (1:2400)



Inset 4
Mapscale: 1" = 200' (1:2400)



Inset 3
Mapscale: 1" = 200' (1:2400)



THIS DOCUMENT IS A TAX MAP. It was compiled for purposes of taxation from available record evidence and has not been field verified. It is not a valid survey plat. The existence of data on this map does not imply any "official" status to such data. The WV State Tax Dept. and the Marion County Assessor's Office assume no liability that might result from use of this document.

LEGEND

Property Line	—————	Original Lot Line	-----
Edge of roadway	-----	Lot number	(8)
Corporation Line	-----	Tax Parcel Number	(9)
Hydrography	~~~~~		

**Office of the
Marion County Assessor**
James P. Priestler, Assessor

Revision	History	Date
1	NEW MAP	MARCH, 2002
2	NEW MAP	NOVEMBER, 2003
3	NEW MAP	2004
4	NEW MAP	AUGUST, 2005

All tax maps created under the provisions of reappraisal legislation are the property of the Marion County Reappraisal Program and the reproduction, copying, distribution or sale of such maps or any copies thereof without the written permission of the Marion County Assessor is prohibited by law. 03-14

Paw Paw District
05-10