

05-16

05-13

05-12

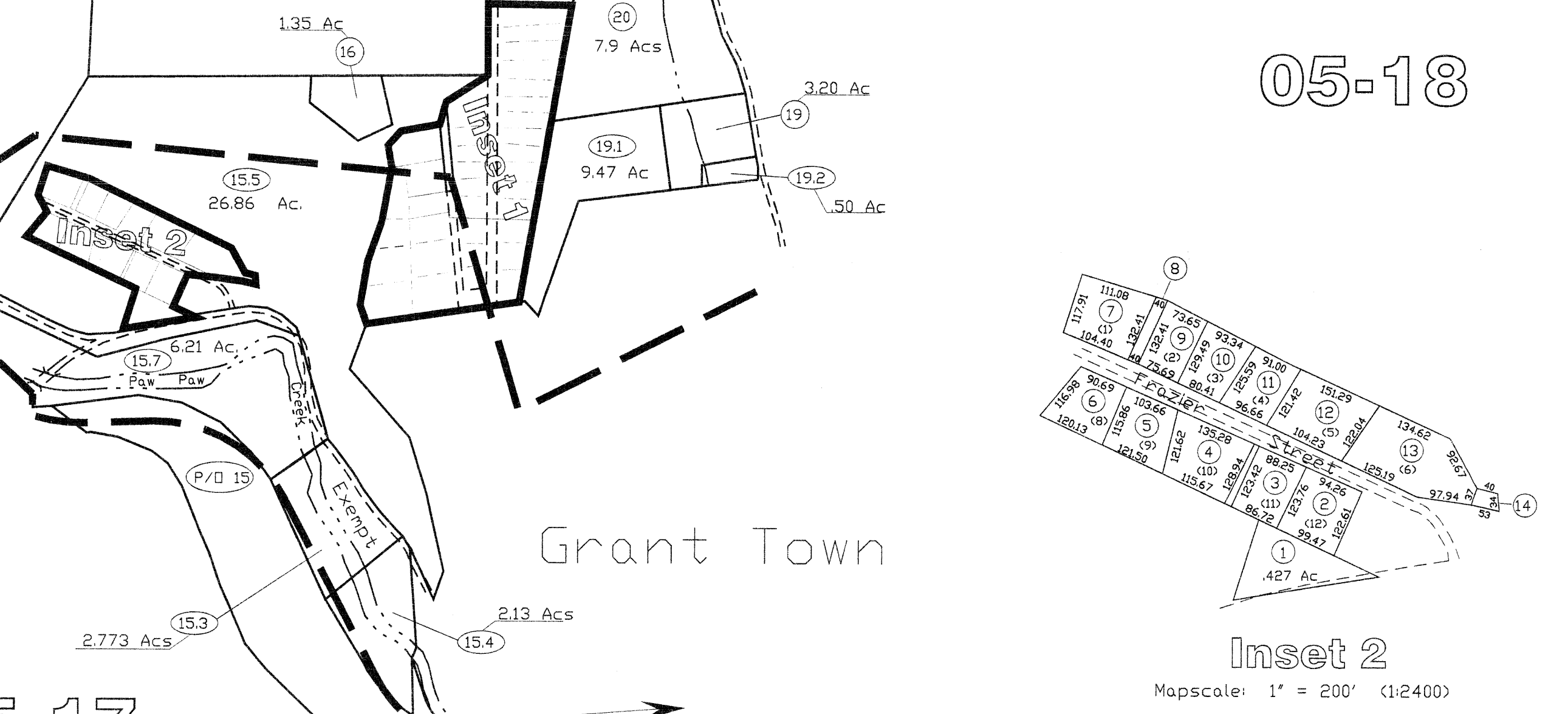
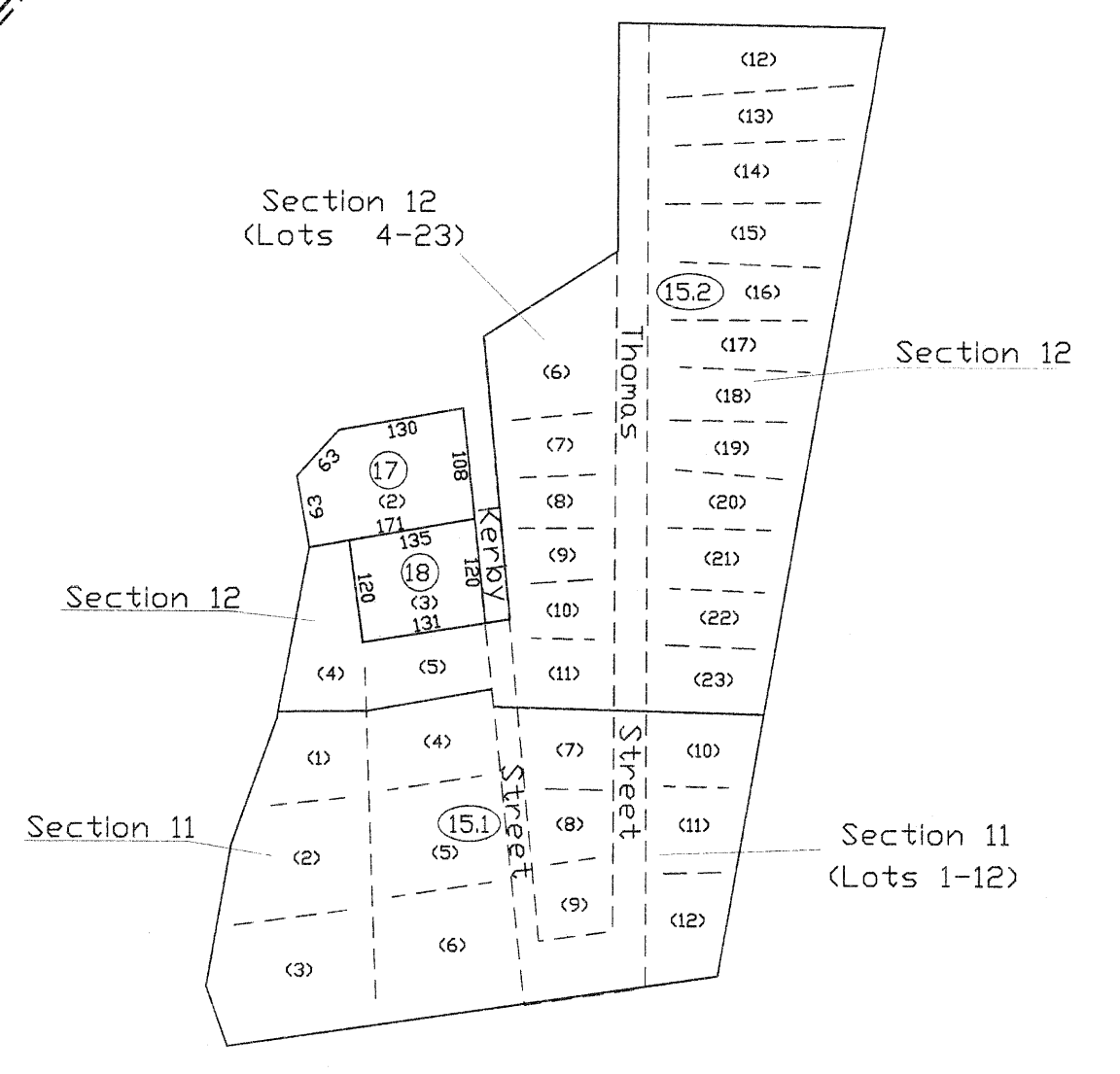
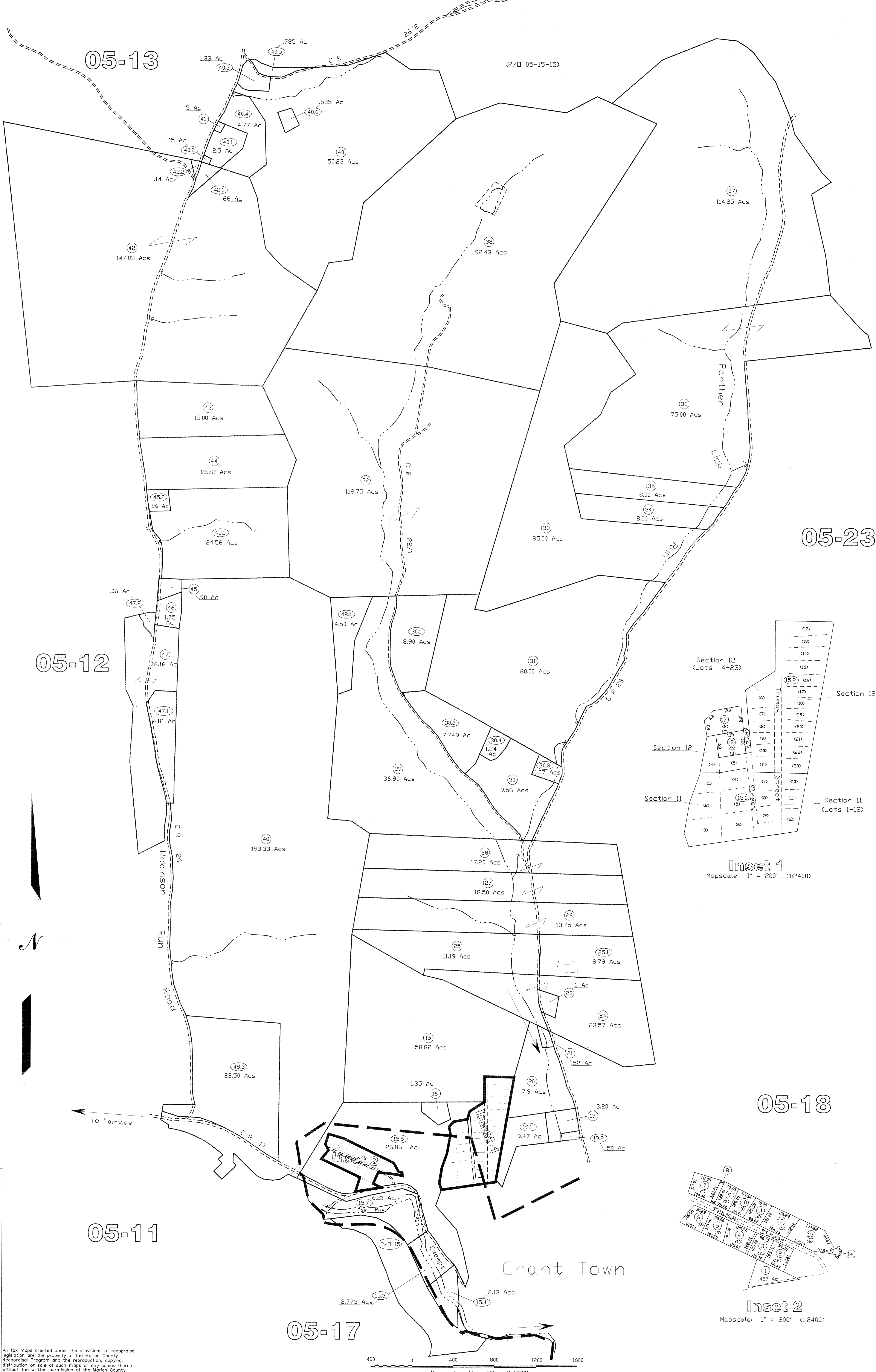
05-11

05-17

05-23

05-18

Paw Paw District
05-16



All tax maps created under the provisions of reappraisal legislation are the property of the Marion County Reappraisal Program and the reproduction, copying, distribution or sale of such maps or any copies thereof without the written permission of the Marion County Assessor is prohibited by law. 05-16

Mapscale: 1" = 400' (1:4800)

LEGEND

Property Line	-----	Original Lot Line	-----
Edge of roadway	-----	Lot number	##
Corporation Line	-----	Tax Parcel Number	17
Hydrography	-----		

**Office of the
Marion County Assessor**
James P. Priesler, Assessor

Revision History	
Revision	Date
1	NEW MAP TN MARCH, 2002
2	NEW MAP JT 2004
3	
4	
5	

Paw Paw District
05-16