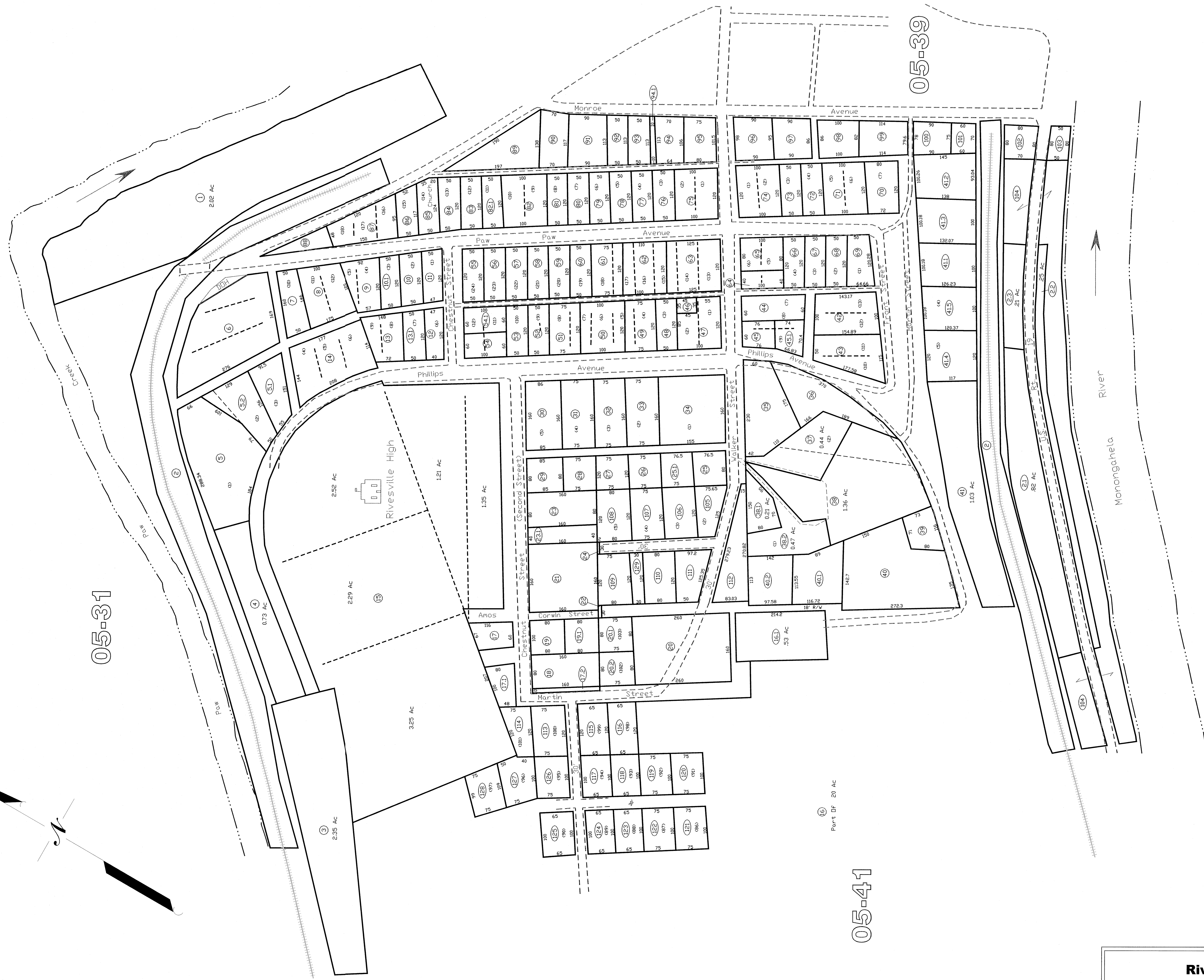


05-31

05-39

05-41

Rivesville
05-40



All tax maps created under the provisions of approved legislation are the property of the Marion County Assessor's Office and the reproduction, copying, or distribution of such maps without the written permission of the Marion County Assessor is prohibited by law. 03-14

THIS DOCUMENT IS A TAX MAP. It was compiled for purposes of taxation, from the records of the State of Maryland, and is not a legal document. It is not a substitute for a deed or other legal instrument. The existence of state or federal liens or other claims against the property shown on this map does not constitute an endorsement or approval by the Assessor's Office. The Assessor's Office assumes no liability for any errors or omissions in this document.

LEGEND

Property Line	Original Lot Line
County Boundary	Lot number
Corporation Line	Tax Parcel Number
Hydrography	Railroad

Office of the
Marion County Assessor
James P. Priddy, Assessor

Revision	History	Date
1	NEW MAP	FEBRUARY, 2002
2	NEW MAP	NOVEMBER, 2003
3	NEW MAP	JULY, 2004
4	NEW MAP	AUGUST, 2005

Rivesville
05-40