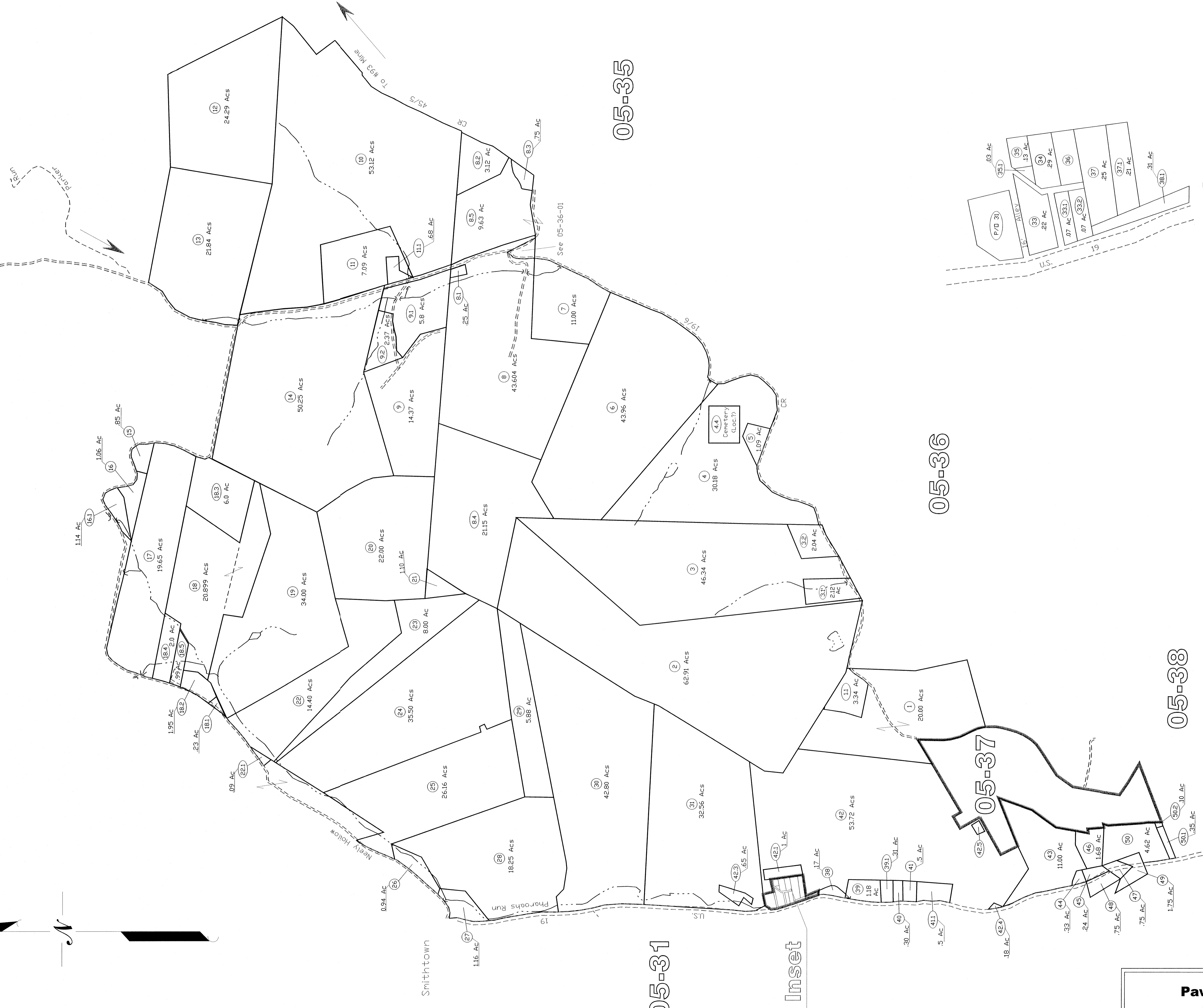


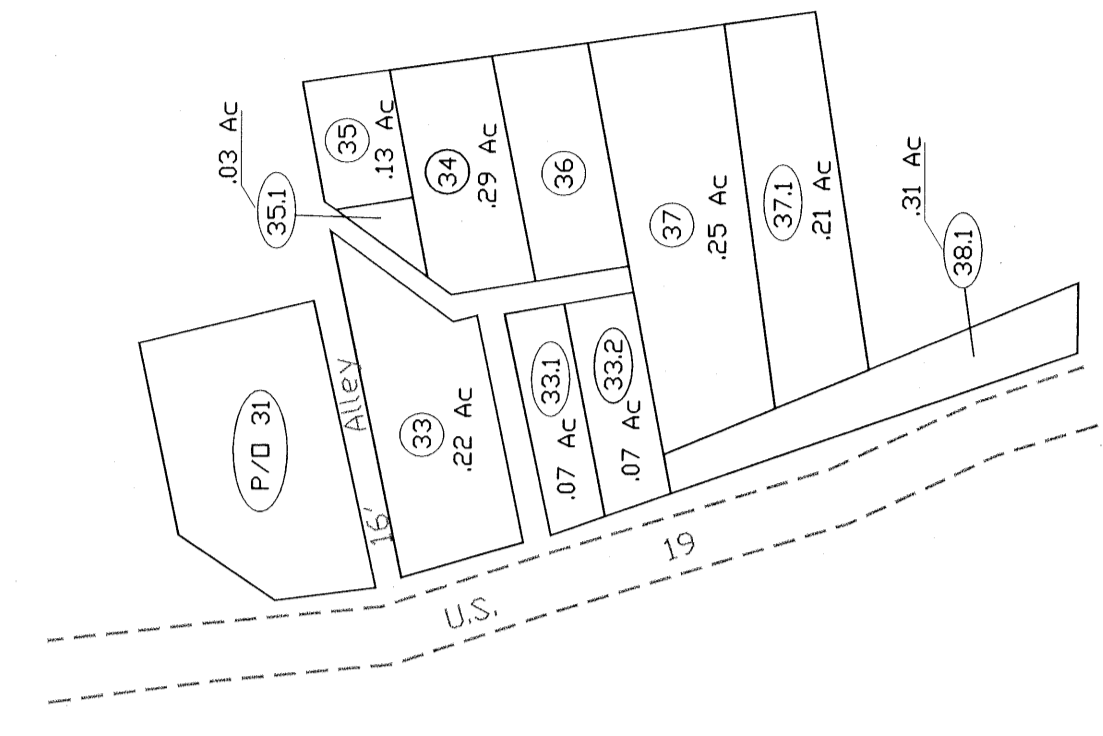
05-33



Paw Paw District
05-34

Inset

Mapscale: 1" = 100' (1:1200)



All tax maps created under the provisions of reauthorized legislation are the property of the Marion County Reappraisal Program and the reproduction, copying, or distribution of such data, the WV State Tax Dept. and the Marion County Assessor's Office assume no liability that might result from use of this document.

THIS DOCUMENT IS A TAX MAP. It was compiled for purposes of taxation from survey plat. The existence of state on this map does not imply an official status to such data. The WV State Tax Dept. and the Marion County Assessor's Office assume no liability that might result from use of this document.

LEGEND

Property Line	---
Waterway	~~~~~
Corporation Line	---
Hydrography	~~~~~
Original Lot Line	---
Lot number	(#)
Tax Parcel Number	(17)

Office of the
Marion County Assessor
James P. Prosser, Assessor

REVISION	REVISION	DATE
1	NEW MAP	TN FEBRUARY, 2002
2	NEW MAP	JT 2004
3	NEW MAP	JT AUGUST, 2005
4		
5		

Paw Paw District
05-34

01-12