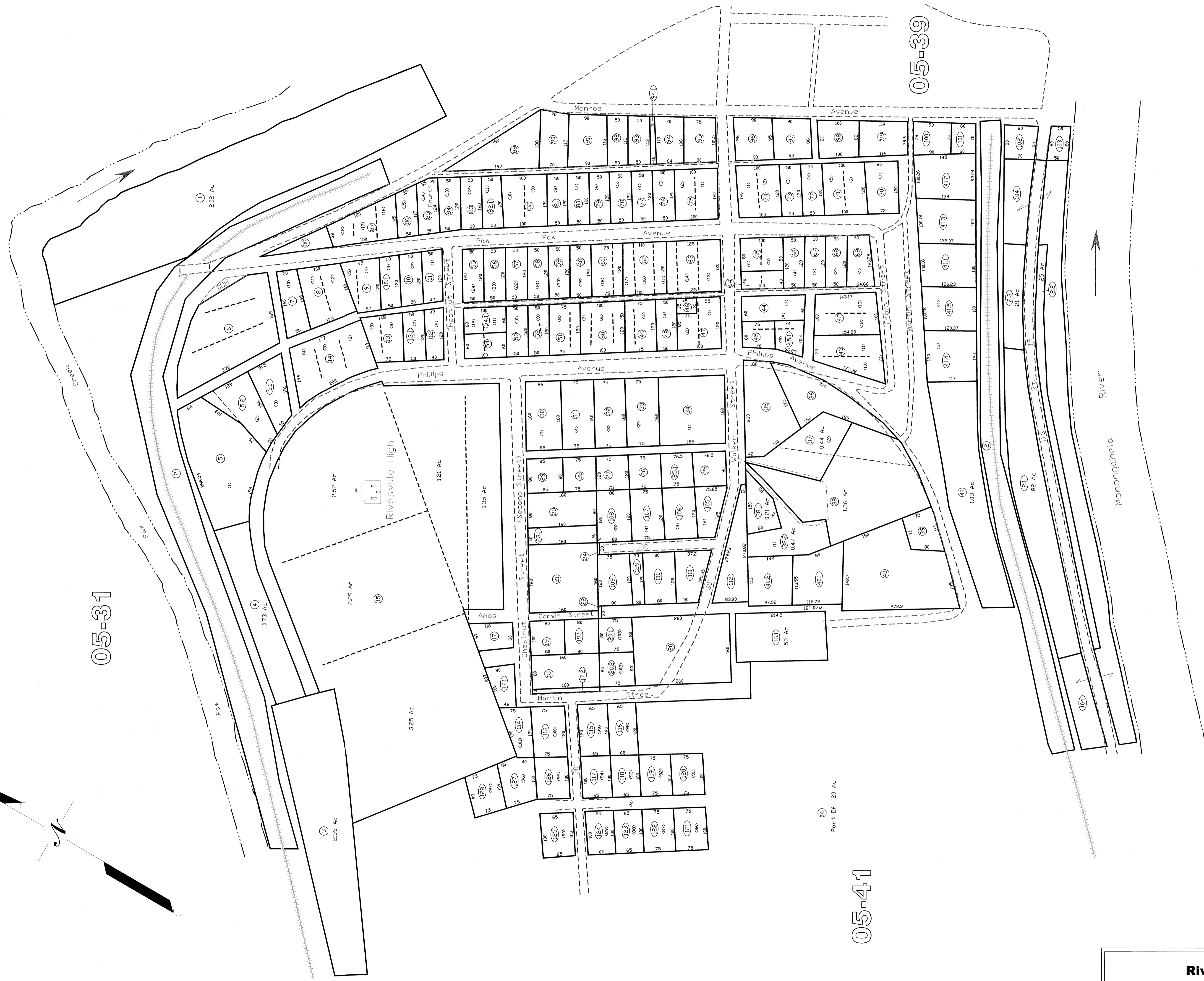


05-31



05-39

05-41

Part Df 20 Ac

Rivesville  
05-40

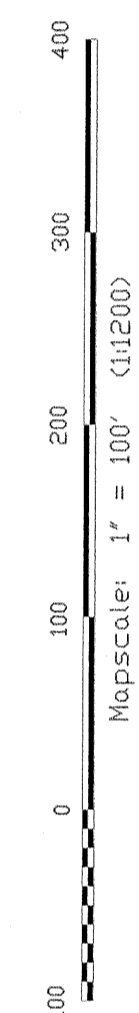
All tax maps created under the provisions of approved legislation are the property of the Marion County Assessor's Office and the reproduction, copying, or distribution of such data without the written permission of the Marion County Assessor is prohibited by law. 03-14

THIS DOCUMENT IS A TAX MAP. It was compiled for purposes of taxation, from the original lot lines and is not a legal document. It is not a substitute for a deed or other legal instrument. The existence of state or federal liens or other claims against the property shown on this map does not constitute an endorsement or approval by the Marion County Assessor's Office. The Marion County Assessor's Office assumes no liability for any errors or omissions in this document.

LEGEND

- Property Line
- Original Lot Line
- Lot number
- Tax Parcel Number
- Hydrography
- Railroad

Scale: 1" = 100' (11/20/03)



Office of the  
Marion County Assessor  
James P. Priddy, Assessor

Revision	Date	History
1	FEBRUARY, 2002	NEW MAP
2	NOVEMBER, 2003	NEW MAP
3	JULY, 2004	NEW MAP
4	AUGUST, 2005	NEW MAP