

01-07

02-02

03-13

03-12

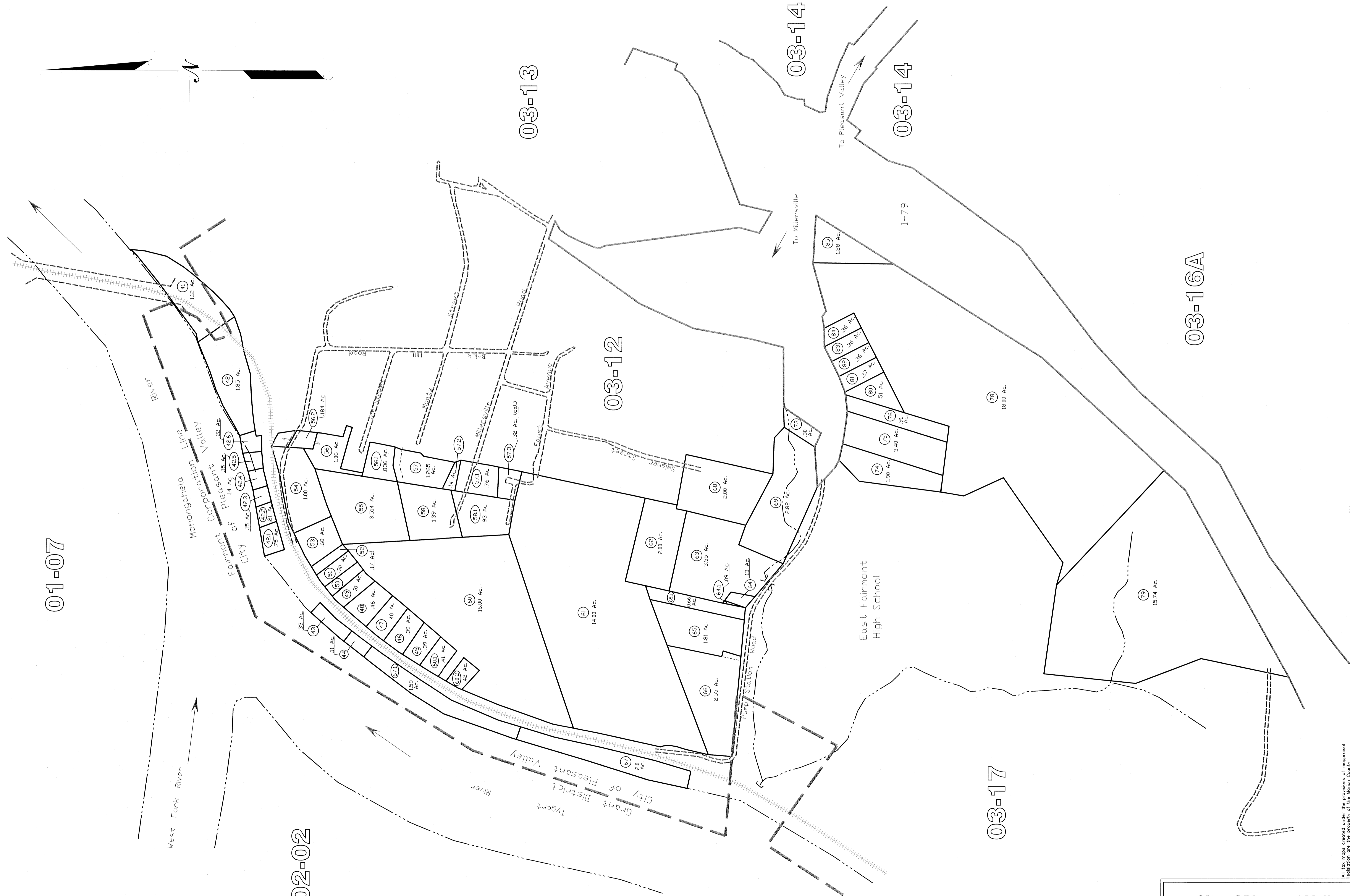
03-14

03-14

03-17

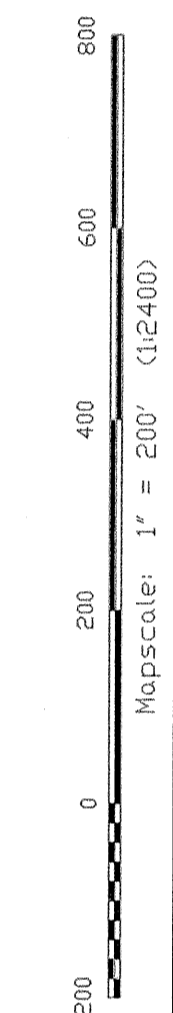
03-16A

City of Pleasant Valley  
03-11A



THIS DOCUMENT IS A TAX MAP. It was compiled for purposes of taxation from survey plat. The existence of data on this map does not imply any "official" status to such data. The WV State Tax Dept. and the Marion County Assessor's Office assume no liability that might result from use of this document.

All tax maps created under the provisions of regional legislation are the property of the Marion County Assessor's Office. The reproduction, copying, distribution, or use of any part of this map without the written permission of the Marion County Assessor is prohibited by law. 03-11A



**LEGEND**

- Property Line
- Edge of roadway
- Corporation Line
- Hydrography
- Original Lot Line
- Lot number
- Tax Parcel Number
- Railroad

**Office of the  
Marion County Assessor**  
*James P. Priecker, Assessor*

Revision	History
1	NEW MAP - TN
2	NEW MAP - VMS
3	NEW MAP - VMS
4	NEW MAP - VMS
5	NEW MAP - VMS

**City of Pleasant Valley**  
03-11A