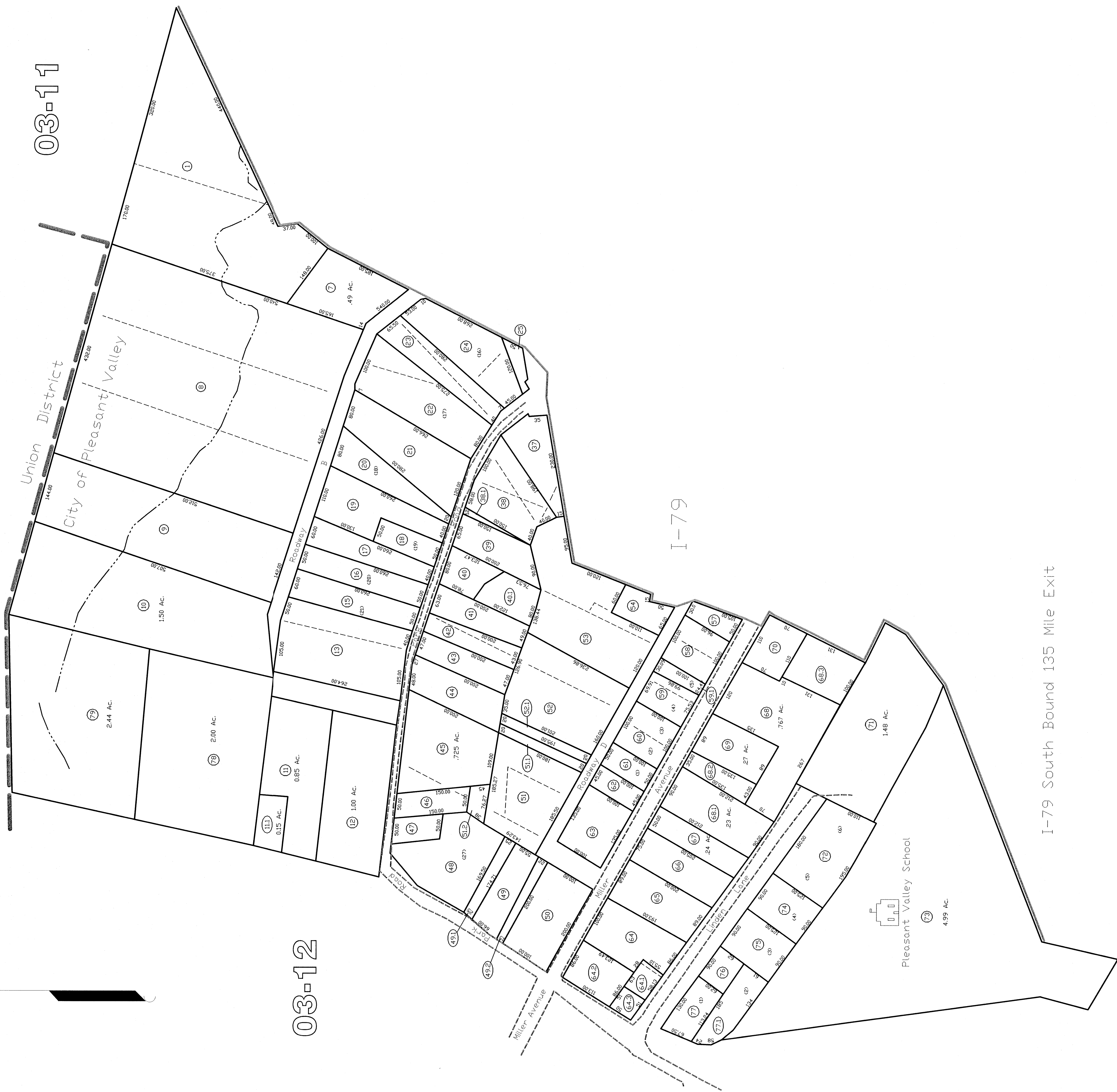


03-11-01



03-11

03-12

I-79

I-79 South Bound 135 Mile Exit

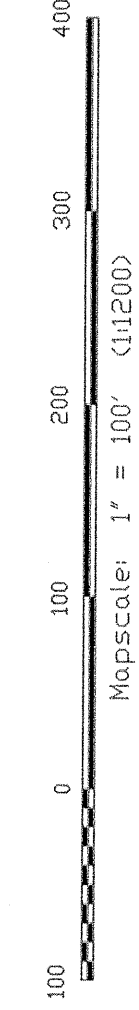
City of Pleasant Valley  
03-13

All tax maps created under the provisions of reprobated legislation are the property of the Marion County Assessor's Office. The existence of data on this map does not imply any official status to such data. The WV State Tax Dept. and the Marion County Assessor's Office assume no liability that might result from use of this document. Assessor is prohibited by law, 03-14

THIS DOCUMENT IS A TAX MAP. It was compiled for purposes of taxation from survey plat. The existence of data on this map does not imply any official status to such data. The WV State Tax Dept. and the Marion County Assessor's Office assume no liability that might result from use of this document.

LEGEND

- Property Line
- Edge of roadway
- District Line
- Hydrography
- Original Lot Line
- Lot number
- Tax Parcel Number
- Railroad



Office of the  
Marion County Assessor  
James P. Prisker, Assessor

REVISION	HISTORY	DATE
1	NEW MAP	MARCH, 2002
2	NEW MAP	NOVEMBER, 2003
3	NEW MAP	JULY, 2004
4	NEW MAP	SEPTEMBER, 2005