

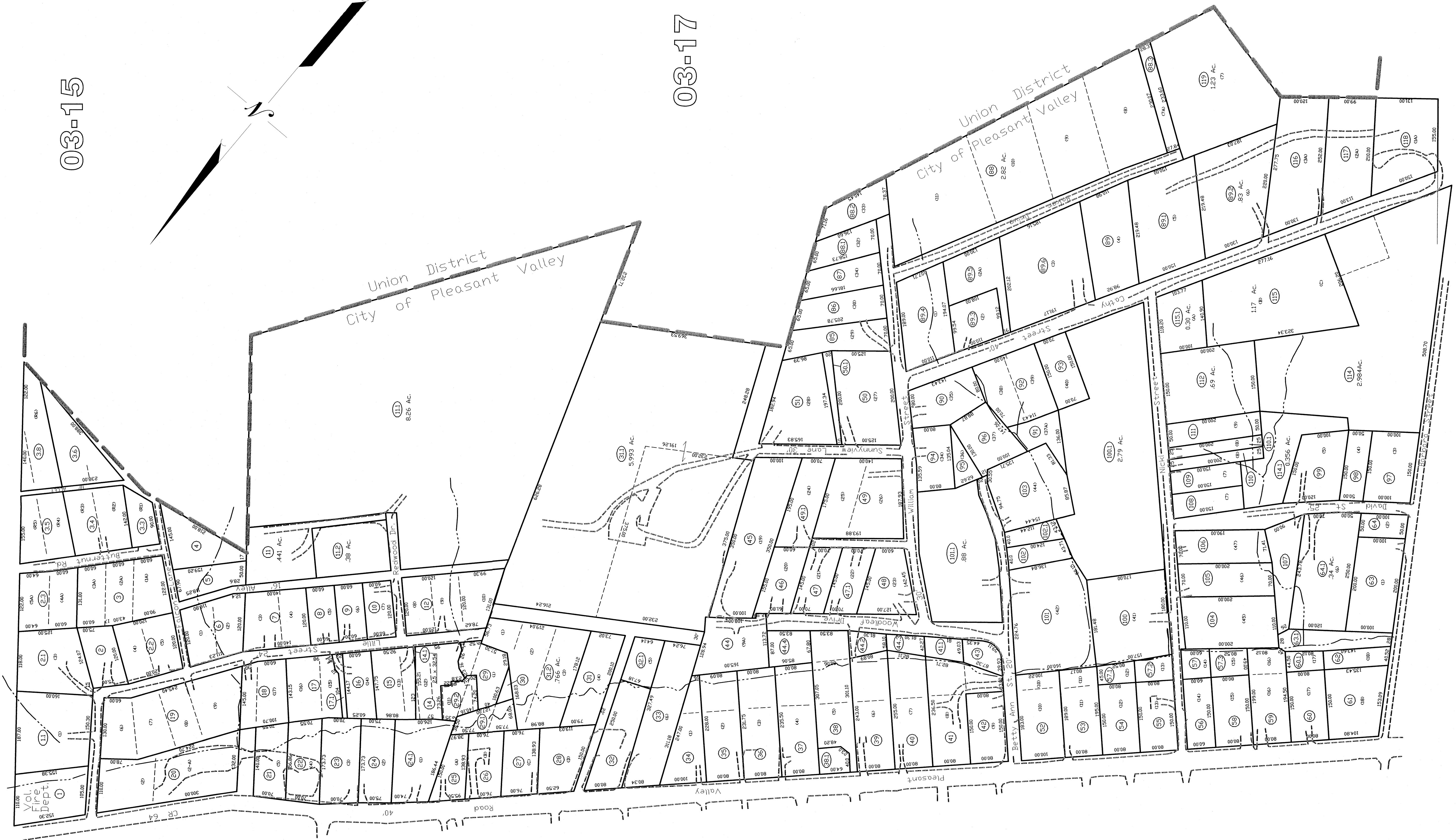
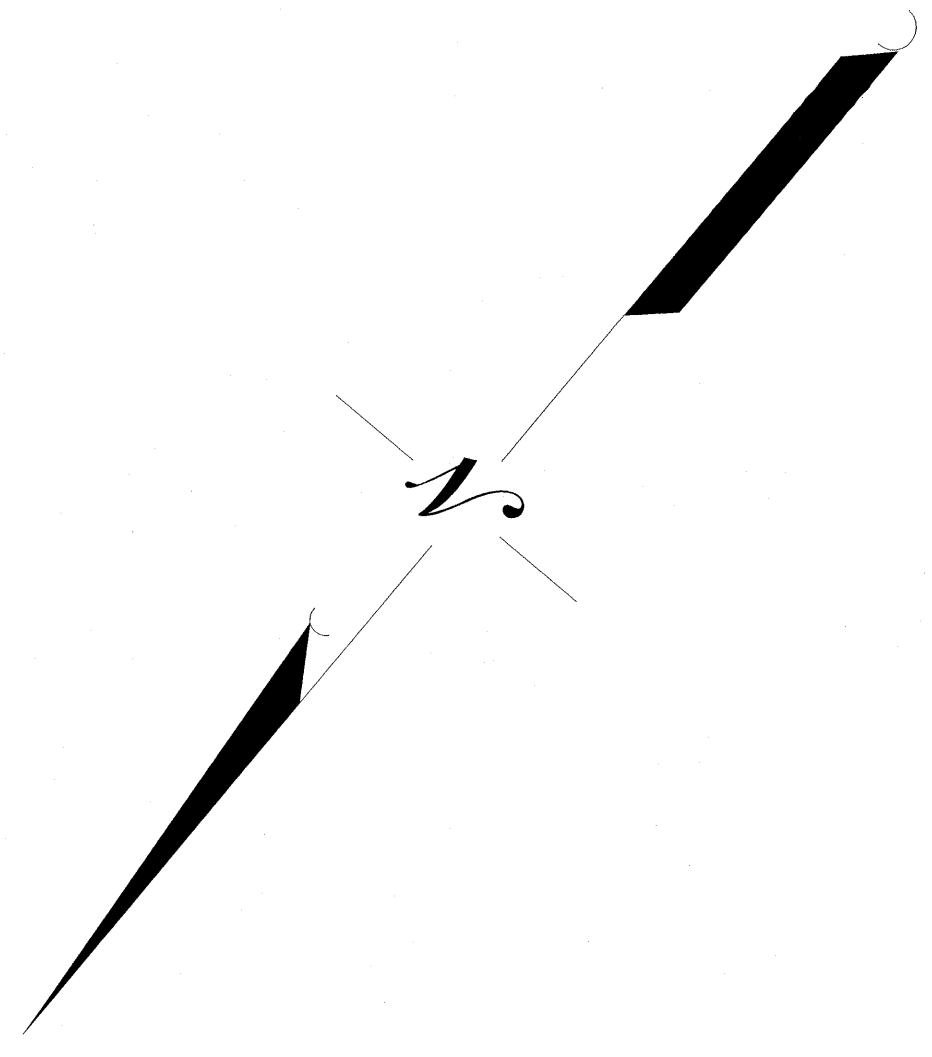
03-15

03-14

03-17

03-16A

03-17



City of Pleasant Valley
03-16

THIS DOCUMENT IS A TAX MAP. It was compiled for purposes of taxation from available record evidence and has not been field verified. It is not a valid legal instrument. The City of Pleasant Valley, Marion County, Oregon, is not responsible for such data. The NV State Tax Dept. and the Marion County Assessor's Office assume no liability that might result from use of this document.

LEGEND

Property Line	Original Lot Line
Edge of roadway	Lot number
District Line	Tax Parcel Number
Hydrography	Railroad

Office of the
Marion County Assessor
James P. Prindler, Assessor

REVISION	DATE	HISTORY
1	NEW MAP	MARCH, 2002
2	NEW MAP	NOVEMBER, 2003
3	NEW MAP	JULY, 2004
4	NEW MAP	SEPTEMBER, 2005

City of Pleasant Valley
03-16