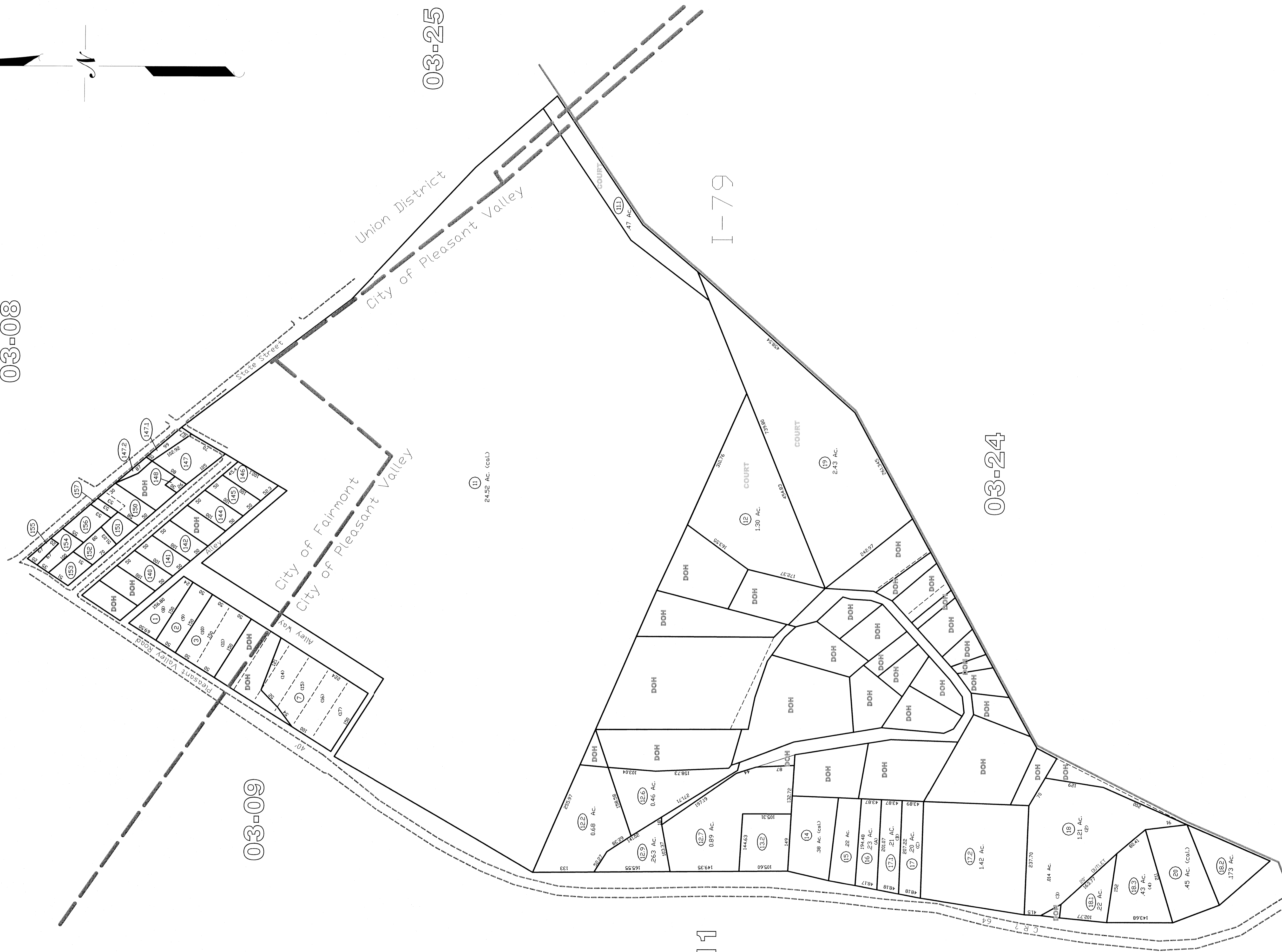


03-08



03-09

03-25

03-11

I-79

03-24

City of Pleasant Valley
03-24A

THIS DOCUMENT IS A TAX MAP. It was compiled for purposes of taxation from survey plat. The existence of data on this map does not imply any official status to such data. The WV State Tax Dept. and the Marion County Assessor's Office assume no liability for any errors or omissions that may appear hereof without the written permission of the Marion County Assessor's Office. Prepared by: Date: 03-14

Scale: 1" = 100' (1:1200)

LEGEND

Property Line	-----
Edge of roadway	-----
District Line	-----
Hydrography	-----
Original Lot Line	-----
Lot number	17
Tax Parcel Number	17
Railroad	-----

**Office of the
Marion County Assessor**
James P. Prosser, Assessor

Revision	History
1	NEW MAP TN MARCH, 2002
2	NEW MAP TN NOVEMBER, 2003
3	NEW MAP TN JUNE, 2004
4	NEW MAP VMS SEPTEMBER, 2005
5	

City of Pleasant Valley
03-24A