



03-25

03-24A

03-32

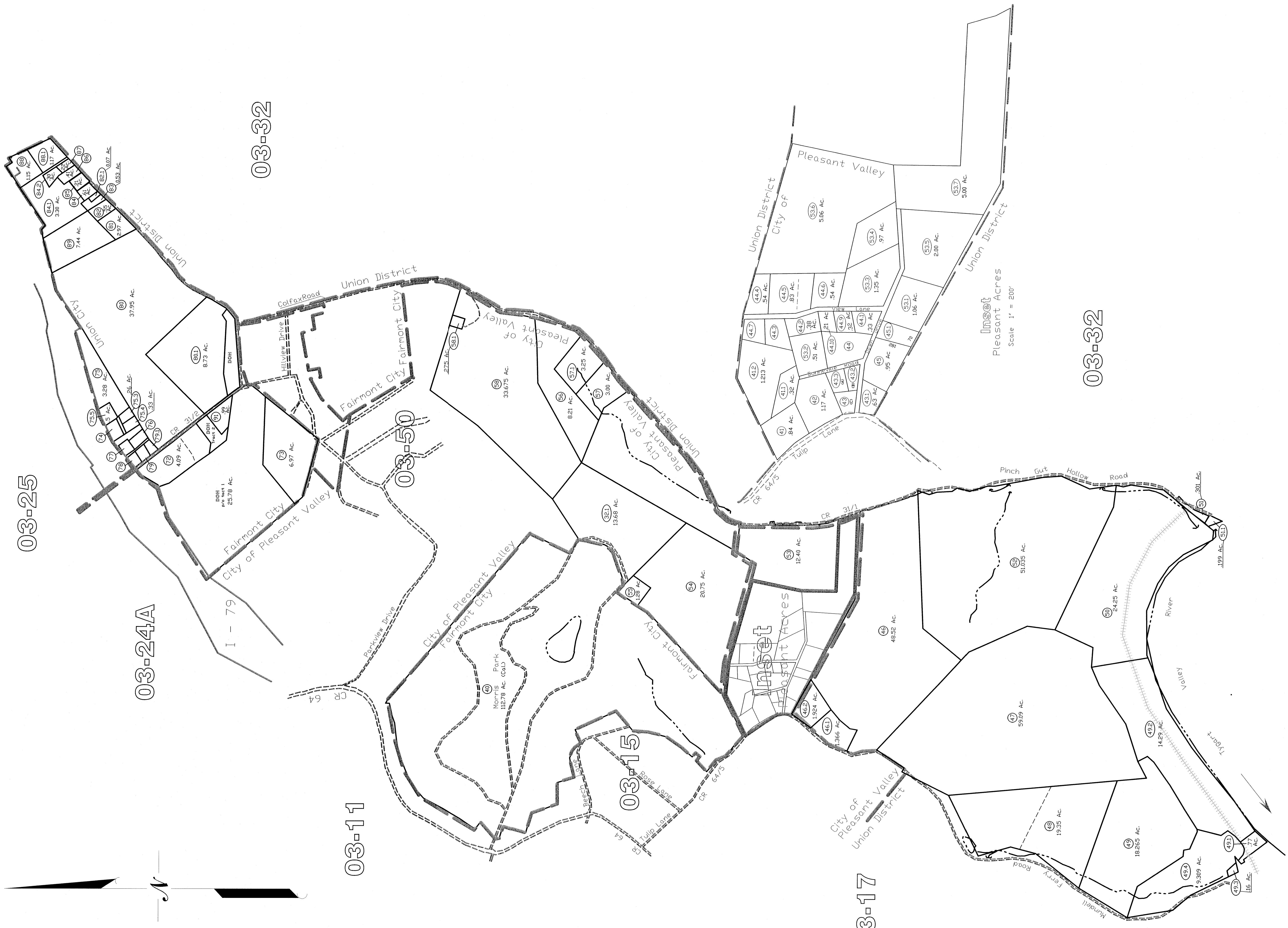
03-11

03-50

03-15

03-17

03-32



Union District
03-24

All tax maps created under the provisions of reorganized legislation are the property of the Marion County Assessor's Office. The existence of state tax liens, and the Marion County Assessor's Office assume no liability that might result from use of this document.

LEGEND

Property Line	-----
Edge of roadway	-----
District Line	-----
Hydrography	-----
Original Lot Line	-----
Lot number	-----
Tax Parcel Number	-----
Railroad	-----

Office of the Marion County Assessor
James P. Pruesler, Assessor

Revision	History
1	NEW MAP TN MARCH, 2002
2	NEW MAP TN NOVEMBER, 2003
3	NEW MAP TN JUNE, 2004
4	NEW MAP VMS SEPTEMBER, 2005

Union District
03-24

