

04-11

04-10

03-28

03-37

03-03

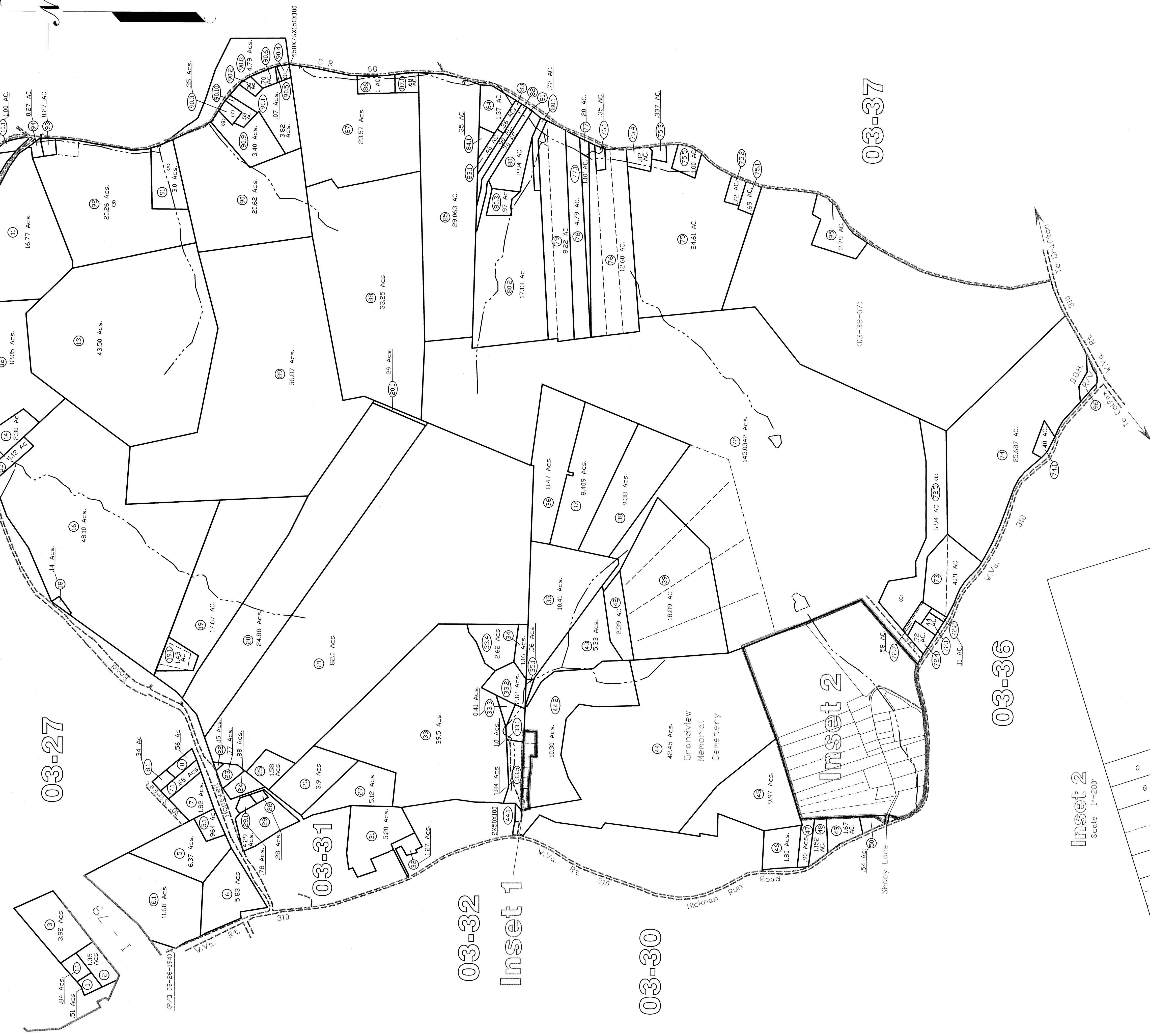
03-27

03-31

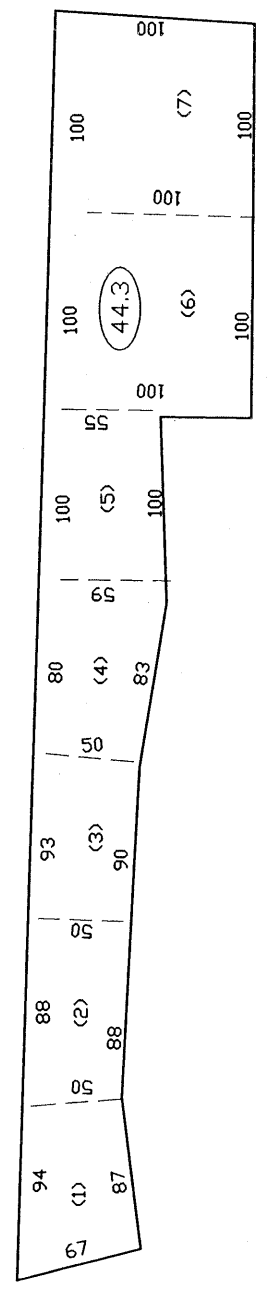
03-32

03-30

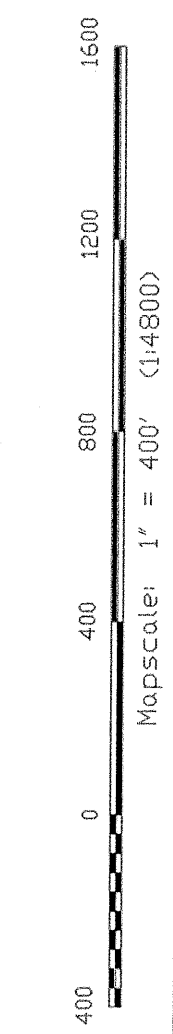
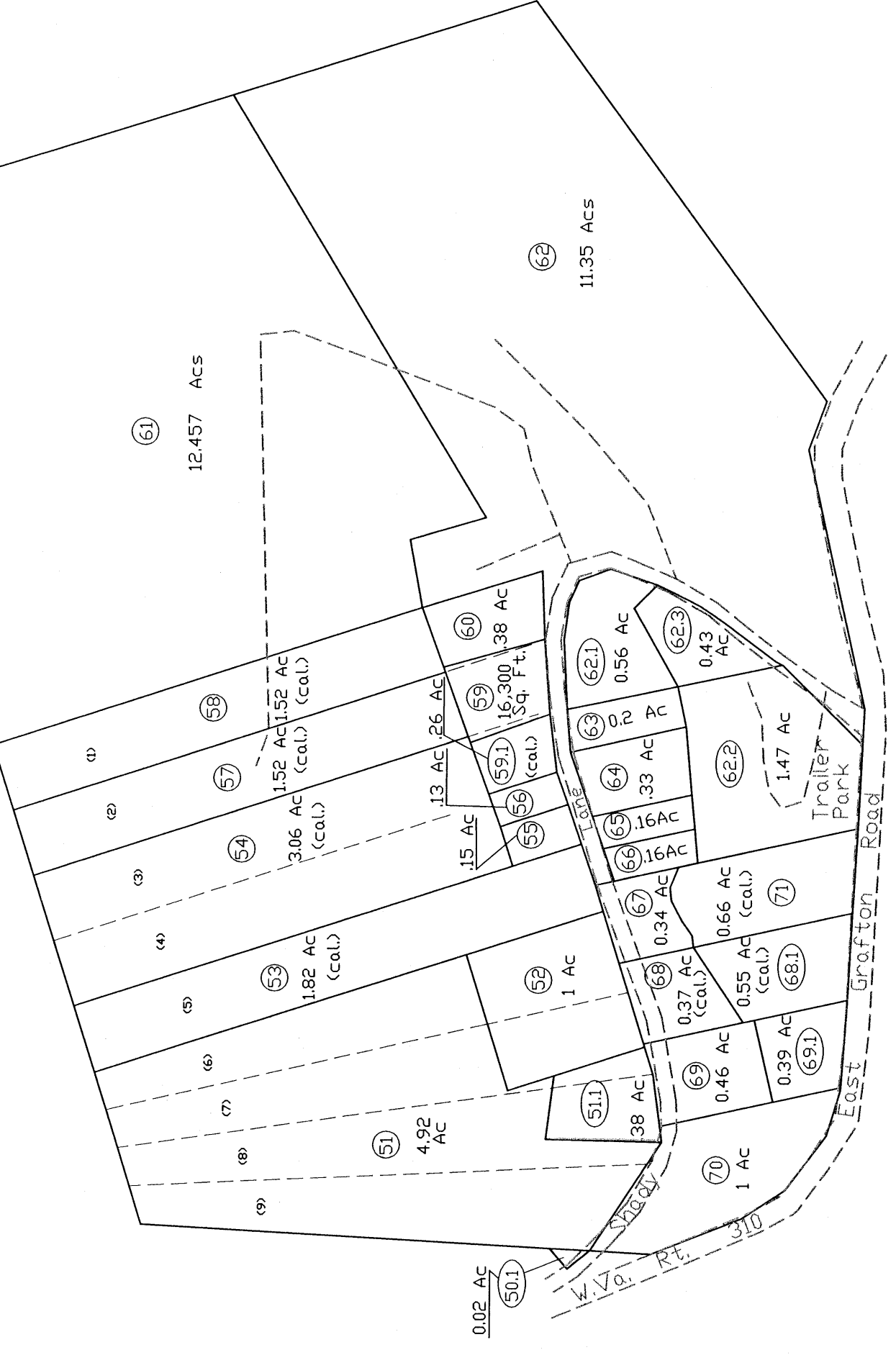
03-36



**Inset 1**  
Scale 1" = 100'  
Gwynn Trailer Lots  
1.7 Ac. Pct. 44.2



**Inset 2**  
Scale 1" = 200'



Mapscale: 1" = 400' (1:4800)

**Union District**  
03-29

**LEGEND**

Property Line	-----
Edge of roadway	-----
Corporation Line	-----
Hydrography	-----
Original Lot Line	-----
Lot number	①
Tax Parcel Number	⑦
Railroad	-----

REVISION	DATE	HISTORY
1	MARCH, 2002	Mapper
2	NOVEMBER, 2003	NEW MAP TN
3	JANUARY, 2004	NEW MAP TN
4	JULY, 2004	NEW MAP VMS
5	SEPTEMBER, 2005	NEW MAP VMS

**Office of the**  
**Marion County Assessor**  
*James P. Proctor, Assessor*

**Union District**  
**03-29**

THIS DOCUMENT IS A TAX MAP. It was compiled for purposes of taxation from available public records. It is not a survey. The existence of data on this map does not imply any official endorsement or approval by the Marion County Assessor's Office. The Assessor's Office assumes no liability for any errors or omissions that may appear hereon.

All tax maps created under the provisions of reappropriation legislation are the property of the Marion County Assessor's Office. No part of this map may be reproduced, distributed, or sold in any form without the written permission of the Marion County Assessor's Office.