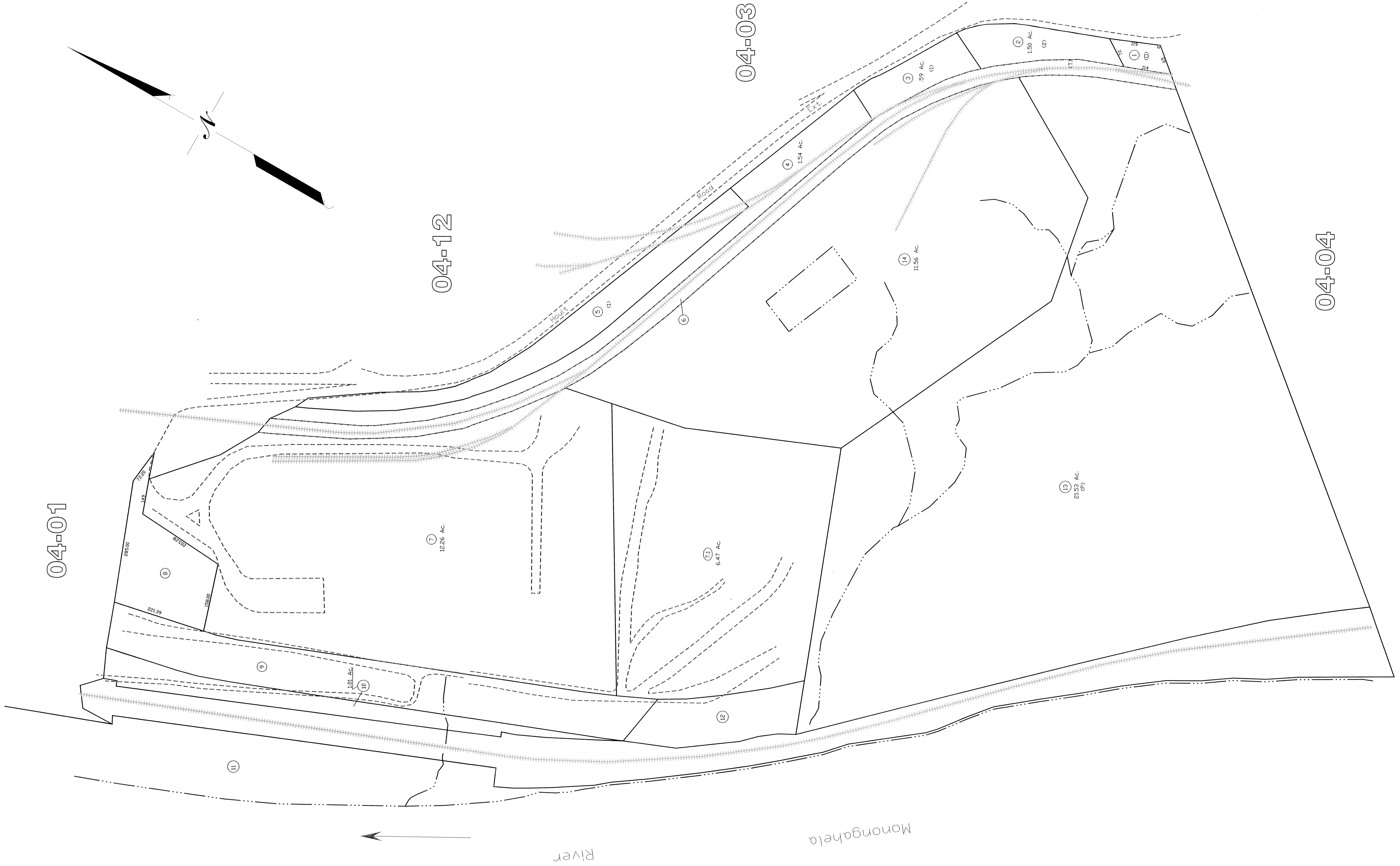


04-01

04-12

04-03

04-04



All tax maps created under the provisions of taxation from legislation are the property of the Marion County Assessor's Office. The existence of data on this map does not imply any "official" status to such data. The WV State Tax Dept. and the Marion County Assessor's Office assume no liability that might result from use of this document.

Map Scale: 1" = 100' (1:1200)

LEGEND

- Property Line
- Edge of roadway
- Corporation Line
- Hydrography
- Original Lot Line
- Lot number
- Tax Parcel Number
- Railroad

Office of the
Marion County Assessor
James P. Proctor, Assessor

Revision	Mapper	Date	History
1	NEW MAP TN	MARCH, 2002	
2	NEW MAP NLK	SEPTEMBER, 2005	
3			
4			
5			

Winfield City
04-02

Winfield City
04-02