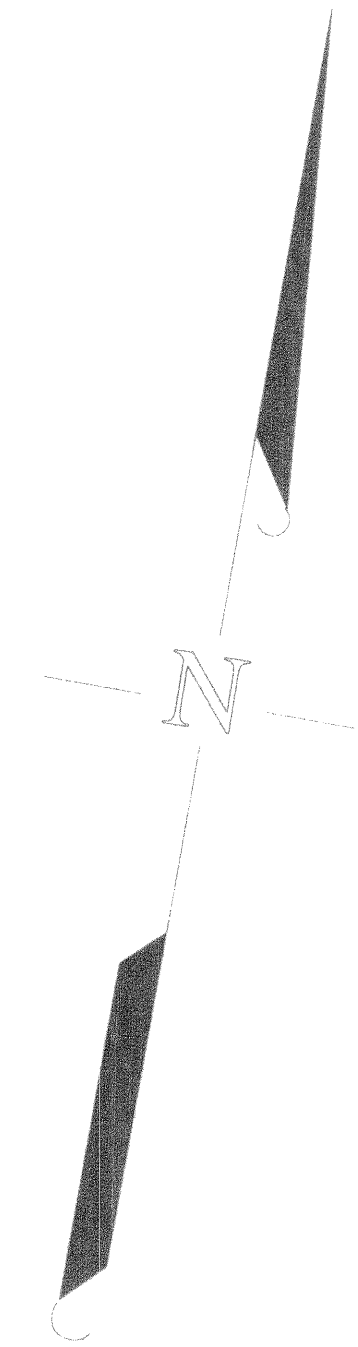


04-04



Monongahela River

1
0.294 Ac

2.1
1.452 Ac

30
27.94 Ac

98
2.876 Ac

94
5.59 Ac

97.1
3.52 Ac

2
2.05 Ac

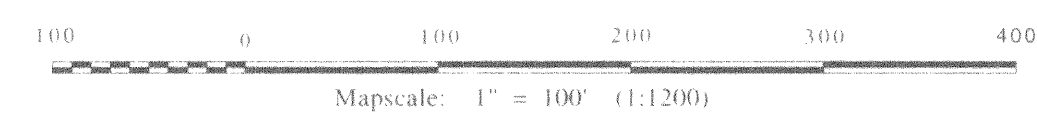
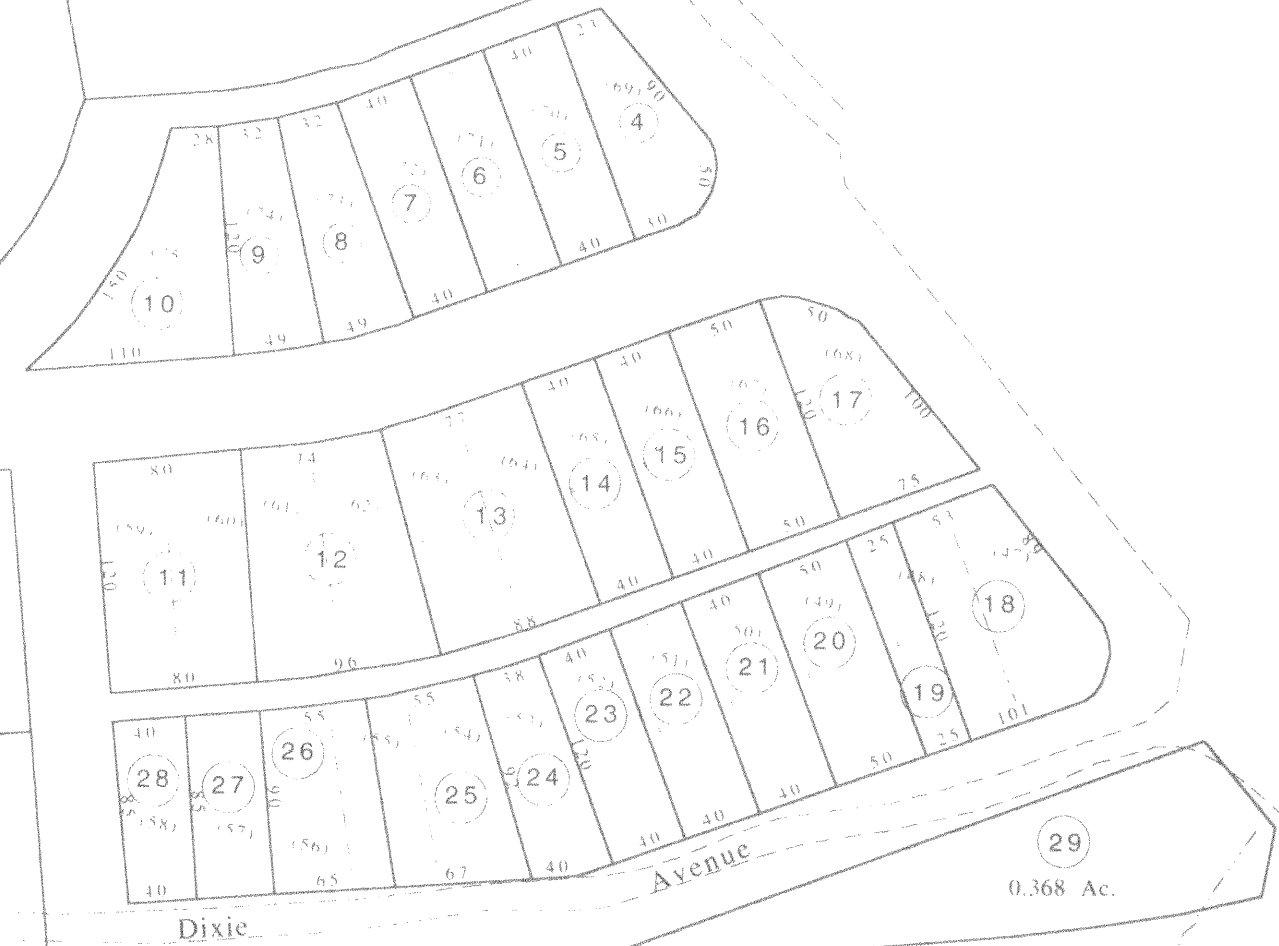
97

04-06

30.2
2.634 Ac

30.1
15 Ac
City Housing Authority

04-09



LEGEND

Property Line	-----	Original Lot Line	-----
Edge of roadway	-----	Lot Number	(8)
Corporation Line	-----	Tax Parcel Number	52
Hydrography	-----	Railroad	-----

Office of the
Marion County Assessor
James P. Priester, Assessor

Revision	History	Date
1	NEW MAP	NK Jan. 99
2	Revised	GQ Dec. 00
3		
4		
5		

All tax maps created under the provisions of reappraisal legislation are the property of the Marion County Reappraisal Program and the reproduction, copying, distribution or sale of such maps or any copies thereof without the written permission of the Marion County Assessor is prohibited by law.

Winfield City
04-05

THIS DOCUMENT IS A TAX MAP. It was compiled for purposes of taxation from available record evidence and has not been field verified. It is not a valid survey plat. The existence of data on this map does not imply any "official" status to such data. The W.V. State Tax Dept. and the Marion County Assessor's Office assume no liability that might result from use of this document.