

Match Line
A-A

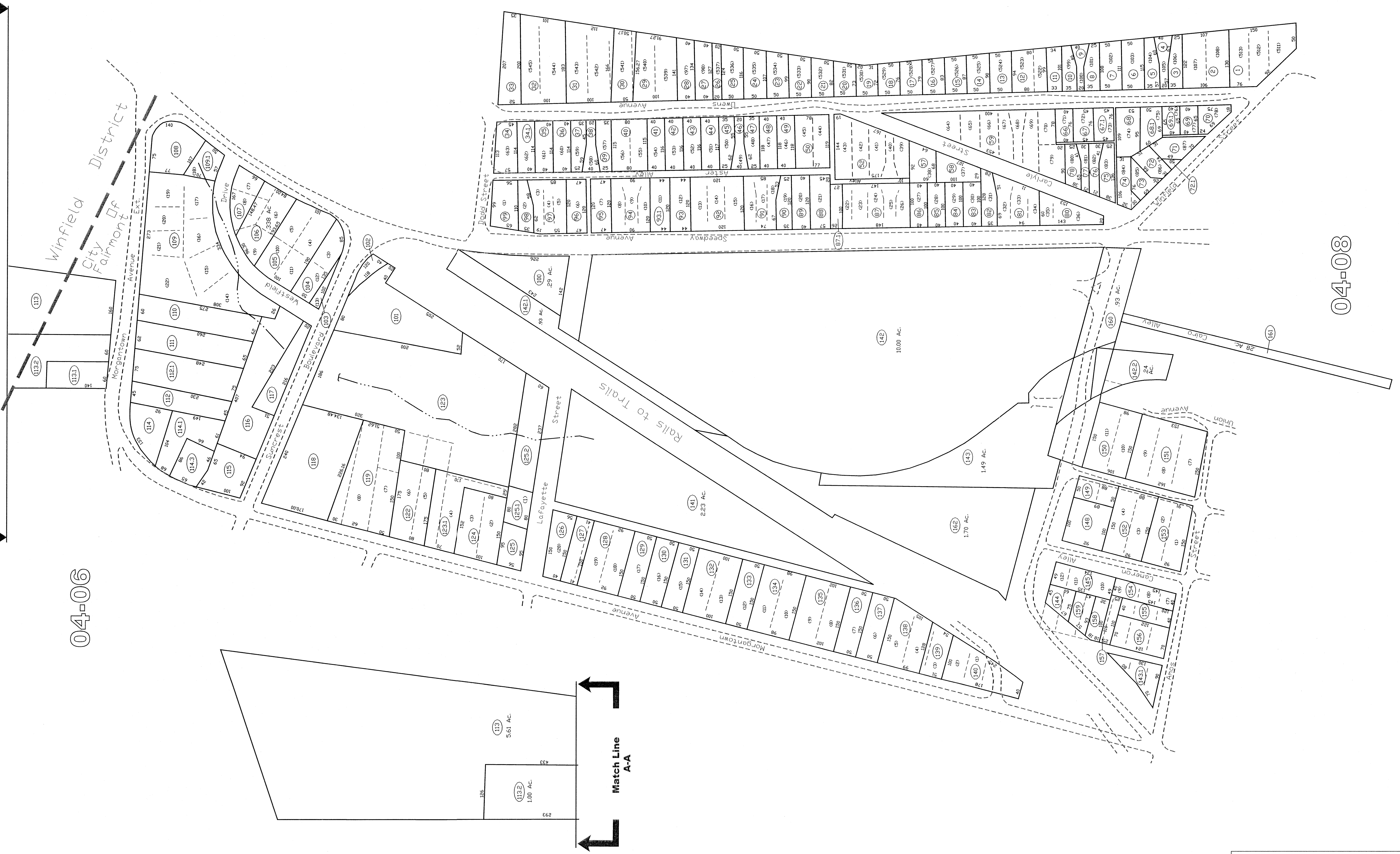
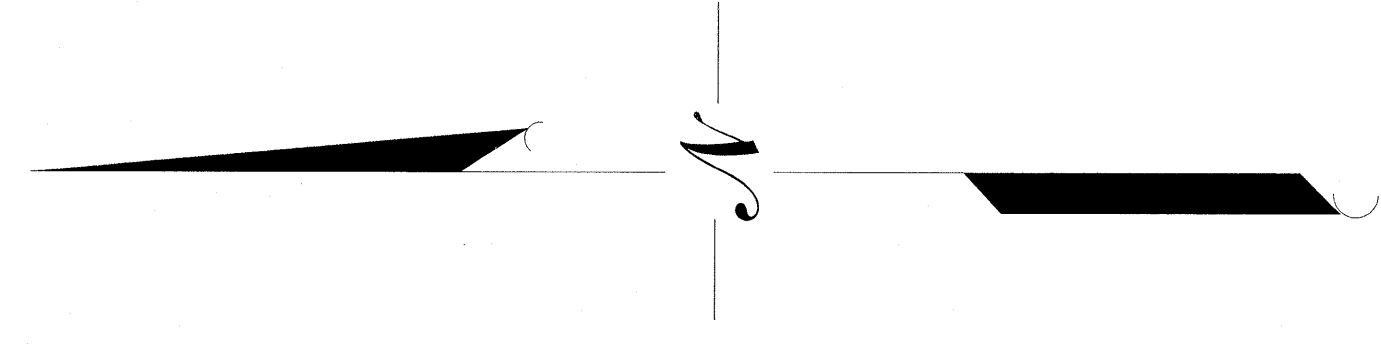
Match Line
A-A

04-06

04-11

04-08

Match Line
A-A



Winfield City
04-07

All tax maps created under the provisions of reauthorized legislation are the property of the Marion County Assessor's Office. The existence of data on this map does not imply any "official" status to such data. The WV State Tax Dept. and the Marion County Assessor's Office assume no liability and might result from use of this document. Assessor is prohibited by law, 20-14.

THIS DOCUMENT IS A TAX MAP. It was compiled for purposes of taxation from survey plat. The existence of data on this map does not imply any "official" status to such data. The WV State Tax Dept. and the Marion County Assessor's Office assume no liability and might result from use of this document.

LEGEND

- Property Line
- Edge of roadway
- Corporation Line
- Hydrography
- Original Lot Line
- Lot number
- Tax Parcel Number
- Railroad

**Office of the
Marion County Assessor**
Fernando P. Pridem, Assessor

Revision	Date	History
1	MARCH, 2002	MAPPER
2	MARCH, 2004	NEW MAP
3	SEPTEMBER, 2005	NEW MAP

Scale: 1" = 100' (1:1200)

