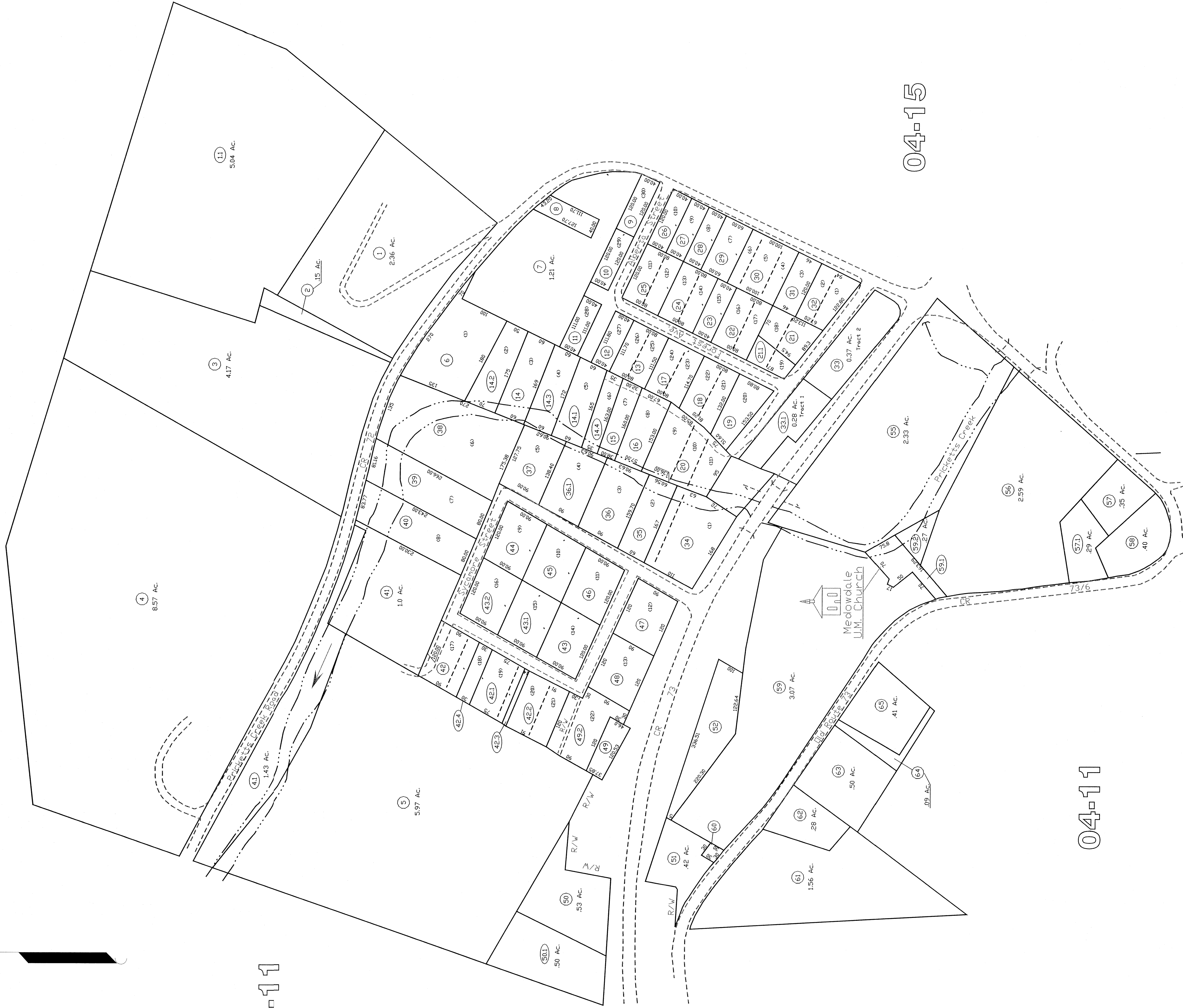




04-13



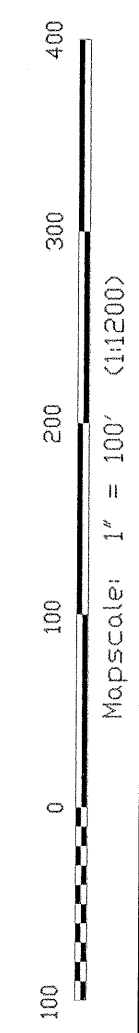
04-11

04-15

04-11

All tax maps created under the provisions of reprobated legislation are the property of the Marion County Assessor's Office. The existence of date on this map does not imply any "official" distribution or sale of such maps or any copies thereof without the written permission of the Marion County Assessor's Office, 200 S. 1st St., Marion, IN 46850.

THIS DOCUMENT IS A TAX MAP. It was compiled for purposes of taxation from available records and is not a survey. The existence of date on this map does not imply any "official" distribution or sale of such maps or any copies thereof without the written permission of the Marion County Assessor's Office, 200 S. 1st St., Marion, IN 46850.



**LEGEND**

Property Line	Original Lot Line
Corporation Line	Lot Parcel Number
Hydrography	

**Office of the  
Marion County Assessor**  
*James P. Prosser, Assessor*

REVISION	History	Date
1	NEW MAP	MARCH, 2002
2	NEW MAP	JULY, 2004
3	NEW MAP	SEPTEMBER, 2005

**Winfield District**  
04-14

**Winfield District**  
04-14