

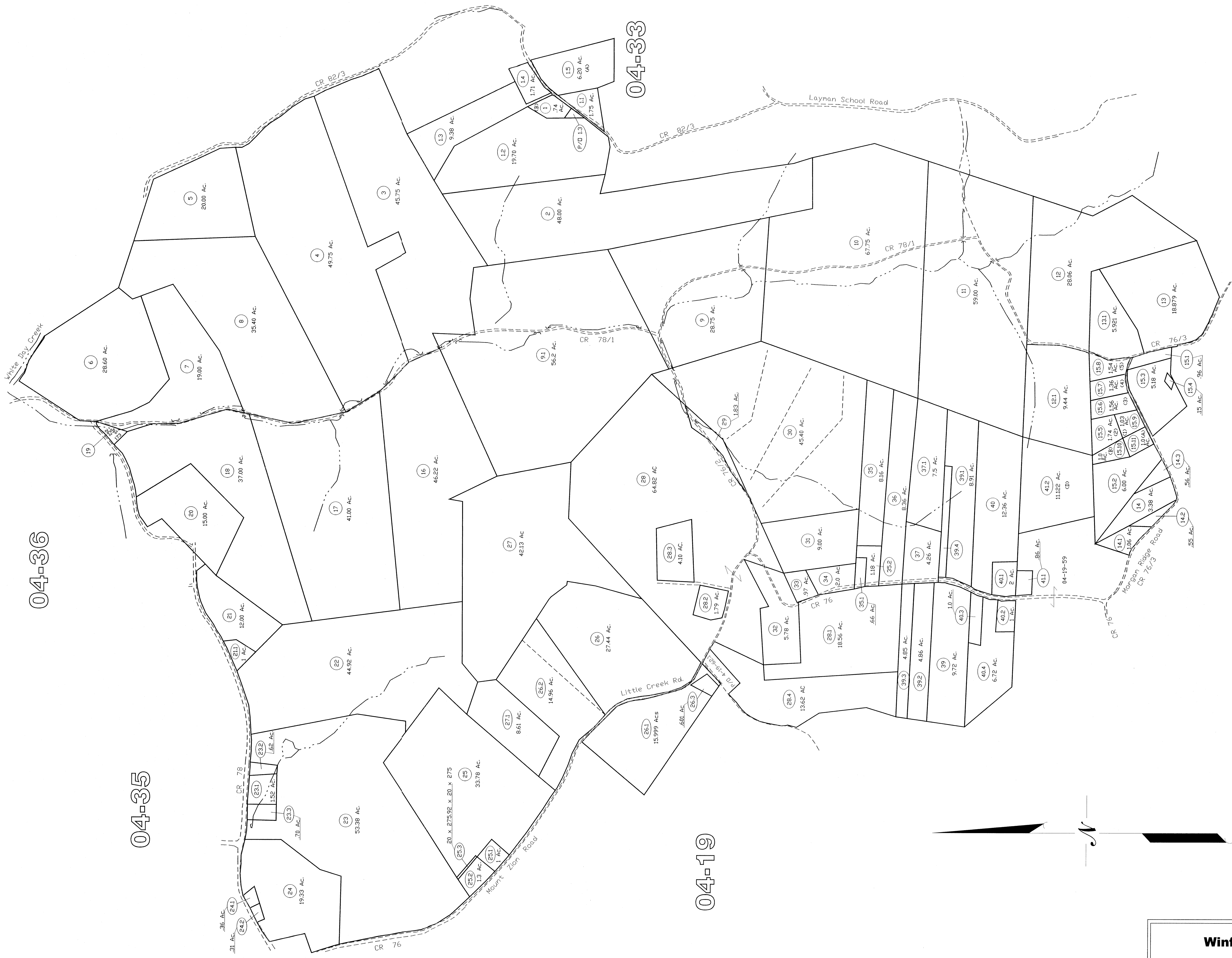
04-36

04-35

04-33

04-19

04-32



All tax maps created under the provisions of proposed legislation are the property of the Marion County Assessor's Office. No part of this map may be reproduced, stored in a retrieval system, or transmitted in any form or by any means, electronic, mechanical, photocopying, recording, or by any information storage and retrieval system, without the written permission of the Marion County Assessor. It is prohibited by law. 03-14

THIS DOCUMENT IS A TAX MAP. It was compiled for purposes of taxation from available records and has not been field verified. It is not a "valid" document for legal purposes. The NW State Tax Dept. and the Marion County Assessor's Office assume no liability that might result from use of this document.

LEGEND

Property Line	Original Lot Line
Edge of roadway	Lot number
Corporation Line	Tax Parcel Number
Hydrography	

**Office of the Marion County Assessor**  
James P. Priddy, Assessor

REVISION	DATE	HISTORY
1	NEW MAP	MARCH, 2002
2	NEW MAP	JULY, 2004
3	NEW MAP	SEPTEMBER, 2005
4		
5		

**Winfield District**  
04-34

**Winfield District**  
04-34

