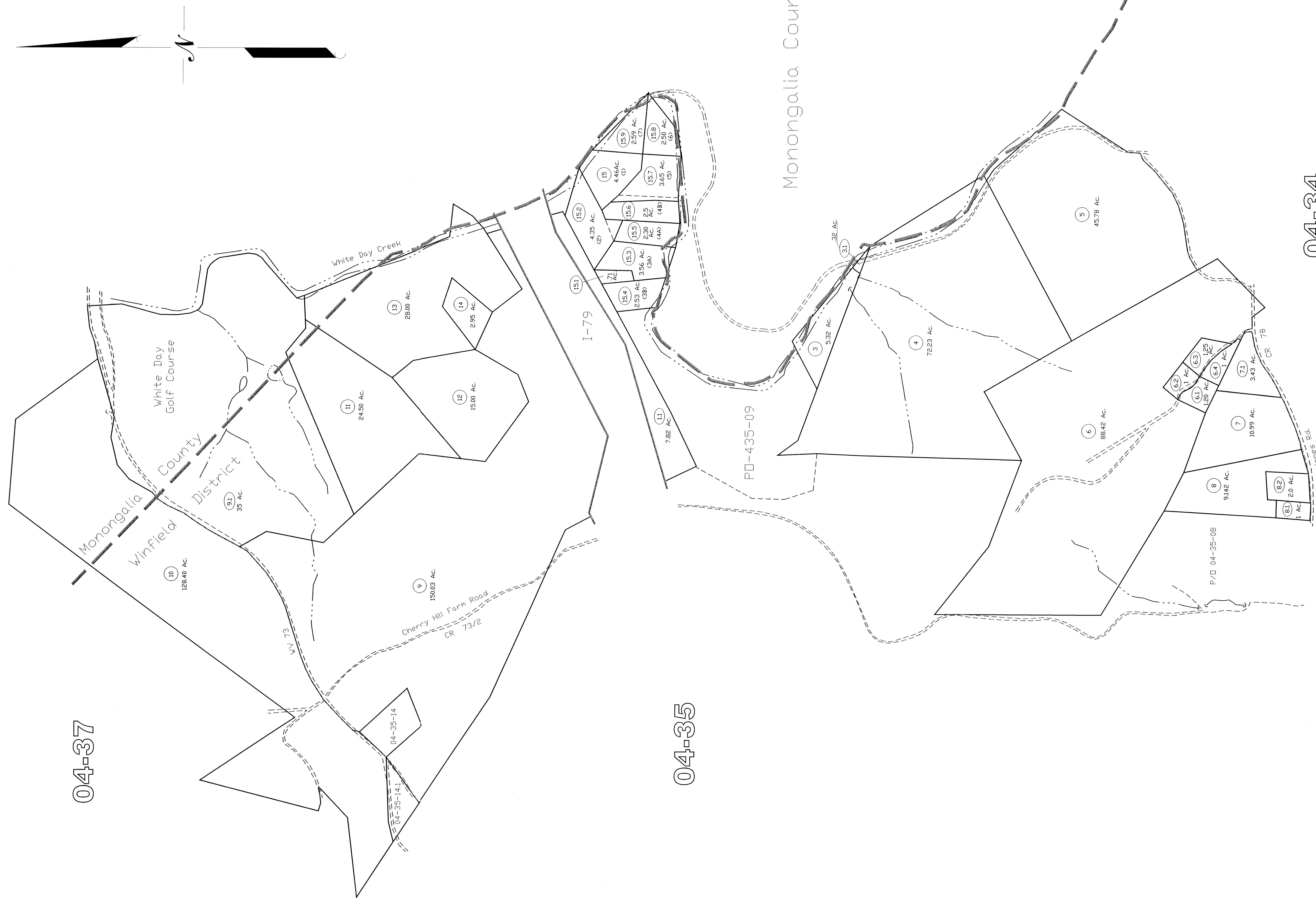


04-37



04-34

04-35

Winfield District
04-36

All the maps created under the provisions of reprinted legislation are subject to the provisions of the Reappraisal Program and the reproduction, copying, or distribution of such maps without the written permission of the Marion County Assessor is prohibited by law. 03-14

THIS DOCUMENT IS A TAX MAP. It was compiled for purposes of taxation from available record evidence and has not been field verified. It is not a "valid" statement of fact. The WV State Tax Dept. and the Marion County Assessor's Office assume no liability that might result from use of this document.

LEGEND

- Property Line
- Edge of roadway
- County line
- Hydrography
- Original Lot Line
- Lot number
- Tax Parcel Number

Scale: 1" = 400' (1:1600)



Office of the Marion County Assessor
James P. Priddy, Assessor

Revision	Mapper	History
1	NEW MAP	MARCH, 2002
2	NEW MAP	NOVEMBER, 2003
3	NEW MAP	SEPTEMBER, 2005
4		
5		

Winfield District
04-36