

04-11

04-10

03-28

03-27

03-03

1-79

03-31

03-32

Inset 1

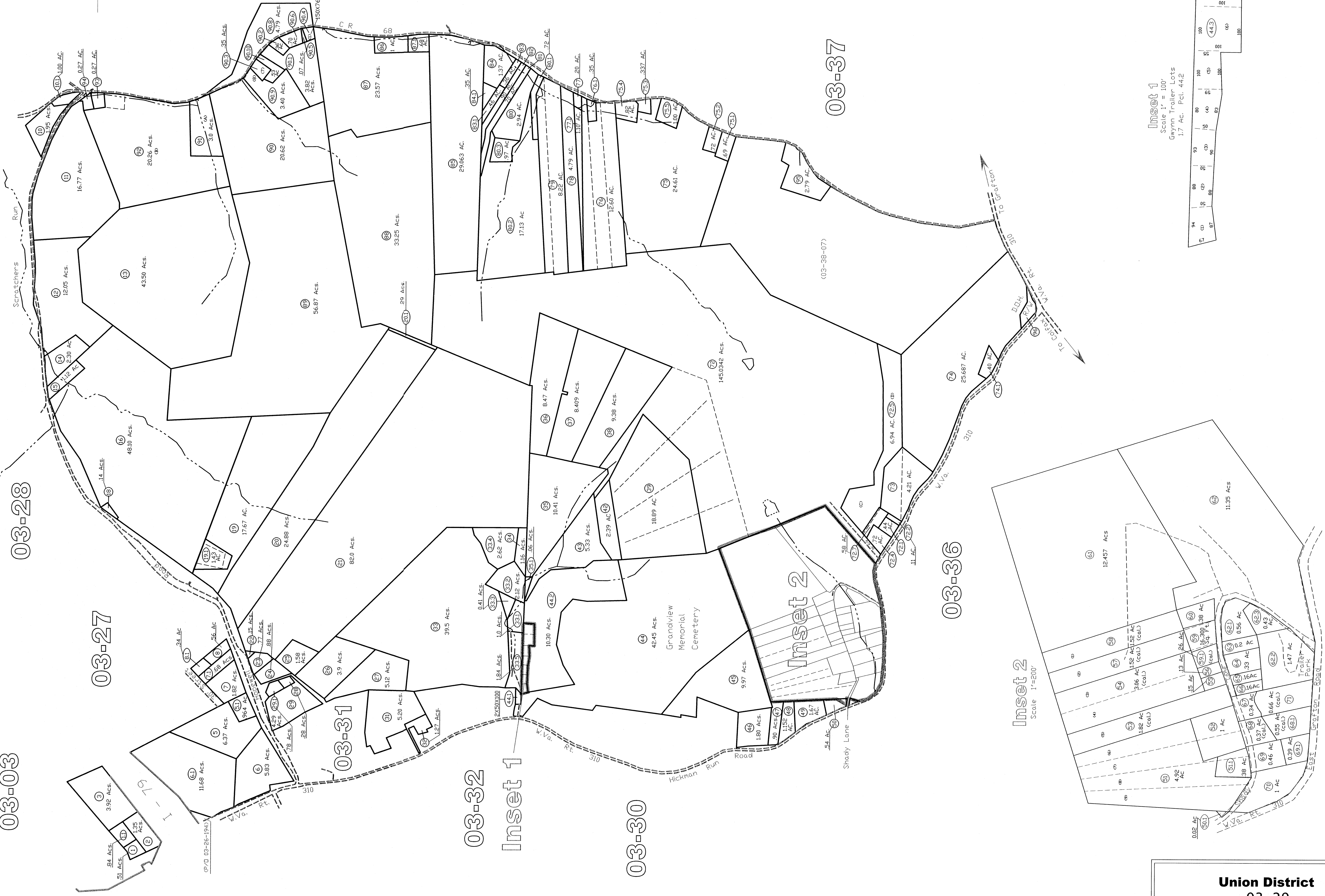
03-30

Inset 2

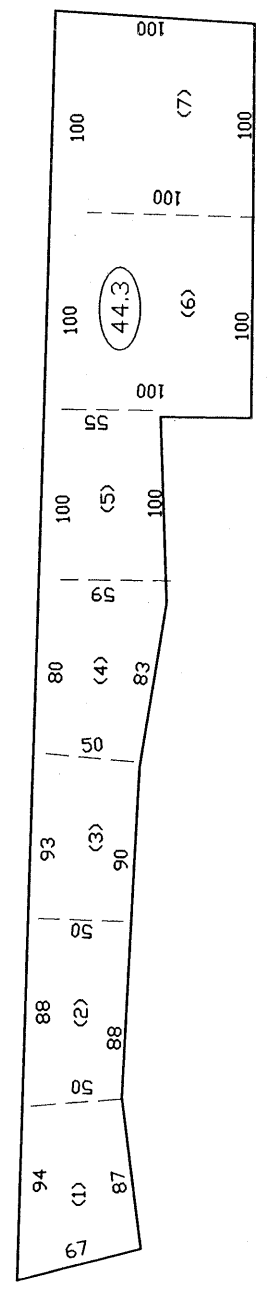
03-36

(03-38-07)

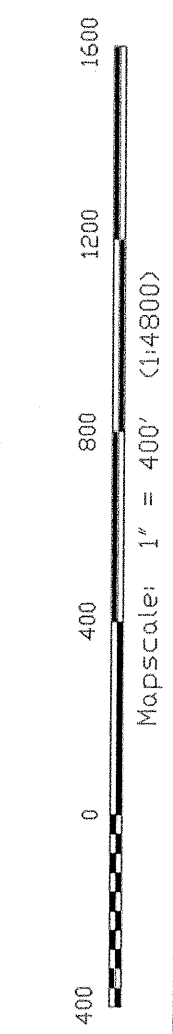
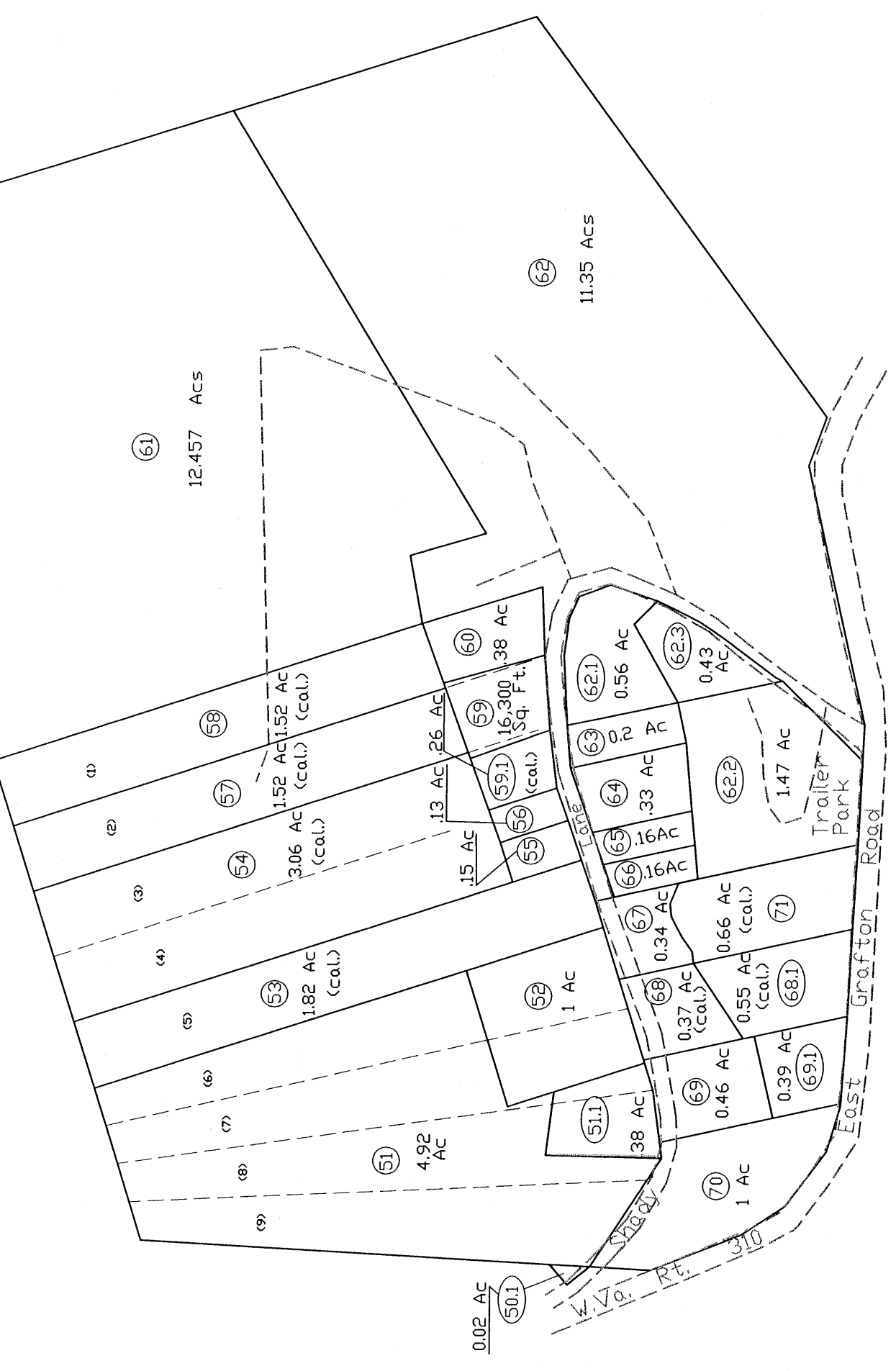
03-37



Inset 1
Scale 1" = 100'
Gwynn Trailer Lots
1.7 Ac. Pct. 44.2



Inset 2
Scale 1" = 200'



Mapscale: 1" = 400' (1:4800)

Union District
03-29

All tax maps created under the provisions of reappropriation legislation are the property of the Marion County Assessor's Office. The existence of data on this map does not imply any official distribution or sale of such maps or any copies thereof without the written permission of the Marion County Assessor's Office.

LEGEND

Property Line	-----
Edge of roadway	-----
Corporation Line	-----
Hydrography	-----
Original Lot Line	-----
Lot number	①
Tax Parcel Number	⑦
Railroad	-----

Office of the
Marion County Assessor
James P. Proctor, Assessor

REVISION	DATE	HISTORY
1	MARCH, 2002	Mapper
2	NOVEMBER, 2003	NEW MAP TN
3	JANUARY, 2004	NEW MAP TN
4	JULY, 2004	NEW MAP VMS
5	SEPTEMBER, 2005	NEW MAP VMS

Union District
03-29