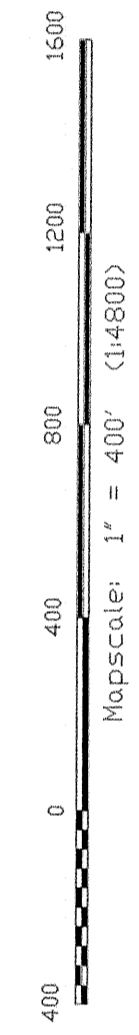
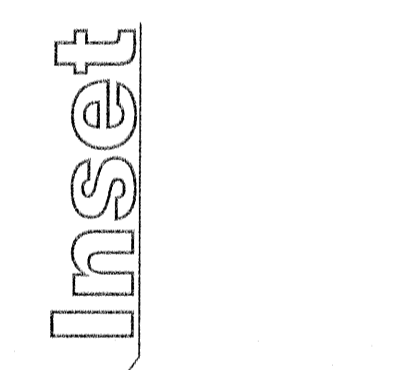
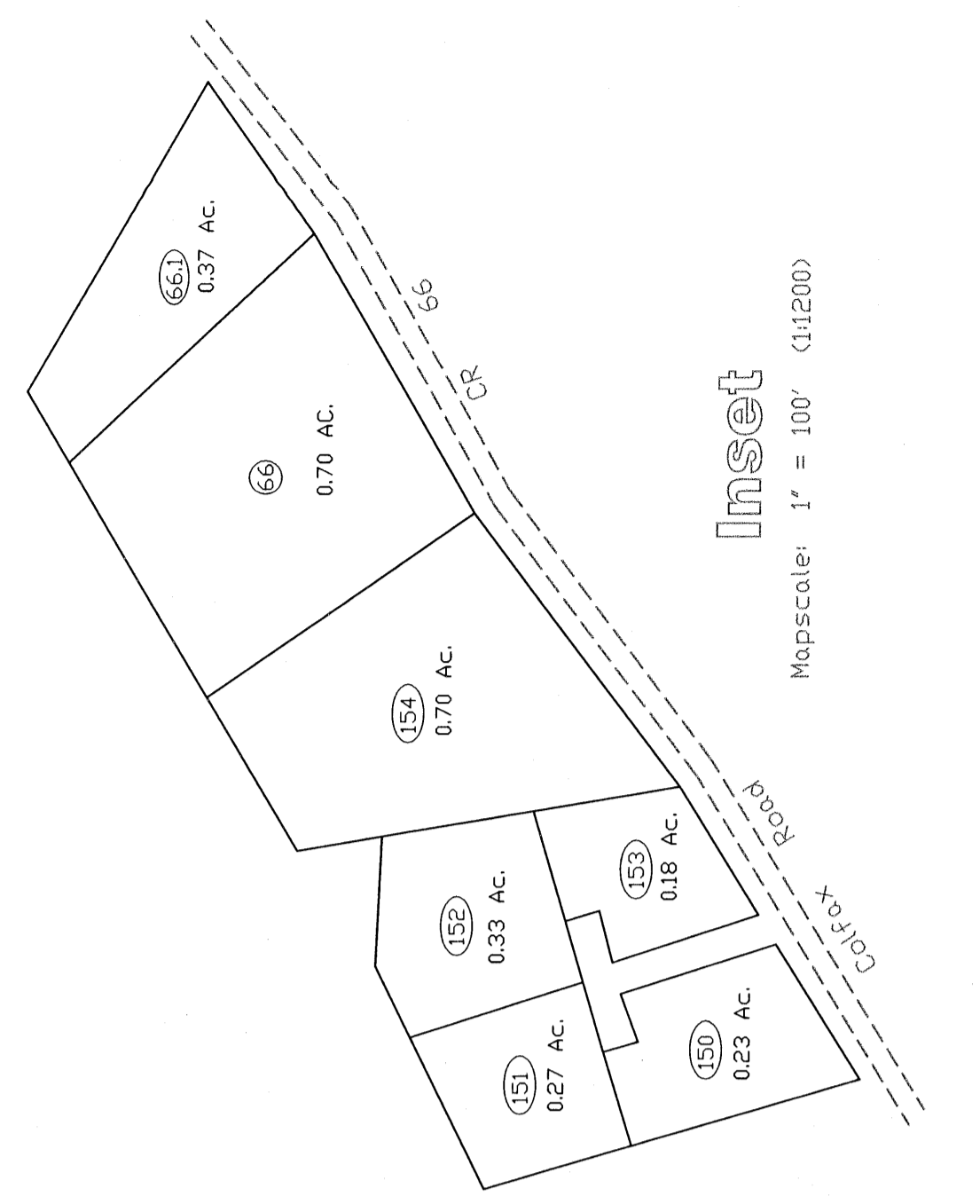


**Union District
03-32**



LEGEND

Property Line	Original Lot Line
Edge of roadway	Lot number
Corporation Line	Tax Parcel Number
Hydrography	Railroad

THIS DOCUMENT IS A TAX MAP. It was compiled for purposes of taxation from the original plat. The existence of data on this map does not imply any official status to such data. The WV State Tax Dept. and the Marion County Assessor's Office assume no liability that might result from use of this document.

**Office of the
Marion County Assessor**
James P. Prudden, Assessor

**Union District
03-32**

NO.	REVISION	DATE	HISTORY
1	NEW MAP	MARCH, 2002	
2	NEW MAP	DECEMBER, 2003	
3	NEW MAP	JUNE, 2004	
4	NEW MAP	SEPTEMBER, 2005	

All tax maps created under the provisions of reauthorized legislation are the property of the Marion County Assessor's Office. The reproduction, copying, distribution or use of any part of this map without the written permission of the Marion County Assessor is prohibited by law. 03-14