

01-07

02-02

03-13

03-12

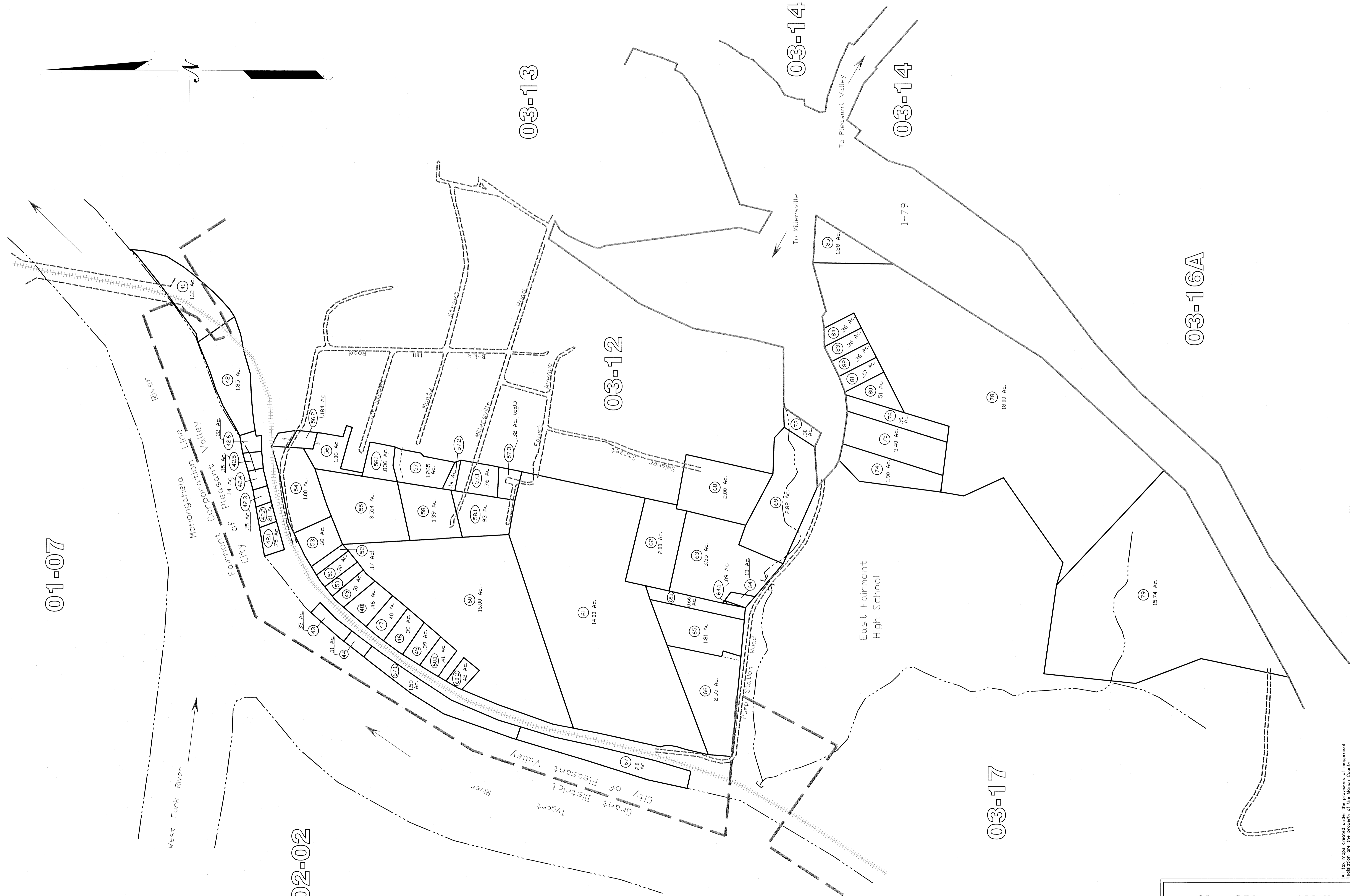
03-14

03-14

03-17

03-16A

City of Pleasant Valley
03-11A



All tax maps created under the provisions of reopertional legislation are the property of the Marion County Assessor's Office. The existence of data on this map does not imply any "official" status to such data. The WV State Tax Dept. and the Marion County Assessor's Office assume no liability that might result from use of this document.

Scale: 1" = 200' (1:2400)

LEGEND

- Property Line
- Edge of roadway
- Corporation Line
- Hydrography
- Original Lot Line
- Lot number
- Tax Parcel Number
- Railroad

Office of the
Marion County Assessor
James P. Priesler, Assessor

Revision	History
1	NEW MAP TN MARCH, 2002
2	NEW MAP VMS SEPTEMBER, 2005
3	
4	

City of Pleasant Valley
03-11A